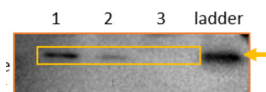


Product no **AS22 4864****Anti-L32 | 50S ribosomal protein L32 (chloroplastic)****Product information**

Immunogen	KLH-conjugated peptide derived from <i>Arabidopsis thaliana</i> L32 protein sequence, UniProt: P61847 and P12198 TAIR: ATCG01020
Host	Rabbit
Clonality	Polyclonal
Purity	Antigen affinity purified serum, in PBS pH 7.4
Format	Lyophilized
Quantity	50 µg
Reconstitution	For reconstitution add 50 µl, of sterile or deionized water.
Storage	Store lyophilized/reconstituted at -20°C; once reconstituted make aliquots to avoid repeated freeze-thaw cycles. Please, remember to spin tubes briefly prior to opening them to avoid any losses that might occur from lyophilized material adhering to the cap or sides of the tubes.

Application information

Recommended dilution	1 : 1000 (WB)
Expected apparent MW	6 kDa
Confirmed reactivity	<i>Arabidopsis thaliana</i> , <i>Nicotiana tabacum</i>
Predicted reactivity	<i>Brassica napus</i> , <i>Pisum sativum</i> , <i>Solanum lycopersicum</i> , <i>Solanum tuberosum</i> Species of your interest not listed? Contact us
Not reactive in	No confirmed exceptions from predicted reactivity are currently known
Selected references	To be added when available, antibody available in June 2024.

**Samples:**

- 1 - 10 µg of *Nicotiana tabacum* wild-type whole leaf extract
 - 2 - 10 µg of *Nicotiana tabacum* Rpl32 over-expresser whole leaf extract, contain native chloroplast Rpl32 (6.3 kDa) and fusion protein Rpl32-YFP (33.2 kDa)
 - 3 - 10 µg of *Nicotiana tabacum* wild-type root extract, used as negative control that does not contain chloroplast proteins
- ladder: MW markers

Tobacco leaf and root protein was extracted freshly from *Nicotiana tabacum* (Exaction buffer components were: 0.7 M sucrose, 0.5 M Tris, 50 mM EDTA, 0.1 M KCL, 2% -Mercaptoethanol, 2% Complete proteases inhibitor), mixed thoroughly and then added same volume of Phenol, precipitated in 0.1 M NH₄OAc in Methanol, and resuspended in 10% SDS. Then denatured with 1 vol of 2x protein loading buffer (125 mM Tris-HCl (pH 6.8), 4% SDS, 20% glycerol, 25 mM EDTA, 0.4 mg/ml Bromophenol blue, 2% -Mercaptoethanol at 64°C/10 min. 10 µg/well of protein samples were separated in the cold on 12% SDS-PAGE and blotted for 20 V/overnight to nitrocellulose (pore size of 0.2 µm), using: wet transfer in the cold. Blot was blocked with 4 % milk for 1h/RT with agitation. Blot was incubated in the primary antibody at a dilution of 1 : 1000 for ON/4°C with agitation in TBS-T. The antibody solution was decanted, and the blot was rinsed briefly twice, then washed 3 times for 10 min in TBS-T at RT with agitation. Blot was incubated in matching secondary antibody (Agrisera anti-rabbit IgG horse radish peroxidase conjugated) diluted to 1: 10000 in TBS-T for 1h/RT with agitation. The blot was washed as above and developed with a following chemiluminescent detection reagents. Exposure time was 30 seconds.

Courtesy of phd student. Jinghan Liu and Dr. Reimo Zoschke, Max Planck Institute, Germany