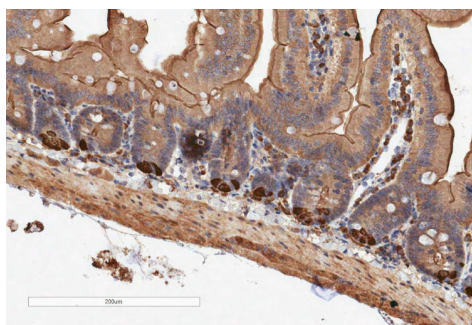


Product no AS24 5006**Anti-RFP | Red fluorescent protein (mRFP, mCherry, tdTomato, mScarlet)****Product information**

Immunogen	Recombinant protein produced in <i>E.coli</i> corresponding to full length mRFP. The sequence used for immunization is also found in other red fluorescent proteins like: mCherry/tdTomato/mScarlet and others.
Host	Rabbit
Clonality	Polyclonal
Purity	Antigen affinity purified serum, in PBS pH 7.4
Format	Lyophilized
Quantity	50 µg
Reconstitution	For reconstitution, add 50 µl, of sterile or deionized water.
Storage	Store lyophilized/reconstituted at -20°C; once reconstituted make aliquots to avoid repeated freeze-thaw cycles. Please, remember to spin tubes briefly prior to opening them to avoid any losses that might occur from lyophilized material adhering to the cap or sides of the tubes.

Application information

Recommended dilution	1: 200 (IHC)
Expected apparent MW	Depends upon fusion partner
Confirmed reactivity	RFP
Predicted reactivity	mRFP, mCherry, tdTomato, mScarlet
Not reactive in	No confirmed exceptions from predicted reactivity are currently known
Selected references	To be added when available. Antibody released in February 2025.



Type of material: Mouse intestinal tissue (FFPE tissue), overexpressing mScarlet tagged protein

Fixation: formaldehyde

Hydrophilization: n/a

Cell wall digestion: n/a

Membrane permeabilization: n/a

Antigen retrieval: in citrate buffer

Blocking buffer: Superblock plus (Thermoscientific 37580) Washing buffer: PBS

Primary antibody dilution and incubation time: 1:200/ 1 h incubation

Secondary antibody: Vector labs, BA-1000-Goat Anti-Rabbit IgG Antibody (H+L), Biotinylated 1:200

Co-staining of the nucleus: Haematoxylin

Courtesy of Dr. Hayley Belnoue-Davis, Centre for Human Genetics, University of Oxford, United Kingdom