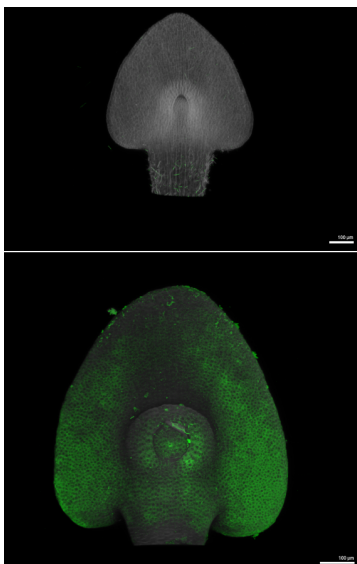


Product no **AS22 4801****Anti-PIN1 | Auxin efflux carrier component 1 (monocots)****Product information**

Immunogen	KLH-conjugated peptide derived from <i>Zea mays</i> PIN1, UniProt: Q0MWY2
Host	Rabbit
Clonality	Polyclonal
Purity	Antigen affinity purified serum, in PBS pH 7.4
Format	Lyophilized
Quantity	50 µg
Reconstitution	For reconstitution, add 50 µl of sterile or deionized water.
Storage	Store lyophilized/reconstituted at -20°C; once reconstituted make aliquots to avoid repeated freeze-thaw cycles. Please, remember to spin tubes briefly prior to opening them to avoid any losses that might occur from lyophilized material adhering to the cap or sides of the tubes.

Application information

Recommended dilution	1 : 50 (IF)
Expected apparent MW	65.194 kDa (due to N-terminal or C-terminal processing)
Confirmed reactivity	<i>Zea mays</i>
Predicted reactivity	<i>Oryza sativa</i>
	Species of your interest not listed? Contact us
Not reactive in	No confirmed exceptions from predicted reactivity are currently known
Selected references	To be added when available, antibody available in August 2024.



Type of material: Maize coleoptile stage embryos
 Fixation: formaldehyde | Methanol, 37°C. Both FFA and Methanol, sequentially.
 Hydrophilization: yes
 Cell wall digestion: yes
 Membrane permeabilization: Proteinase K incubation
 Antigen retrieval: no
 Blocking buffer: 3% BSA in 1x PBS
 Washing buffer: 1x PBS-T
 Primary antibody dilution and incubation time: 1% BSA in 1x PBS, 1:50, overnight at 4°C.
 Secondary antibody: 1% BSA in 1x PBS, 1:50, overnight at 4°C, Alexa fluor-488 (Anti-Rabbit and -Mouse, Thermo Fisher)

Agrisera

Part of Olink® Group 

This product is **for research use only** (not for diagnostic or therapeutic use)

contact: support@agrisera.com

Agrisera AB | Box 57 | SE-91121 Vännäs | Sweden | +46 (0)935 33 000 | www.agrisera.com

Co-staining of the nucleus (DAPI): no
Cell wall and nucleus staining: Calcofluor white