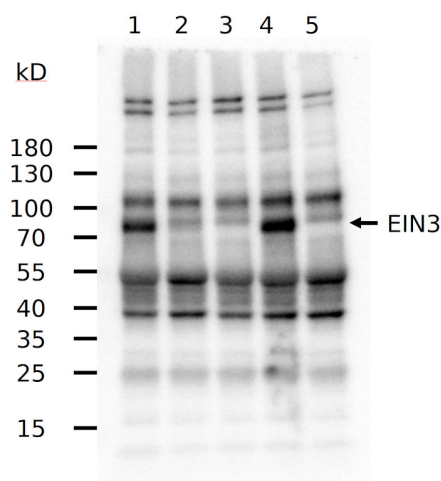


Product no **AS23 4896****Anti-EIN3 | Ethylene insensitive 3 antibodies****Product information**

Immunogen	Part of a recombinant EIN3 protein of <i>Arabidopsis thaliana</i> , UniProt: O24606 , TAIR: AT3G20770
Host	Rabbit
Clonality	Polyclonal
Purity	Antigen affinity purified serum, in PBS pH 7.4
Format	Lyophilized
Quantity	50 µg
Reconstitution	For reconstitution add 50 µl, of sterile or deionized water.
Storage	Store lyophilized/reconstituted at -20°C; once reconstituted make aliquots to avoid repeated freeze-thaw cycles. Please, remember to spin tubes briefly prior to opening them to avoid any losses that might occur from lyophilized material adhering to the cap or sides of the tubes.

Application information

Recommended dilution	1 : 1000 (WB)
Expected apparent MW	78 71.4 kDa (due to N-terminal processing)
Confirmed reactivity	<i>Arabidopsis thaliana</i>
Predicted reactivity	Species of your interest not listed? Contact us
Not reactive in	No confirmed exceptions from predicted reactivity are currently known
Selected references	To be added when available. Antibody released in October 2024.

**Samples:**

MW markers: PageRuler™ from Thermo Scientific™

1. *Arabidopsis thaliana* wild-type Col-0
2. *Arabidopsis thaliana* ein2-1 mutant
3. *Arabidopsis thaliana* ein3-1 mutant
4. *Arabidopsis thaliana* eil1-1 mutant
5. *Arabidopsis thaliana* ein3-1/eil1-1 mutant

Total proteins were extracted freshly from 10-day-old *Arabidopsis thaliana* seedlings with plant protein extraction buffer (50 mM Tris/HCl pH7.5, 150mM NaCl, 1% Triton-X100, 1% sodium deoxycholate, 0.1% SDS, 1 mM EDTA, 1 mM DTT, 1% Thermo Scientific™ Halt™ Protease and Phosphatase Inhibitor Cocktail and 50 µM MG132). Protein concentrations of the samples were determined by Bio-Rad RC/DC™ Protein Assay kit and adjusted to the same concentration. The adjusted samples were 1:1 mixed with 2x SDS sampling buffer (125 mM Tris/HCl pH6.8, 4% SDS, 20% glycerol, 10% β-mercaptoethanol, 0.2 mg/ml bromophenol blue) and denatured at 95 °C for 10 min. 40 µg of proteins per well were separated on Bio-Rad 4–20% Mini-PROTEAN® TGX™ gel and blotted 1h to PVDF (pore size of 0.45 µm) using wet tank transfer. Blot was blocked with 10% no-fat dry milk in TBS for 1h/RT with agitation. Blot was incubated in anti-EIN3 primary antibody (AS23 4896) at a dilution of 1: 1,000 in TBS + 3%

This product is **for research use only** (not for diagnostic or therapeutic use)

contact: support@agrisera.com

Agrisera AB | Box 57 | SE-91121 Vännäs | Sweden | +46 (0)935 33 000 | www.agrisera.com

BSA overnight at 4 °C with agitation. The antibody solution was decanted, and the blot was washed 3 times for 10 min each in 20 ml of TBS-T at RT with agitation. Blot was incubated with Invitrogen™ Goat anti-Rabbit IgG (H+L) HRP-conjugated secondary antibody diluted to 1:10,000 in TBS with 10% non-fat drymilk for 1h/RT with agitation. The blot was washed 4 times for each in 20 ml of TBS-T at RT with agitation and developed for 5 min with chemiluminescent detection reagent of high sensitivity. Exposure time was 15 seconds by using Bio-Rad ChemiDoc system.

Courtesy of Dr. Jian Yao, DOE-Plant Research Laboratory, Michigan State University, USA