

# Plant Cell Compartment marker antibodies

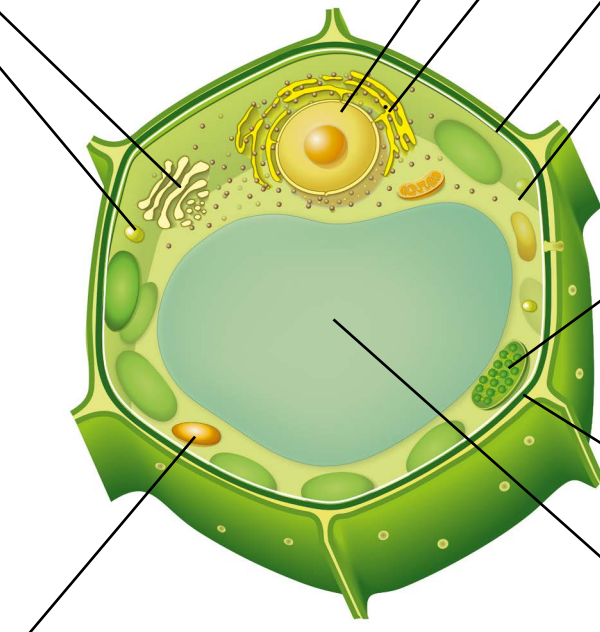
- ✓ Available off-the-shelf today
- ✓ Antibodies for thousands of species
- ✓ Supported by a strong publication record

## Peroxisome

Cat.....	AS09 501
DEG15.....	AS10 711
GOX.....	AS14 2772
HPR (matrix) .....	AS08 319
Pex14p.....	AS08 372

## Golgi

ARF1 (21 kDa).....	AS08 325
Sec21p (98 kDa).....	AS08 327



## Mitochondria

AOX1/2 (inner membrane).....	AS04 054
COXII (inner membrane).....	AS04 053A
GDC-H (matrix).....	AS05 074
IDH (matrix).....	AS06 203A
SHMT (matrix).....	AS05 075
VDAC1 (outer membrane).....	AS07 212

## Plastids (roots)

FNR (roots).....	AS20 4436
------------------	-----------

## Nuclei

H3 (histone).....	AS10 710
Nucleomorph HLIP.....	AS17 4117
SUN1,2 (nuclear envelope)....	AS15 2856

## ER

BiP (80 kDa).....	AS09 481
KDEL.....	AS13 2665
NAI2.....	AS20 4421
PYK10.....	AS20 4409

## Plasma membrane

H+ATPase.....	AS07 260
---------------	----------

## Cytoplasm

Actin (45 kDa).....	AS13 2640
cAPX (20 kDa).....	AS23 4940
cFBPase (37 kDa).....	AS04 043
NAB1.....	AS23 4921
RbcL (52-53 kDa).....	AS03 037
RBP40 (40 kDa).....	AS14 2820
SPS (120-130 kDa).....	AS06 185
UGPase (52 kDa, dicots).....	AS23 4916
UGPase (52 kDa, monocots)....	AS14 2813

## Chloroplast

CRD1 (thylakoid membrane) ....	AS06 122
Cyt c6 (lumen).....	AS06 202
PC (lumen).....	AS06 141
PEC1 (inner membrane).....	AS21 4528
PGL35 (plastoglobules).....	AS06 116
PRK (stroma) .....	AS07 257
PsaD(thylakoid membrane).....	AS09 461
PsbA (thylakoid membrane)....	AS05 084
RbcL (stroma).....	AS03 037
Tic40 (inner membrane).....	AS10 709
TROL (inner membrane).....	AS19 4257
Toc75 (outer membrane).....	AS08 351

## Cell wall

CesA4 (IRX5).....	AS12 2582
CesA7 (IRX3).....	AS12 2581
CesA7 (IRX1).....	AS12 2580
XTH-Xet .....	AS08 319

## Vacuole

PR-2 (vacuolar contents).....	AS07 208
PR-3 (vacuolar contents).....	AS07 207
V-ATPase (tonoplast).....	AS07 213
VPS35.....	AS20 4402

## Microsomal membrane

CNX1/2.....	AS12 2365
-------------	-----------

## Antibody marker set

Product #: SA000001, SA000002 and SA000003

Combine marker antibodies of your choice in a set of 3, 5 or 10 products.

The Plant Cell Compartment Antibody Marker Sets are collections that allow estimation of fraction purity for a range of plant species, including *Arabidopsis thaliana*. Selected antibodies are accompanied by a protein standard which can be used as a positive control or for quantitation purposes.