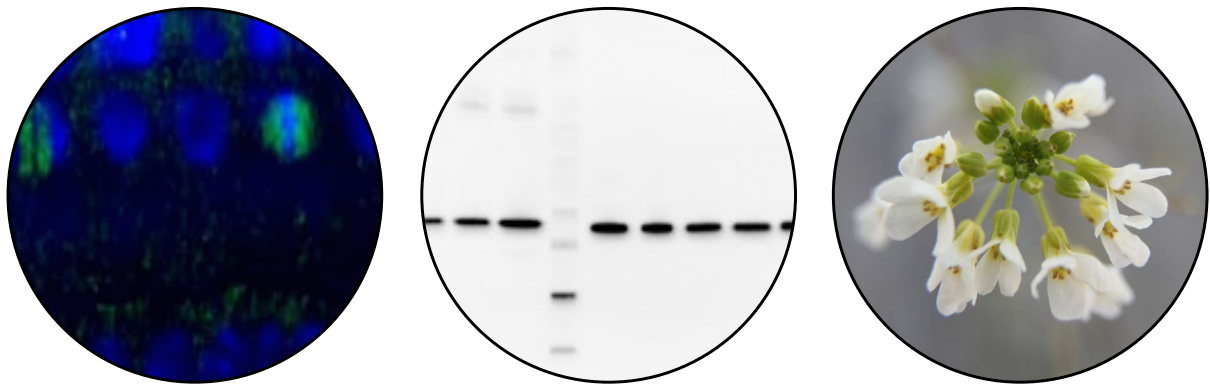


Arabidopsis thaliana antibodies

Agrisera offers **over 700** validated, high-quality antibodies for *Arabidopsis thaliana* research. These antibodies are frequently cited in scientific articles, and suitable for many applications, including immunolocalization, immunoprecipitation and Western blot.



A selection of antibodies for *Arabidopsis thaliana*

Product name.....	Product number	Applications
ACT Actin.....	AS13 2640	IF, WB
AtpB Beta subunit of ATP synthase, chloroplastic + mitoch (rabbit antibody)...	AS05 085	BN-PAGE, IF, WB
AtpB Beta subunit of ATP synthase, mitochondrial.....	AS16 3976	BN-PAGE, IF, WB
FtsZ Prokaryotic cell division GTPase, cyanobacterial.....	AS07 217	IF, IL, WB
H3 Histone H3 (polyclonal, serum).....	AS10 710 .	ChIp-qPCR, ICC, WB
Psb0 33 kDa of the oxygen evolving complex (OEC) of PSII (anti-peptide).....	AS05 092	IHC, IP, WB
PsbP 23 kDa protein of the oxygen evolving complex (OEC) of PSII.....	AS06 142-23	WB
PsbP 23 kDa protein of the oxygen evolving complex (OEC) of PSII.....	AS08 305	WB
RA Rubisco activase.....	AS22 4868	WB
RbcL Rubisco large subunit, form I.....	AS03 037	IF, IG, TP, WB
RbcL Rubisco large subunit, form I (chicken).....	AS01 017	IL, WB
RPN6 26S proteasome non-ATPase regulatory subunit 9.....	AS15 2832A	WB
Tubulin alpha chain.....	AS10 680	IF, WB
Tubulin beta chain.....	AS10 681	IF, WB
H+ATPase Plasma membrane H+ATPase (rabbit antibody).....	AS07 260	IF, IL, WB
PsbA D1 protein of PSII, C-terminal (thylakoid membrane marker)	AS05 084	IG, WB
AGO1 Argonaute 1.....	AS09 527	ChIP,IL, WB
PsaA PSI-A core protein of photosystem I.....	AS06 172	IG, WB

Find your antibody!
Agrisera antibodies matched with TAIR gene IDs:
www.agrisera.com/gene-IDs

Compartment markers

Combine marker antibodies in a set of 3, 5 or 10 products

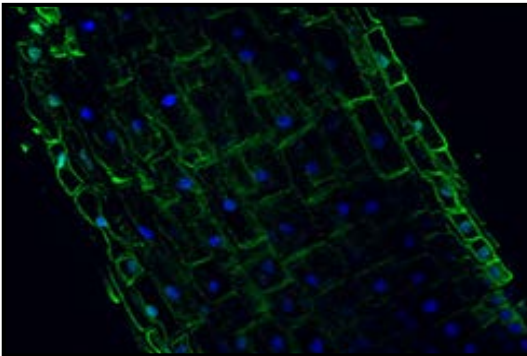
Product #: SA000001, SA000002 and SA000003

The Plant Cell Compartment Antibody Marker Sets are collections of antibodies, allowing the estimation of fraction purity for a range of plant species, including *Arabidopsis thaliana*. Selected antibodies are accompanied by a protein standard which can be used as a positive control or for quantitation purpose.

Application examples

Anti-H+ATPase

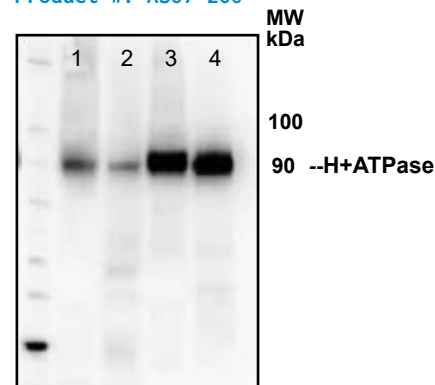
Product #: AS07 260



H+ATPase plasma membrane localization in *A. thaliana* roots. Courtesy Dr. Taras Pasternak, Freiburg University.

Anti-H+ATPase

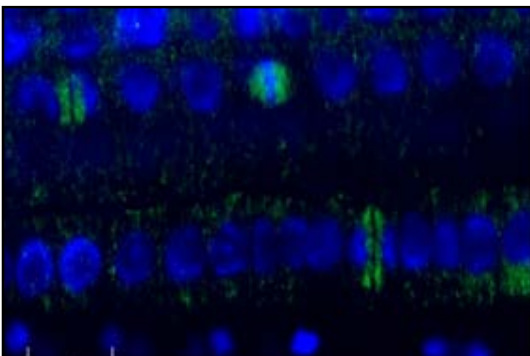
Product #: AS07 260



WB using Agrisera H+ATPase antibody on 20 µg of total protein from *A. thaliana* (1), *H. vulgare* (2), *Z. mays* (3), *N. tabacum* plasma membrane fraction, 2.5 µg (4).

Anti-Tubulin beta

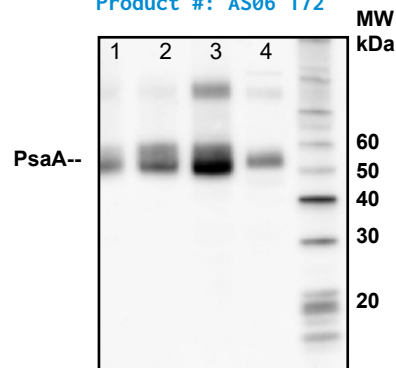
Product #: AS10 681



Tubulin beta localization in *A. thaliana* epidermis cells using Agrisera primary anti-Tubulin (AS10 681) antibody, visualized in green.

Anti-PsaA

Product #: AS06 172



WB using Agrisera PsaA antibody on 2 µg of total protein from (1) *A. thaliana* leaf, (2) *H. vulgare* leaf, (3) *C. reinhardtii* total cell, (4) *Synechococcus* sp. 7942 total cell.

Speed up your research with the most comprehensive
Arabidopsis antibody collection on the market!