

Agrisera

Antibodies

Plant and algal research



CiteAb

WINNER

AGRISERA

PLANT SCIENCE ANTIBODY
SUPPLIER OF THE YEAR

Contact Agrisera

Ordering and technical support



Fanny

Joanna

Edith

Isabel

Malin

Evelina

Agrisera offers prompt and professional support, within 24 hours. Among other things, we offer help determining antibody reactivity in cases where the antibody has not been used on a given species or application, as well as Western blot troubleshooting. Agrisera's way of working for the last 40 years has been described as "Fast, collaborative and efficient – to secure your scientific success".

www.agrisera.com

Phone: +46 935 33 000

Ordering and shipping: orders@agrisera.com

Technical support: support@agrisera.com

Live chat at: www.agrisera.com



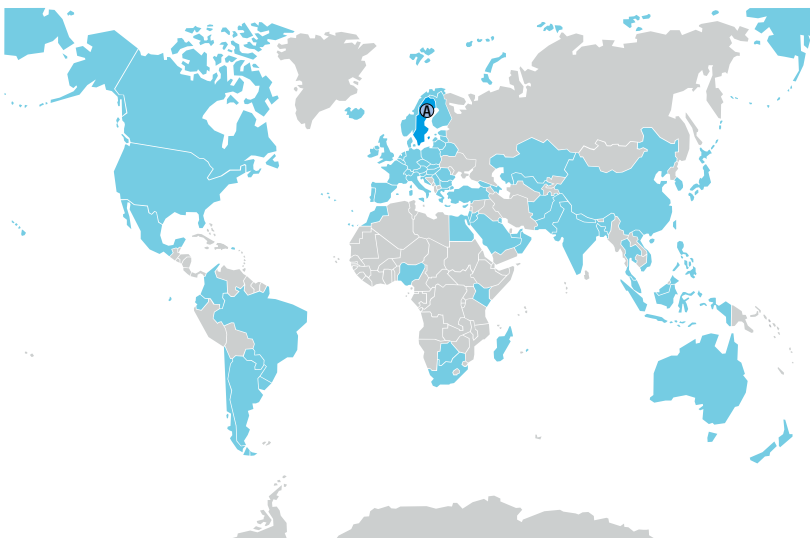
Link to technical resources:

www.agrisera.com/en/protocols-and-information

www.agrisera.com/technical-blog

Worldwide shipping

Agrisera has customers all over the world. Countries where our customers currently reside are marked blue in the map below.



Ordering and shipping information:

www.agrisera.com/en/ordering-and-shipment

Catalog updated: 2025-01-07

Agrisera AB reserves the right to make additions, deletions, or modification to the contents of this catalog at any time without prior notice. If you have any questions about the specifications of any products, please contact us.

Contents

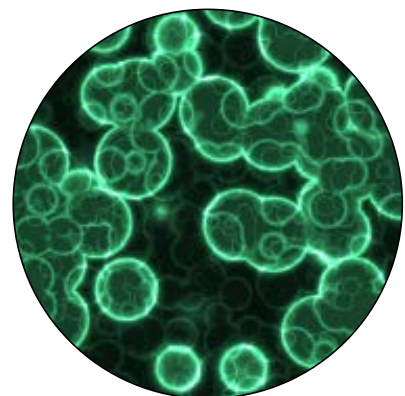
Plant antibody collection	4	Hormones	28-32
.....		Abscisic acid.....	28
Agrisea Unique Features	5	Auxins.....	28
.....		Biosynthesis/regulation.....	28
Global antibodies	6	Brassinosteroids.....	29
.....		Cytokinins.....	29
Protein standards-quantitation	7	ELISA kits.....	29
.....		Ethylene.....	29
Loading controls	7	Gibberellins.....	32
.....		Jasmonates.....	32
Compartment markers	7-10	Salicylic acid.....	32
Cell wall.....	7	
Chloroplast.....	8	Mitochondria/Respiration	33
Cytoplasm.....	8	
Endoplasmic reticulum.....	8	Membrane transport	34-35
Golgi.....	8	
Mitochondrial.....	9	Endomembrane.....	34
Nuclear.....	9	Plasma membrane.....	35
Peroxisomal.....	9	Vacuolar membrane.....	35
Plasma membrane.....	9	
Plastidial.....	9	Nitrogen metabolism	36
Vacuolar.....	10	
.....		Photosynthesis	36-43
Bioenergetics	11	ATP synthase.....	36
.....		Biogenesis/architecture.....	36
Carbohydrates	11-12	Carotenoid metabolism.....	37
.....		Chaperones/Transporters.....	37
Cell wall	12-13	Chlorophyll.....	37
.....		Electron transfer.....	38
Development biology	14-17	GreenCut.....	39
Circadian clock.....	14	Kinases.....	39
Cytoskeleton.....	14	LHC.....	40
Flowering.....	14	Light acclimation.....	40
Ion metabolism.....	15	Proteases.....	41
Lipid metabolism.....	15	PSI (Photosystem I).....	41
Photomorphogenesis.....	15	PSII (Photosystem II).....	42
Senescence/Cell death.....	16	RUBISCO/Carbon metabolism.....	43
Signal transduction.....	16-17	Sucrose metabolism.....	43
.....		
DNA/RNA/cell cycle	17-21	Plant pathogens	44
Cell cycle.....	17	Fungi.....	44
Epigenetics/DNA methylation.....	18	Viruses.....	44
Nuclear signalling.....	19	
Plant RNA.....	19	Protein modifications	44-45
RNA metabolism.....	20	Autophagy-related and ubiquitin-like proteins... ..	44
Transcription regulation.....	20	Plant proteasome.....	45
Translation.....	21	
.....		Toxins	45
Environmental stress	21-26	Mycotoxins.....	45
Cold stress.....	21	Plant toxins/Other compounds.....	45
Drought stress.....	22	
Heat shock.....	22-23	Detection reagents Chromogenic detection	46
Heavy metal stress.....	23	Detection reagents ECL	46
Hypoxia.....	24	Detection reagents ELISA	46
Oxidative stress.....	24	
Pathogen attack.....	25	Bacterial and fungal antibodies	47-48
Salt stress.....	26	
UB radiation.....	26	Epitope tag antibodies	49-51
Wounding.....	26	
.....		Secondary antibodies	52
Fermentation	27	
.....		Blocking/control	53
Food proteins/Allergens	27	
.....		Appendix	54-55

Speed up your research with the most comprehensive plant and algal antibody collection on the market.

Agrisera is a Swedish company, founded in 1985, specialized in antibody production and purification. We provide off-the-shelf antibodies for plant and algal research, with prompt delivery worldwide, and reactivity to thousands of species, as well as over 2000 secondary antibodies for various applications.

Over 30 years in the antibody business has taught us a lot, and we are proud to say there are few problems we cannot help you solve. Agrisera is easy to contact, and as our client you get direct access to Agrisera staff scientists who will answer all your queries promptly. As of June 2021, Agrisera is ISO 9001:2015 certified.

Agrisera antibodies – reactive in thousands of plant and algal species, cited in thousands of scientific articles.



Algae
Archaeplastida
Bryophyte
Non-vascular plants
Vascular plants
Spermatophytes
Pteridophyte
Gymnosperm
Angiosperm

Arabidopsis thaliana
Glycine max
Hordeum vulgare
Nicotiana tabacum
Oryza sativa
Pinus sylvestris
Solanum tuberosum
Zea mays

... and many more at: www.agrisera.com/species

Agrisera Unique Features

Benefit from unique features of the Agrisera plant and algal antibody collection.



- Agrisera antibodies are independently validated in well-known research laboratories worldwide, using various techniques, such as Western blot, immunolocalization and ChIP.
- The antigens used to elicit Agrisera antibodies are chosen based on a broad species reactivity. This means that the same antibody can be used on both algal and higher plant samples.
- The minimum antibody dilution of Agrisera antibodies is 1: 1000, and in some cases, the antibodies can be diluted as far as 1: 50 000, or even 1: 100 000, which means that in terms of dilution, our products are above average on the market.
- Most Agrisera antibodies are antigen affinity purified using the specific antigen used to elicit said antibody. This means that the vast majority of our products consists of >95% specific antibodies, and not a total immunoglobulin fraction, as obtained when using Protein A or G affinity purification.
- In 2019, Agrisera was awarded the Plant Science Antibody Supplier of the Year, due to our antibodies having the most extensive publication record in plant science.
- Agrisera offers prompt and professional support, within 24 hours. Among other things, we offer help to determine antibody reactivity in cases when the antibody has not been used on a given species or application, as well as troubleshooting for Western blot and other antibody techniques.
- You can rely on Agrisera's promises.



Agrisera is ISO 9001:2015 certified

Global antibodies

Product name.....	Product no	Applications
AtpB Beta subunit of ATP synthase, chloropl. + mitoch. (chicken antibody)....	AS03 030	WB, IL
AtpB Beta subunit of ATP synthase, chloropl. + mitoch. (rabbit antibody).....	AS05 085BN-PAGE,IF,U-ExM,WB	
Cat Catalase (peroxisomal marker).....	AS09 501	WB
Cyt b6 / PetB Thylakoid membrane cytochrome b6 protein, N terminal.....	AS18 4169	BN-PAGE, WB
FtsH1-11 ATP-dependent zinc metalloprotease FtsH1-11.....	AS11 1789	BN-PAGE, WB
FtsZ1 and 2 Plant cell division protein FtsZ1 and FtsZ2.....	AS09 413	WB
FtsZ2 Plant cell division protein ftsZ2.....	AS13 2651	WB
GLN1 GLN2 GS1 GS2 glutamine synthetase global antibody.....	AS08 295	WB
GlnA Glutamine synthetase.....	AS01 018	WB
GOGAT Glutamine oxoglutarate aminotransferase.....	AS07 242	WB
H+ATPase Plasma membrane H+ATPase (chicken).....	AS13 2671	WB
H+ATPase Plasma membrane H+ATPase (rabbit).....	AS07 260	IF, IL, WB
...ALP-conjugated (AS07 260-ALP), Biotin-conjugated (AS07 260B), HRP-conjugated (AS07 260-HRP).....		
DyLight@488-conj. (AS07 260-DL488), DyLight@594-conj. (AS07 260-DL594), DyLight@650-conj. (AS07 260-DL650)		
HSP70 Heat shock protein 70 cytoplasmic.....	AS08 371	IP, WB
HSP70/HSC70 Heat shock protein 70/Heat shock cognate protein 70 (serum).....	AS05 083	IP, WB
HSP70/HSC70 Heat shock protein 70/Heat shock cognate protein 70, (affi.....	AS05 083A	IP, WB
NifH Nitrogenase iron protein.....	AS01 021A	IF, IHC, WB
PEPC Phosphoenolpyruvate carboxylase.....	AS09 458	IL, WB
...ALP-conjugated (AS09 458-ALP), Biotin-conjugated (AS09 458B), HRP-conjugated (AS09 458-HRP).....		
DyLight@488-conj. (AS09 458-DL488), DyLight@594-conj. (AS09 458-DL594), DyLight@650-conj. (AS09 458-DL650)		
PEPCK PEP carboxykinase.....	AS07 241	WB
PetC Rieske iron-sulfur protein of Cyt b6/f complex.....	AS08 330	WB
PsaB PSI-B core subunit of photosystem I.....	AS10 695	WB
PsaC PSI-C core subunit of photosystem I.....	AS10 939	WB
PsbA D1 protein of PSII, C-terminal (rabbit antibody).....	AS05 084	WB
PsbA D1 protein of PSII, C-terminal (affinity purified).....	AS05 084A	WB
...ALP-conj (AS05 084A-DL488), Biotin-conj (AS05 084B), FITC-conj (AS05 084A-FITC), HRP-conj (AS05 084A-HRP)		
DyLight@488-conj. (AS09 458-DL488), DyLight@594-conj. (AS05 084A-DL594), DyLight@650-conj.(AS05 084A-DL650)		
PsbA D1 protein of PSII, C-terminal (chicken antibody).....	AS01 016	WB
PsbA D1 protein of PSII, N-terminal.....	AS11 1786	WB
PsbA D1 protein of PSII, phosphorylated.....	AS13 2669	WB
PsbB CP47 protein of PSII.....	AS04 038	WB
PsbD D2 protein of PSII.....	AS06 146	WB, CN-PAGE
RbcL Rubisco large subunit, form I (chicken).....	AS01 017	IL, WB
RbcL Rubisco large subunit, form I (rabbit).....	AS03 037	IF, IG, TP, WB
RbcL Rubisco large subunit, form I (affinity purified).....	AS03 037A	WB
...ALP-conjugated (AS03 037-ALP), Biotin-conjugated (AS03 037B), HRP-conjugated (AS03 037-HRP).....		
DyLight@488-conj. (AS03 037-DL488), DyLight@594-conj. (AS03 037-DL594), DyLight@650-conj. (AS03 037-DL650)		
RbcL II Rubisco large subunit, form II.....	AS15 2955	IF, WB
RPB2 DNA-directed RNA polymerase II subunit 2.....	AS20 4376	WB
Rubisco ELISA quantitation kit.....	AS15 2994	WB
SBPase Sedoheptulose-1,7-bis phosphatase.....	AS15 2873	WB
SPS Sucrose phosphate synthase, global.....	AS03 035A	WB
...ALP-conjugated (AS03 035-ALP), Biotin-conjugated (AS03 035B), HRP-conjugated (AS03 035-HRP).....		
DyLight@488-conj. (AS03 035-DL488), DyLight@594-conj. (AS03 035-DL594), DyLight@650-conj. (AS03 035-DL650)		



Publication record: www.agrisera.com/publication-record

Protein standards – Quantitation

Product name	Product number	Applications
AtpB Positive control/quantitation standard	AS03 030S	WB
CP43' IsiA homolog of plant CP43 positive control/quantitation standard	AS10 111S	WB
HSP70 Positive control/quantitation standard	AS08 371S	WB
PetC Rieske iron-sulfur protein of Cyt b6/f complex, protein standard	AS08 330S	WB
PsaC Positive control/quantitation standard	AS04 042S	WB
PsbA D1 positive control/quantitation standard	AS01 016S	WB
PsbD D2 protein of PSII positive control/quantitation standard	AS09 146S	WB
RbcL Rubisco positive control/quantitation standard	AS01 017S	WB
RbcL II Rubisco form II positive control/quantitation standard	AS15 2955S	WB
SBP Sedoheptulose-1,7-bis phosphatase positive control/quantitation standard	AS15 2873S	WB

Loading controls

Product name	Product number	Applications
ACT Actin	AS13 2640	IF, WB
ACT Actin (protein)	AS16 4111S	WB
AtpB Beta subunit of ATP synthase, chloroplastic + mitoch (rabbit antibody)	AS05 085	BN-PAGE,IF,U-ExM, WB
FtsZ Procaryotic cell division GTPase, cyanobacterial	AS07 217	IF, IL, WB
H3 Histone H3 (polyclonal, serum)	AS10 710	ChIp-qPCR, ICC, WB
H3 Histone H3 (rabbit antibody, affinity purified)	AS10 710A	ChIp-qPCR, WB
...ALP-conjugated (AS10 710-ALP), Biotin-conjugated (AS10 710B), HRP-conjugated (AS10 710-HRP)		
DyLight® 488-conj. (AS10 710-DL488), DyLight® 594-conj. (AS10 710-DL594), DyLight® 650-conj. (AS10 710-DL650)		
PsbP 23 kDa protein of the oxygen evolving complex (OEC) of PSII	AS06 142-23	WB
PsbP 23 kDa protein of the oxygen evolving complex (OEC) of PSII	AS08 305	WB
RA Rubisco activase	AS22 4868	WB
RbcL Rubisco large subunit, form I (chicken)	AS01 017	IL, WB
RbcL Rubisco large subunit, form I (rabbit)	AS03 037	IF, IG, TP, WB
RbcL Rubisco large subunit, form I (affinity purified)	AS03 037A	WB
...ALP-conjugated (AS03 037-ALP), Biotin-conjugated (AS03 037B), HRP-conjugated (AS03 037-HRP)		
DyLight® 488-conj. (AS03 037-DL488), DyLight® 594-conj. (AS03 037-DL594), DyLight® 650-conj. (AS03 037-DL650)		
RPN6 26S proteasome non-ATPase regulatory subunit 9	AS15 2832A	WB
RPN6 26S proteasome non-ATPase regulatory subunit 9 (<i>A. thaliana</i>)	AS15 2845	WB
Tubulin alpha chain	AS10 680	IF, WB
Tubulin alpha chain, Biotin conjugated (clone TU-01)	AS21 4624	Flowcyt,ICC,IHC,WB
Tubulin alpha chain, FITC conjugated (clone TU-01)	AS21 4626	ICC, Flowcyt
Tubulin beta chain	AS10 681	IF, WB

Compartment markers – Cell wall

Product name	Product number	Applications
Cell wall set 3 antibodies	AS20 4518	ELISA, IF
CesA4 (IRX5) Cellulose synthase A catalytic subunit 4 [UDP-forming]	AS12 2582	WB
CesA7 (IRX3) Cellulose synthase A catalytic subunit 7 [UDP-forming]	AS12 2581	WB
CesA8 (IRX1) Cellulose synthase A catalytic subunit 8 [UDP-forming]	AS12 2580	IF, WB
XTH-Xet XET5 Xyloglucan xyloglucosyl transferase	AS08 319	ELISA, WB

Compartment markers – Chloroplast

Product name	Product number	Applications
CRD1 Cyanobacterial homolog of plant CHL27 cyclase	AS06 122	WB
Cyt c6 Thylakoid lumen cytochrome c6 protein	AS06 202	WB
PC Plastocyanin	AS06 141	IG, WB
PEC1 Plastid Envelope Channel 1	AS21 4528	WB
PsbA D1 protein of PSII, C-terminal	AS05 084	WB
PsbA D1 protein of PSII, C-terminal (affinity purified)	AS05 084A	WB
..ALP-conj (AS05 084A-ALP), Biotin-conj (AS05 084B), FITC-conj (AS05 084A-FITC), HRP-conj (AS05 084A-HRP)..		
DyLight®488-conj. (AS09 458-DL488), DyLight®594-conj. (AS05 084A-DL594), DyLight®650-conj. (AS05 084A-DL650)		
PsbA D1 protein of PSII, phosphorylated	AS13 2669	WB
RbcL Rubisco large subunit, form I (rabbit)	AS03 037	IF, IG, TP, WB
RbcL Rubisco large subunit, form I (affinity purified)	AS03 037A	WB
...ALP-conjugated (AS03 037-ALP), Biotin-conjugated (AS03 037B), HRP-conjugated (AS03 037-HRP).....		
DyLight® 488-conj. (AS03 037-DL488), DyLight® 594-conj. (AS03 037-DL594), DyLight® 650-conj. (AS03 037-DL650)		
Tic40 Inner envelope membrane translocon complex protein (chloroplast)	AS10 709	IF, WB

Compartment markers – Cytoplasm

Product name	Product number	Applications
ACT Actin (45 kDa)	AS13 2640	IF, WB
ACT Actin (45 kDa) (recombinant monoclonal, clone 14H4G8)	AS21 4615	IF, WB
cFBPase Cytosolic fructose-1,6-bisphosphatase (37 kDa)	AS04 043	WB
NAB1 nucleic acid binding protein 1, Chlamydomonas	AS23 4921	WB
RbcL Rubisco large subunit, form I (52.5 kDa, cyanobacteria only)	AS03 037	IF, IG, TP, WB
RbcL Rubisco large subunit, form I (affinity purified)	AS03 037A	WB
...ALP-conjugated (AS03 037-ALP), Biotin-conjugated (AS03 037B), HRP-conjugated (AS03 037-HRP).....		
DyLight® 488-conj. (AS03 037-DL488), DyLight® 594-conj. (AS03 037-DL594), DyLight® 650-conj. (AS03 037-DL650)		
RBP40 38 kDa RNA-binding protein (40 kDa)	AS14 2820	IP, WB
SPS Sucrose phosphate synthase, maize (~130 kDa for <i>Zea mays</i>)	AS06 185	IL, WB
SPS Sucrose phosphate synthase, global (120-130 kDa)	AS03 035A	WB
...ALP-conjugated (AS03 035-ALP), Biotin-conjugated (AS03 035B), HRP-conjugated (AS03 035-HRP).....		
DyLight®488-conj. (AS03 035-DL488), DyLight®594-conj. (AS03 035-DL594), DyLight®650-conj. (AS03 035-DL650)		
UGPase UDP-glucose pyrophosphorylase (cytoplasm marker)	AS23 4916	WB

Compartment markers – ER

Product name	Product number	Applications
BiP Lumenal-binding protein (rabbit antibody)	AS09 481	ELISA, IF, IG, WB
...ALP-conjugated (AS09 481-ALP), Biotin-conjugated (AS09 481B), HRP-conjugated (AS09 481-HRP).....		
DyLight® 488-conj. (AS09 481-DL488), DyLight® 594-conj. (AS09 481-DL594), DyLight® 650-conj. (AS09 481-DL650)		
HDEL Endoplasmic reticulum retention signal	AS10 683	IF, IG, WB
KDEL Endoplasmic reticulum retention signal	AS13 2665	IHC, WB
NAI2 TSA1-like protein (ER lumen marker)	AS20 4421	IF, WB
PYK10 Beta-Galactosidase (internal) (ER marker, immunolocalisation)	AS20 4409	IF, IHC, IP, WB
SMT1 Sterol methyltransferase 1	AS07 266	IL, WB

Compartment markers – Golgi

Product name	Product number	Applications
ARF1 ADP-ribosylation factor 1	AS08 325	IF, IG, WB
Sec21p Gamma subunit, COP vesicles	AS08 327	IF, WB

Compartment markers – Mitochondria

Product name	Product number	Applications
AOX1 Alternative oxidase 1 (algal)	AS06 152	WB
AOX1/2 Plant alternative oxidase 1 and 2	AS04 054	IL, WB
AOX2 Plant alternative oxidase 2	AS21 4532	WB
CNX1/2 Calnexin Homolog 1/2	AS12 2365	WB
COXII Cytochrome oxidase subunit II	AS04 053A	BN-PAGE, WB
COXIIb Cytochrome oxidase subunit II b (algal)	AS06 151	WB
GDC-H H protein of glycine decarboxylase complex (GDC)	AS05 074	WB
IDH Isocitrate dehydrogenase	AS06 203A	WB
SHMT Serine hydroxymethyltransferase	AS05 075	WB
VDAC1-5 Voltage-dependent anion-selective channel protein 1-5	AS07 212	BN-PAGE, IL, WB
...ALP-conjugated (AS07 212-ALP), Biotin-conjugated (AS07 212B), HRP-conjugated (AS07 212-HRP) DyLight®488-conj. (AS07 212-DL488), DyLight®594-conj. (AS07 212-DL594), DyLight®650-conj. (AS07 212-DL650)		

Compartment markers – Nuclear

Product name	Product number	Applications
H3 Histone H3 (rabbit antibody)	AS10 710	ChIp-qPCR, ICC, WB
...ALP-conjugated (AS10 710-ALP), Biotin-conjugated (AS10 710B), HRP-conjugated (AS10 710-HRP) DyLight® 488-conj. (AS10 710-DL488), DyLight® 594-conj. (AS10 710-DL594), DyLight® 650-conj. (AS10 710-DL650)		
Nucleomorph HLIP Nucleomorph high-light induced protein	AS17 4117	WB
SUN1,2 SUN domain-containing protein 1,2	AS18 4224	WB
SUN1,2 (nuclear envelope protein) (<i>Arabidopsis thaliana</i>)	AS15 2856	WB

Compartment markers – Peroxisomal

Product name	Product number	Applications
Cat Catalase (peroxisomal marker)	AS09 501	WB
DEG15 Endopeptidase (peroxisomal marker)	AS10 711	WB
GOX Glycolate oxidase 1,2,3	AS14 2772	WB
HPR Hydroxypyruvate reductase (peroxisomal matrix marker)	AS11 1797	WB
Pex14p Peroxisomal marker	AS08 372	WB

Compartment markers – Plasma membrane

Product name	Product number	Applications
H+ATPase Plasma membrane H+ATPase (chicken antibody)	AS13 2671	WB
H+ATPase Plasma membrane H+ATPase (rabbit antibody)	AS07 260	IF, IL, WB
...ALP-conjugated (AS07 260-ALP), Biotin-conjugated (AS07 260B), HRP-conjugated (AS07 260-HRP) DyLight®488-conj. (AS07 260-DL488), DyLight®594-conj. (AS07 260-DL594), DyLight®650-conj. (AS07 260-DL650)		

Compartment markers – Plastidial

Product name	Product number	Applications
FNR Ferredoxin NADP Reductase (root)	AS20 4436	ELISA, WB

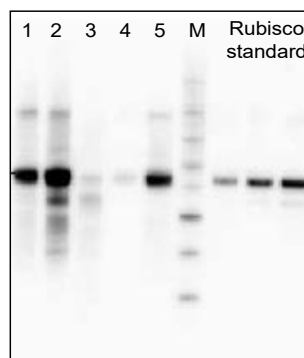
Compartment markers – Vacuolar

Product name	Product number	Applications
PR-2 GLU I Class I beta-1,3-glucanase	AS07 208	IL, WB
PR-3 / CHN Class I chitinase	AS07 207	IL, IP, WB
V-ATPase Epsilon subunit of tonoplast H+ATPase (rabbit antibody)	AS07 213	IF, IHC, WB
V-ATPase Epsilon subunit of tonoplast H+ATPase (goat antibody)	AS09 577	WB
V-ATPase Epsilon subunit of tonoplast H+ATPase (affinity purified)	AS09 577A	IF, WB
VPS35 Vacuolar protein sorting-associated protein 35B (marker of PVC)	AS20 4402	ELISA, IF, IP, WB

Application examples

Anti-Rbcl

Product #: AS03 037

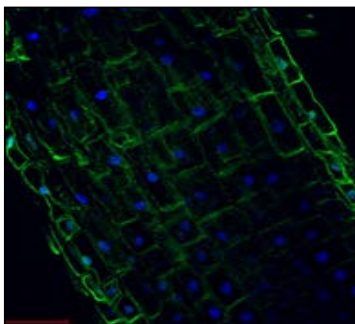


--Rbcl

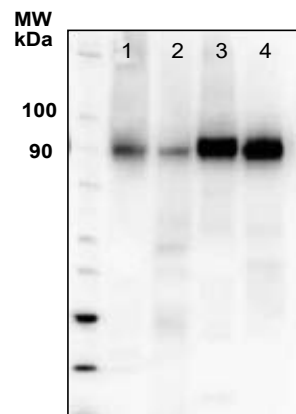
WB using Agrisera Rbcl antibody. Samples: 2 µg of total protein from various plant extracts (1-5), Markers MagicMarks (Invitrogen) (M), and Rubisco protein standard (AS01 017S) at 0.0625 pmol, 0.125 pmol, 0.25 pmol.

Anti-H+ATPase

Product #: AS07 260



H+ATPase plasma membrane localization in *A. thaliana* roots. Courtesy of Dr. Taras Pasternak, Freiburg University, Germany.

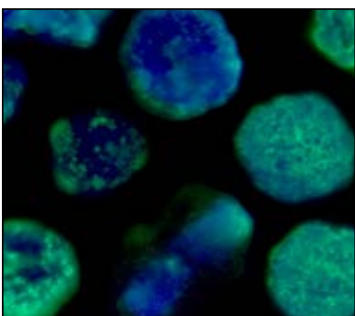


--H+ATPase

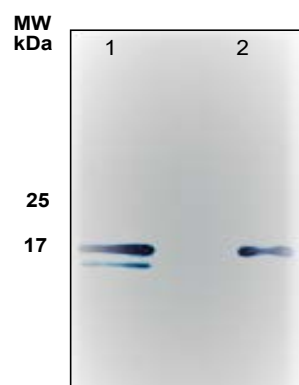
WB using Agrisera H+ATPase antibody on 20 µg of total protein from *A. thaliana* (1), *H. vulgare* (2), *Z. mays* (3), *N. tabaccum* plasma membrane fraction, 2.5 µg (4).

Anti-Histone 3

Product #: AS10 710



Immunocytochemical assay using Agrisera H3 antibody on excised apical parts of *V. faba* roots. Courtesy of Dr. Dorota Rybaczek, Łódź University, Poland.



--H3

WB using Agrisera H3 antibody on 1.20 µg of *A. thaliana* chromatin-enriched fraction (1) and 3.75 µg of total protein from 4-week-old *A. thaliana* leaves (2). Courtesy of Weronika Sura and Dr. Piotr A. Ziolkowski, UAM, Poland.

Bioenergetics

Product name	Product number	Applications
AtpA Alpha subunit of ATP synthase, chloroplastic	AS08 304	IP, WB
AtpB Beta subunit of ATP synthase, chloroplastic + mitochondrial	AS03 030	IL, WB
AtpB Beta subunit of ATP synthase, chloroplastic + mitochondrial	AS05 085	BN-PAGE,IF,U-ExM,WB
AtpC Gamma subunit of ATP synthase, chloroplastic	AS08 312	WB
AtpD CF1 delta subunit of ATP synthase, Affinity purified	AS10 1590	WB
AtpD CF1 delta subunit of ATP synthase, Serum	AS10 1591	WB
AtpE Epsilon subunit of ATP synthase	AS10 1586	WB
AtpF CF0I subunit of ATP synthase	AS10 1604	WB
AtpG ATPsynthase subunit II b', chloroplastic	AS09 457	WB
AtpH ATP synthase subunit c, chloroplastic	AS05 071	WB
AtpH ATP synthase subunit c, chloroplastic	AS09 591	WB
AtpI CFoIV subunit of ATP synthase	AS10 1583	WB
NDPK Nucleoside diphosphate kinase	AS08 302	WB
PAB Protein in chloroplast atpase biogenesis	AS15 2833	WB

Carbohydrates

Product name	Product number	Applications
ACC synthase 7 1-aminocyclopropane-1-carboxylate synthase 7	AS14 2774	WB
ADGP ADP-glucose pyrophosphorylase	AS11 1739	WB
AKIN11 SNF1-related protein kinase catalytic subunit alpha KIN11	AS10 920	WB
AKINB2 SNF1-related protein kinase regulatory subunit beta-2	AS09 462	WB
AKINB3 SNF1-related protein kinase regulatory subunit beta-3	AS15 2859	WB
ALD Fructose-1,6 bisphosphate aldolase	AS08 294	WB
Alpha-mannosidase	AS09 452	ELISA,IF, IHC, WB
Alpha-mannosidase, Affinity purified	AS09 650	ELISA,IF, IHC, WB
Alpha-mannosidase, Biotin conjugated	AS09 453	ELISA,IF, IHC, WB
AMY Alpha-amylase	AS10 712	WB
BAM Beta-amylase, Biotin conjugated	AS09 380	ELISA,IF, IHC, WB
BAM1 Beta amylase 1 (chloroplastic)	AS15 2895	WB
Beta-1,4-glucosidase (hyperthermophilic enzyme)	AS15 3093	WB
cFBPase Cytosolic fructose-1,6-bisphosphatase	AS04 043	WB
Endo-beta-1,4 xylanase (hyperthermophilic enzyme)	AS15 3087	WB
FBA Fructose-bisphosphate aldolase class 2	AS13 2731	WB
FnCel5A Endo-beta-1,4 glucanase (hyperthermophilic enzyme)	AS15 3094	WB
Fucose	AS07 268	IL, WB
FUM1 + FUM2 Fumarase 1+2 (chloroplastic+mitochondrial)	AS16 3966	WB
GAPC1/2 Glyceraldehyde-3-phosphate dehydrogenase	AS15 2894	WB
GAPDH Glyceraldehyde-3-phosphate dehydrogenase (chloroplastic)	AS22 4848	WB
GLUC Beta-glucosidase	AS09 449	ELISA,IF, IHC, WB
GLUC Beta-glucosidase, Affinity purified	AS09 451	ELISA,IF, IHC, WB
GLUC Beta-glucosidase, Biotin conjugated	AS09 450	ELISA,IF, IHC, WB
HXK1 Hexokinase 1	AS12 2601	WB
HXK1 Hexokinase 1 (Chlamydomonas)	AS16 4083	WB
Linamarase	AS15 2862	WB
MDH2 Malate dehydrogenase 2 (mitochondrial)	AS15 3064	IP, WB
MDH4 Malate dehydrogenase 4 (cytoplasmic)	AS15 3065	WB
Oxalate oxidase, Biotin conjugated	AS09 519	ELISA, IF, IHC, WB
PEPC Phosphoenolpyruvate carboxylase	AS09 458	IL, WB
...ALP-conjugated (AS09 458-ALP), Biotin-conjugated (AS09 458B), HRP-conjugated (AS09 458-HRP)		
DyLight®488-conj. (AS09 458-DL488), DyLight®594-conj. (AS09 458-DL594), DyLight®650-conj. (AS09 458-DL650)		
PGM1 Phosphoglucomutase (cytoplasmic 1)	AS15 3066	WB
PPDK Pyruvate orthophosphate dikinase	AS13 2647	WB
Ramy 3D Alpha-amylase isozyme 3D	AS10 716	WB
SBPase Sedoheptulose-1,7-bis phosphatase	AS15 2873	WB
SPS Sucrose phosphate synthase (maize)	AS06 185	IL, WB

Carbohydrates

Product name	Product number	Applications
SPS Sucrose phosphate synthase, global	AS03 035A	WB
...ALP-conjugated (AS03 035-ALP), Biotin-conjugated (AS03 035B), HRP-conjugated (AS03 035-HRP)		
DyLight®488-conj. (AS03 035-DL488), DyLight®594-conj. (AS03 035-DL594), DyLight®650-conj. (AS03 035-DL650)		
SPSA1 Sucrose phosphate synthase isoform A1	AS15 2995	WB
SPSC Sucrose phosphate synthase isoform C	AS15 2997	WB
SUS1 Sucrose synthase 1	AS15 2830	WB
TPS1 Trehalose-6-phosphate synthase 1	AS12 2635	WB
TSWV Tomato Spotted Wilt Virus, Non-Structural Protein	AS20 4517	ELISA, IF, WB
UAGPase UDP-GlcNAc pyrophosphorylase	AS14 2829	WB
UGPase UDP-glucose pyrophosphorylase (cytoplasm marker)	AS05 086	IL, WB
UGPase UDP-glucose pyrophosphorylase (cytoplasm marker)	AS14 2813	WB
Xylose	AS07 267	WB

Cell wall

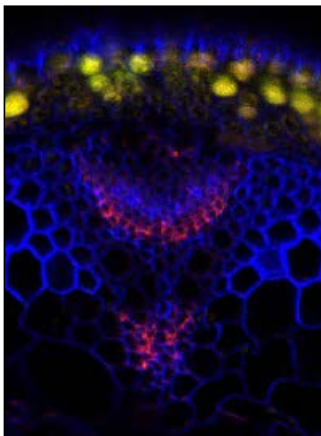
Product name	Product number	Applications
Acetylated Mannan (clone CCRC-M169)	AS20 4493-1ml	ELISA, IF, IL
Acetylated glucomannan (clone CCRC-M170)	AS16 3226-1ml	ELISA, IF
Arabinogalactan-2 (clone CCRC-M133)	AS16 3115-1ml	ELISA, IHC, IF
Arabinogalactan-3 (clone CCRC-M85)	AS16 3133-1ml	ELISA, IHC, IF
Arabinogalactan-4 (clone CCRC-M78)	AS16 3231-1ml	ELISA, IHC, IF
Arabinogalactan-Protein, AGP (monoclonal, clone JIM4)	AS22 4743-1ml	IF
Arabinogalactan-Protein, AGP (monoclonal, clone JIM8)	AS22 4744-1ml	IF
Arabinogalactan-Protein, AGP (monoclonal, clone JIM13)	AS22 4745-1ml	IF
Arabinogalactan-Protein, AGP (monoclonal, clone JIM15)	AS22 4747-1ml	IF
Arabinogalactan-Protein, AGP (monoclonal, clone JIM16)	AS22 4748-1ml	ELISA, IF
Arabinogalactan-protein, AGP (monoclonal, clone LM2)	AS18 4211-1ml	ELISA, IF
Arabinogalactan-Protein, AGP (monoclonal, clone LM14)	AS22 4746-1ml	IF
Arabinogalactan-Protein, AGP (monoclonal, clone LM30)	AS22 4749-1ml	IF
CesA4 (IRX5) Cellulose synthase A catalytic subunit 4 [UDP-forming]	AS12 2582	WB
CesA7 (IRX3) Cellulose synthase A catalytic subunit 7 [UDP-forming]	AS12 2581	WB
CesA8 (IRX1) Cellulose synthase A catalytic subunit 8 [UDP-forming]	AS12 2580	IF, WB
Extensin Glycoprotein (monoclonal, clone JIM19)	AS22 4818-1ml	IF
Extensin Glycoprotein (monoclonal, clone JIM20)	AS22 4819-1ml	IF
Extensin glycoprotein (monoclonal, clone LM1)	AS18 4210-1ml	ELISA, IF
Ferulated polysaccharides (monoclonal, clone LM12)	AS18 4212-1ml	ELISA, IF
Fucosylated xyloglucan (clone CCRC-M1)	AS16 3136-1ml	ELISA, IF, IHC
Galactomannan-1 (clone CCRC-M70)	AS16 3116-1ml	ELISA, IF, IHC
Galactomannan-2 (clone CCRC-M166)	AS20 4494-1ml	ELISA, IL, IF
Galactomannan-2 (clone CCRC-M168)	AS20 4495-1ml	ELISA, IL, IF
Galactomannan-2 (clone CCRC-M174)	AS16 3232-1ml	ELISA, IF, IHC
Glucuronoxylan (monoclonal, clone LM28)	AS18 4208-1ml	ELISA, IF
Heteromannan (monoclonal, clone LM21)	AS18 4209-1ml	ELISA, IF
Heteromannan (monoclonal, clone LM22)	AS22 4809-1ml	IF
Heteroxylan (monoclonal, clone LM10)	AS18 4206-1ml	ELISA, IF
Heteroxylan (monoclonal, clone LM11)	AS18 4207-1ml	ELISA, IF
Homogalacturonan-1 (clone CCRC-M38)	AS16 3117-1ml	ELISA, IF, IHC
Linseed mucilage (clone CCRC-M141)	AS16 4038	ELISA, IHC, IF
Linseed mucilage (CCRC-M164) (Clone: 6F9.F6)	AS22 4740-1ml	ELISA
Non-fucosylated xyloglucan-1 (clone CCRC-M101)	AS16 3230-1ml	ELISA, IF, IHC
Non-fucosylated xyloglucan-2 (clone CCRC-M88)	AS16 3233-1ml	ELISA, IF, IHC
Non-fucosylated xyloglucan-3 (clone CCRC-M100)	AS16 3234-1ml	ELISA, IF, IHC
Non-fucosylated xyloglucan-4 (clone CCRC-M58)	AS16 3235-1ml	ELISA, IF, IHC
Non-fucosylated xyloglucan-5 (clone CCRC-M48)	AS16 3221-1ml	ELISA, IF, IHC
Pectic polysaccharide, alpha-1,5-arabinan (monoclonal, clone LM6)	AS18 4198-1ml	ELISA, IF
Pectic polysaccharide, alpha-1,5-arabinan (monoclonal, clone LM6-M)	AS18 4199-1ml	ELISA, IF
Pectic polysaccharide, alpha-1,5-arabinan (monoclonal, clone LM13)	AS18 4200-1ml	ELISA, IF

Cell wall

Product name.....	Product number	Applications
Pectic polysaccharide, beta-1,4-galactan (monoclonal, clone LM5).....	AS18 4197-1ml	ELISA, IF
Pectic polysaccharide, Branched Galactan (monoclonal, clone LM26).....	AS22 4808-1ml	IF
Pectic polysaccharide, homogalacturonan (monoclonal, clone JIM5).....	AS18 4194-1ml	ELISA, IF
Pectic polysaccharide, homogalacturonan (monoclonal, clone LM7).....	AS18 4196-1ml	ELISA, IF
Pectic polysaccharide, homogalacturonan (monoclonal, clone LM19).....	AS18 4191-1ml	ELISA, IF
Pectic polysaccharide, homogalacturonan (monoclonal, clone LM18).....	AS18 4192-1ml	ELISA, IF
Pectic polysaccharide, homogalacturonan (monoclonal, clone LM20).....	AS18 4193-1ml	ELISA, IF
Pectic polysaccharide, Rhamnogalacturonan (monoclonal, clone LM16).....	AS18 4201-1ml	ELISA, IF
Pectic polysaccharide, Xylogalacturonan (monoclonal, clone LM8).....	AS18 4202-1ml	ELISA, IF
Rhamnogalacturonan-I / Arabinogalactan (clone CCRC-M7).....	AS16 3225-1ml	ELISA, IF, IHC
Rhamnogalacturonan-I backbone (clone CCRC-M35).....	AS16 3224-1ml	ELISA, IF, IHC
Rhamnogalacturonan-Ia (clone CCRC-M2).....	AS16 3134-1ml	ELISA, IF, IHC
Rhamnogalacturonan-Ib (clone CCRC-M61).....	AS16 3237-1ml	ELISA, IF, IHC
Rhamnogalacturonan-Ic (clone CCRC-M23).....	AS16 3236-1ml	ELISA, IF, IHC
RHD3 Protein Root Hair Defective 3 (N-terminal).....	AS20 4417	WB
XTH-Xet XET5 Xyloglucan xyloglucosyl transferase.....	AS08 319	ELISA, WB
Xylan (CCRC-M113).....	AS22 4737-1ml	ELISA
Xylan (low arab) (clone CCRC-M109).....	AS22 4738-1ml	ELISA, IF, IL
Xylan-1 / Xyloglucan (clone CCRC-M108).....	AS16 3135-1ml	ELISA, IF, IHC
Xylan-3 (clone CCRC-M114).....	AS16 3227-1ml	ELISA, IF, IHC
Xylan-4 (clone CCRC-M154).....	AS16 3238-1ml	ELISA, IF, IHC
Xylan-5 (clone CCRC-M144).....	AS16 3239-1ml	ELISA, IF, IHC
Xylan-6 (clone CCRC-M138).....	AS16 3229-1ml	ELISA, IF, IHC
Xylan-7 (clone CCRC-M149).....	AS16 3228-1ml	ELISA, IF, IHC
Xyloglucan (clone CCRC-M96).....	AS20 4492-1ml	ELISA
Xyloglucan (monoclonal, clone LM15).....	AS18 4203-1ml	ELISA, IF
Xyloglucan (monoclonal, clone LM24).....	AS18 4204-1ml	ELISA, IF
Xyloglucan (monoclonal, clone LM25).....	AS18 4205-1ml	ELISA, IF
Xyloglucan from Sycamore (CCRC-M102).....	AS22 4736-1ml	ELISA
Xylosyl residues (monoclonal, clone LM23).....	AS22 4751-1ml	IF

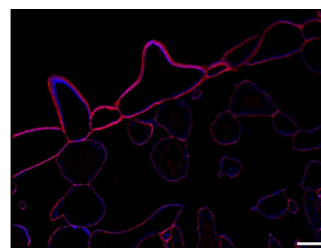
Application examples

Anti-Fucosylated xyloglucan
Product #: AS16 3136-1ml



Localization of fucosylated xyloglucan (red) in *Arabidopsis thaliana* hypocotyl, Calcofluor White counterstain (blue) and cell wall autofluorescence (yellow). Courtesy of Dr. Urs Fisher, Umeå Plant Science Centre, Sweden.

Anti-Xyloglucan
Product #: AS18 4205-1ml



Localization of xyloglucan (red) in Cassava leaf, epidermal layer. Counterstained with Calcofluor White (blue). Courtesy of Dr. Kirk Czymbek, Donald Danforth Plant Science Center, USA.

Developmental biology – Circadian clock

Product name	Product number	Applications
CCA1 Circadian clock associated 1	AS13 2659	WB
DET1 Regulator of the proteasomal degradation of LHY	AS15 3082	WB
GI Gigantea	AS12 1864A	WB
LHY Late elongated hypocotyl	AS13 2661	WB
LUX Transcription factor LUX	AS16 4106	WB
RPS6A 40S ribosomal protein S6-1	AS19 4292	WB
ZTL (AD01) Zeitlupe (Adagio protein 1)	AS13 2662	WB
RPS6A-P Phosphorylated (Ser237) 40S ribosomal protein S6-1	AS19 4291	WB
RPS6A-P Phosphorylated (Ser240) 40S ribosomal protein S6-1	AS19 4302	WB

Developmental biology – Cytoskeleton

Product name	Product number	Applications
ACT Actin	AS13 2640	IF, WB
ACT Actin (monoclonal)	AS16 3141	IHC, WB
ACT Actin (recombinant monoclonal, clone 14H4G8)	AS21 4615	WB
ACT 1,3,4,12 Actin 1, 3, 4, 12 (clone mAB45a (5-15 H7C5))	AS16 3139	WB
ACT 2,8,11 Actin 2, 8, 11 (clone mAb13a)	AS16 3140	IHC, WB
FtsZ Procaryotic cell division GTPase (cyanobacterial)	AS07 217	IF, IL, WB
FtsZ1 and 2 Plant cell division protein FtsZ1 and FtsZ2	AS09 413	WB
FtsZ2 Plant cell division protein ftsZ2	AS13 2651	WB
PR01 Profilin-1 (clone mAbPRF1a 2-14D9)	AS16 3210	IHC, WB
PR01,2 Profilin-1,2 (clone mAbPRF12a (2-11-H7))	AS16 3142	IHC, WB
PR04,5 Profilin-4,5 (clone mAbPRF45a (2-B8))	AS16 3143	IHC, WB
Tubulin alpha chain	AS10 680	IF, WB
Tubulin alpha chain (monoclonal antibody)	AS20 4483	ICC, IHC, IP, WB
Tubulin beta chain	AS10 681	IF, WB
Tubulin beta chain (monoclonal antibody)	AS20 4484	ICC, IHC, WB
Tubulin gamma chain (monoclonal antibodies)	AS20 4482	ICC, WB

Developmental biology – Flowering

Product name	Product number	Applications
CO Constans (chicken)	AS16 3958	WB
CO Constans (goat)	AS16 3160	WB
ELF3 EARLY FLOWERING 3	AS18 4168	WB
ELF4 Early flowering 4 (N-terminal)	AS22 4792	WB
FT/TSF Flowering locus T and twin sister of FT	AS06 198	WB
GI Gigantea	AS12 1864A	WB
SOC1 Suppressor of constans overexpression 1	AS12 1856	WB
ZTL (AD01) Zeitlupe (Adagio protein 1)	AS13 2662	WB



Search antibody by species: www.agrisera.com/search-by-species

Developmental biology – Ion Metabolism

Product name	Product number	Applications
AKT1 Potassium channel AKT1	AS09 516	WB
AtpB Beta subunit of ATP synthase, chloroplastic + mitoch (chicken antibody)	AS03 030	IL, WB
AtpB Beta subunit of ATP synthase, chloroplastic + mitoch (rabbit antibody)	AS05 085	BN-PAGE, IF, U-ExM, WB
Fer1 Ferritin 1 (pre-apoferritin)	AS06 126	WB
Fer2 Ferritin 2	AS06 196	WB
Ferritin 1-2 (plant)	AS15 2898	WB
FOX1 Plasma membrane ferroxidase FLP1	AS06 120	IF, WB
KC1 Potassium channel KAT3	AS09 515	WB
Kelch repeat protein (<i>Chlamydomonas</i>)	AS14 2761	WB
KrP Kelch repeat-containing protein / galactose oxidase (At3g07720)	AS14 2764	WB
Lysine-tRNA ligase	AS15 2899	WB
Na ⁺ /H ⁺ antiporter, sodium/hydrogen exchanger	AS09 484	ELISA, WB
OPT3 Oligopeptide transporter 3	AS22 4879	WB
Phosphothreonine	AS18 4171	IP, IF, ICC, WB
Pht1-1/2 Root phosphate transporter isoform 1-1 and 1-2	AS08 321	ELISA, WB
Pht1-6 Root phosphate transporter isoform 1-6	AS08 320	ELISA, WB
TKL1 Transketolase (chloroplastic)	AS15 2903	IP, WB
Tom 9 Mitochondrial import receptor subunit TOM9	AS15 2902	WB
V-ATPase Epsilon subunit of tonoplast H ⁺ ATPase	AS07 213	IF, IHC, WB
V-ATPase Epsilon subunit of tonoplast H ⁺ ATPase (goat antibody)	AS09 577	WB
V-ATPase Epsilon subunit of tonoplast H ⁺ ATPase (affinity purified)	AS09 577A	IF, WB
VDAC1-5 Voltage-dependent anion-selective channel protein 1-5	AS07 212	BN-PAGE, IL, WB
...ALP-conjugated (AS07 212-ALP), Biotin-conjugated (AS07 212B), HRP-conjugated (AS07 212-HRP)		
DyLight®488-conj. (AS07 212-DL488), DyLight®594-conj. (AS07 212-DL594), DyLight®650-conj. (AS07 212-DL650)		

Developmental biology – Lipid metabolism

Product name	Product number	Applications
CrPDAT1 Phospholipid: diacylglycerol acyltransferase	AS12 1875	WB
EDS1 Enhanced disease susceptibility 1	AS13 2751	WB
LOX Lipoxygenase	AS06 128	WB
LOX Lipoxygenase (affinity purified)	AS06 128A	WB
LOX-C Lipoxygenase (chloroplastic)	AS07 258	WB
Plastid acyl-ACP desaturase	AS13 2668	WB
PLDA1/2 Phospholipase D alpha 1/2	AS12 2364	IL, WB

Developmental biology – Photomorphogenesis

Product name	Product number	Applications
COP1 E3 ubiquitin-protein ligase COP1	AS20 4399	WB
CRY1 Cryptochrome 1	AS16 3933	WB
FT/TSF Flowering locus T and twin sister of FT	AS06 198	WB
GUN1 Pentatricopeptide repeat-containing protein GUN1, chloroplastic	AS23 4931	WB
HY5 Protein long hypocotyl 5	AS12 1867	WB
PHOT1 Phototropin-1	AS10 720	WB
PHOT2 Phototropin-2	AS10 721	WB
Phy Phytochrome (clone Oat-8)	AS20 4496	ELISA, IP, WB
Phy Phytochrome (clone Oat-25)	AS20 4500	ELISA, IP, WB
Phy Phytochrome (clone Pea-25)	AS20 4502	ELISA, IP, WB
PhyA Phytochrome A	AS07 220	WB
PhyB Phytochrome B (dicots)	AS21 4566	WB
PIF3 Phytochrome interacting factor 3 (goat antibody)	AS16 3954	WB
PIF4 Phytochrome interacting factor 4 (goat antibody)	AS16 3955	WB
PIF5 Phytochrome interacting factor 5	AS12 2112	WB
RGA DELLA protein RGA	AS11 1630	WB
VRN2 Vernalization protein 2	AS08 341	ELISA, WB

Developmental biology – Senescence/Cell death

Product name	Product number	Applications
ACD1 Accelerated cell death 1	AS11 1783	WB
ATG7 Ubiquitin-like modifier-activating enzyme atg7	AS15 3061	WB
EIN2 Ethylene insensitive 2	AS12 1865	WB
GLN1 GLN2 GS1 GS2 glutamine synthetase global antibody	AS08 295	WB
GLN2 GS2, chloroplastic form of glutamine synthetase	AS08 296	WB
MKK2 Mitogen-activated protein kinase kinase 2	AS15 2905	WB
PP2A Serine/threonine protein phosphatase 2A 59 kDa regulatory subunit B γ	AS13 2747	IL, WB
SAG12 Senescence-specific cysteine protease SAG12	AS14 2771	WB
SAM1-4 S-adenosylmethionine synthase	AS16 3148	WB
SOBIR1 Suppressor of BIR1 (chicken)	AS16 3959	IP, WB
SOBIR1 Suppressor of BIR1 (rabbit)	AS16 3204	IP, WB

Developmental biology – Signal transduction

Product name	Product number	Applications
14.3.3C 14.3.3-like protein C	AS08 317	ELISA, WB
14-3-3 GRF General regulatory element	AS12 2119	IL, WB
ACC synthase 7 1-aminocyclopropane-1-carboxylate synthase 7	AS14 2774	WB
AGB1 Guanine nucleotide-binding protein beta 1	AS16 3937	WB
AHK2 Histidine kinase 2	AS12 2113	WB
AKIN10 SNF1-related protein kinase catalytic subunit alpha KIN10	AS10 919	WB
AKIN11 SNF1-related protein kinase catalytic subunit alpha KIN11	AS10 920	WB
AKINB1 SNF1-related protein kinase regulatory subunit beta-1	AS09 460	WB
AKINB2 SNF1-related protein kinase regulatory subunit beta-2	AS09 462	WB
AKINB3 SNF1-related protein kinase regulatory subunit beta-3	AS15 2859	WB
AKING1 SNF1-related protein kinase regulatory subunit gamma 1	AS09 613	WB
AP2 Floral homeotic protein APETALA 2	AS12 2609	WB
ATG5 Autophagy-related protein 5	AS15 3060	WB
ATG7 Ubiquitin-like modifier-activating enzyme atg7	AS15 3061	WB
ATG8 Autophagy-related protein	AS14 2769	IL, WB
ATG8A-I Autophagy-related protein 8A-I isoforms	AS14 2811	WB
Calcineurin/EF-hand motif	AS13 2666	WB
CDPK (1,2,3,4,7,8,10,11,14,20,25,30,32) Calcium-dependent protein kinase	AS13 2754	WB
CNX1/2 CALNEXIN HOMOLOG 1/2	AS12 2365	WB
COI1 Coronate insensitive 1 (rabbit antibody)	AS12 2637	WB
CPK-EF Calcium-dependent protein kinase EF domain	AS11 1807	WB
CPN60A1 Chaperonin 60 subunit alpha 1, chloroplastic	AS12 2613	WB
DRP5B Dynamin related protein 5B	AS12 2634	WB
FIE Fertilization-independent endosperm	AS12 2616	WB
GID2 F-BOX protein GID2 (SLEEPY 1)	AS13 2638	WB
GN Gnom	AS16 3980	WB
GPA1 Guanine nucleotide-binding protein subunit alpha 1	AS16 3939	WB
GPA1 Guanine nucleotide-binding protein subunit alpha 1 (affinity purified)	AS12 2370	WB
HXK1 Hexokinase 1	AS12 2601	WB
HY1 Heme Oxygenase 1	AS12 2636	WB
HXK1 Hexokinase 1 (<i>Chlamydomonas</i>)	AS16 4083	WB
KrP Kelch repeat-containing protein / galactose oxidase (At3g07720)	AS14 2764	WB
LFY Leafy	AS16 3990	WB
LSD1 Lesion simulating disease 1 (chicken antibody)	AS12 2104	WB
LSD1 Lesion simulating disease 1 (rabbit antibody)	AS13 2746	WB
MKKK18 Mitogen-activated protein kinase 18	AS13 2673	WB
MPK6 Mitogen-activated protein kinase 6	AS12 2633	WB
MKK2 Mitogen-activated protein kinase kinase 2	AS15 2905	WB
MYC2 Transcription factor MYC2	AS12 1869	WB
NRT1.1 Nitrate transporter 1.1	AS12 2611	IL, WB

Developmental biology – Signal transduction

Product name.....	Product number	Applications
NRT2.1 Nitrate transporter 2.1.....	AS12 2612	WB
OLE1 Oleosin 18.5 kDa.....	AS20 4412	IL, WB
Phosphothreonine.....	AS18 4171	IP, IF, ICC, WB
PHOT1 Phototropin-1.....	AS10 720	WB
PHOT2 Phototropin-2.....	AS10 721	WB
PLDA1/2 Phospholipase D alpha 1/2.....	AS12 2364	IL, WB
PP2A Serine/threonine protein phosphatase 2A 59 kDa regulatory subunit B γ	AS13 2747	IL, WB
PPDK Pyruvate orthophosphate dikinase.....	AS13 2647	WB
PR-2 GLU I Class I beta-1,3-glucanase.....	AS07 208	IL, WB
PR-2 Pathogenesis-related protein 2.....	AS12 2366	WB
PR-3 / CHN Class I chitinase.....	AS07 207	IL, IP, WB
PR-4 Pathogenesis-related protein 4 (<i>Arabidopsis thaliana</i>).....	AS12 2369	WB
PR-5 Pathogenesis-related protein 5 (<i>Arabidopsis thaliana</i>).....	AS12 2373	WB
P-Tyr Phosphotyrosine.....	AS10 705	IF, IHC, IP, WB
PSY Phytoene synthase.....	AS16 3991	WB
RACK1A Receptor for activated C kinase 1A.....	AS11 1810	WB
RCD1 Radical cell death 1.....	AS12 2602	IP, WB
RE N-terminal arginylation.....	AS15 3050	Dot
SAM1-4 S-adenosylmethionine synthase.....	AS16 3148	WB
SnRK2.2, SnRK2.3, SnRK2.6 Ser/Thr-protein kinase SnRK.....	AS14 2783	WB
SnRK1alpha1 SNF1-related protein kinase catalytic subunit alpha KIN10.....	AS21 4581	WB
SPY Spindly (100 μ g).....	AS13 2637	WB
SRK2E Ser/Thr-protein kinase SnRK2.6.....	AS13 2635	IP, PdA, WB
SUM01 Small ubiquitin-like modifier protein 1.....	AS08 308	WB
SUM03 Small ubiquitin-like modifier protein 3.....	AS08 349	WB
TM2 Tobacco mosaic virus resistance-2.....	AS15 3062	WB
TOC1-P TIMING OF CAB EXPRESSION 1 Arabidopsis clock gene, phosphorylated.....	AS22 4701	WB
TOR Target of rapamycin.....	AS12 2608	WB
TPS1 Trehalose-6-phosphate synthase 1.....	AS12 2635	WB
UAGPase UDP-GlcNAc pyrophosphorylase.....	AS14 2829	WB
UBQ11 Ubiquitin	AS08 307	WB
XLG2 Extra-large G-protein 2.....	AS22 4881	WB

DNA/RNA/cell cycle – Cell cycle

Product name.....	Product number	Applications
AGO, Argonaute set 4 antibodies.....	AS18 4248	WB
ARC5 Dynamin-like protein ARC5.....	AS13 2676	WB
ASY1 Asynapsis 1.....	AS21 4690	WB
ASY1 Asynaptic phenotype protein 1 monoclonal antibody.....	AS08 338	ELISA, WB
CUL1 Cullin-1.....	AS23 4927	WB
Cyc1 Cyclin-B1-1.....	AS19 4339	ELISA, WB
CDC2 Cell-division-cycle kinase 2.....	AS06 153	IL, WB
CENH3 Centromere specific histone H3 variant.....	AS12 2225-100	IHC, WB
DNA Fragmentation Detection Kit (30 slides).....	AS20 4458	ELISA
DNA Fragmentation Detection Kit (60 slides).....	AS20 4459	ELISA
Phly DNA photolyase (At4g25290).....	AS15 2864	WB
Phly DNA photolyase (At4g25290) (N-terminal part).....	AS15 2863	WB
RBR1 Retinoblastoma related protein.....	AS11 1627	IP, WB
Rhodanese/cell cycle control phosphatase superfamily protein.....	AS15 2900	WB

DNA/RNA/cell cycle – Epigenetics/DNA methylation

Product name	Product number	Applications
5-fC 5-formylcytosine	AS16 3165	DIP, ELISA
5-hmC 5-hydroxymethylcytosine (monoclonal)	AS16 3164	DIP, Dot, ELISA
5-hmC 5-hydroxymethylcytosine (polyclonal)	AS16 3166	DIP, Dot, ELISA
5-mC 5-methylcystosine (monoclonal antibody for MeDIP/IF)	AS16 3162	DIP, IF
5-mC 5-methylcystosine (monoclonal)	AS16 3161	Dot, FISH, IF, IP
5-mC 5-methylcystosine (monoclonal, clone 33D3)	AS16 3163	DIP, Dot, IF
Acetylated Lysine	AS15 3018	ICC, IF, IP, WB
Acetylated Lysine (25 µl)	AS10 707-25	ICC, IF, IHC, IP, WB
H2A.XS139p H2A.X phosphorylated serine 139	AS16 3199	Dot, IF, WB
H3 Histone 3 core (monoclonal)	AS16 3197	ChIP, WB
H3 Histone H3 (rabbit antibody)	AS10 710	ChIP-qPCR, ICC, WB
H3 Histone H3 (rabbit antibody, affinity purified)	AS10 710A	ChIP-qPCR, WB
...ALP-conjugated (AS10 710-ALP), Biotin-conjugated (AS10 710B), HRP-conjugated (AS10 710-HRP)		
DyLight® 488-conj. (AS10 710-DL488), DyLight® 594-conj. (AS10 710-DL594), DyLight® 650-conj. (AS10 710-DL650)		
H3K18me1 Histone H3 monomethylated Lys18	AS16 3181	ChIP, Dot, IF, WB
H3K18me2 Histone H3 dimethylated Lys18	AS16 3182	ChIP, Dot, IF, WB
H3K18me3 Histone H3 trimethylated Lys18	AS16 3183	ChIP, Dot, IF, WB
H3K27ac Histone H3 acetylated lysine 27 (ChIP grade)	AS16 3195	ChIP, Dot, IF, PA, WB
H3K27me3 Histone H3, trimethylated lysine 27 (H3K27me3)	AS16 3193	ChIP, Dot, IF, PA, WB
H3K27me3S28p Histone H3 trimethylated Lys27, p Ser28	AS16 3184	ChIP, Dot, IF, WB
H3K36me3 Histone H3 trimethylated lysine 36 (ChIP grade)	AS16 3196	ChIP, Dot, IF, PA, WB
H3K37me1 Histone H3 monomethylated Lys37	AS16 3186	Dot, WB
H3K4me1T6p Histone H3 monomethylated Lys4, p Thr6	AS16 3171	ChIP, Dot, IF, IHC, WB
H3K4me3 Histone H3, trimethylated lysine 4 (H3K4me3)	AS16 3190	ChIP, Dot, IF, PA, WB
H3K4me3T6p H3 trimethylated Lys4, p Thr6	AS16 3172	ChIP, Dot, IF, IHC, WB
H3K56me1 Histone H3 monomethylated Lys56	AS16 3187	ChIP, Dot, IF, WB
H3K56me3 Histone H3 trimethylated Lys56	AS16 3188	ChIP, Dot, IF, WB
H3K9ac Histone H3, acetylated lysine 9	AS16 3198	ChIP, Dot, IF, WB
H3K9me2 Histone H3 dimethylated lysine 9	AS16 3194	ChIP, Dot, IF, WB
H3R17me2(asym) Histone H3 asym-dimethyl Arg17	AS16 3180	ChIP, IF, WB
H3R2me1 Histone H3 monomethylated Arg2	AS16 3167	WB
H3R2me2(sym)K4me2 Histone H3 sym-dimethylated Arg2, dimethyl Lys4	AS16 3185	ChIP, Dot, IF, WB
H3R8me2(asym) Histone H3 asym-dimethylated Arg8	AS16 3177	ChIP, IF, IHC, WB
H3R8me2(sym) H3 Histone 3 sym-dimethylated Arg8	AS16 3178	ChIP, WB
H3S10p Histone H3 p Ser10 (affinity purified)	AS16 3635	ChIP, Dot, IF, WB
H3S10p Histone H3 p Ser10 (serum)	AS16 3636	ChIP, Dot, IF, IP, WB
H3S10pT11p Histone H3 p Ser10, p Thr11	AS16 3179	ChIP, IF, IHC, WB
H3T3pK4ac Histone H3 ac Lys4, p Thr3	AS16 3170	ChIP, Dot, IF, IHC, WB
H3T3pK4me1 Histone H3 p Thr3, monomethylated Lys4	AS16 3168	Dot, IF, IHC, WB
H3T3pK4me2 Histone H3 dimethylated Lys4, p Thr3	AS16 3169	ChIP, IF, IHC, WB
H3T6p Histone H3 p Thr6	AS16 3173	ChIP, Dot, IF, IHC, WB
H3T6pK9me1 Histone H3 methylated at Lys9 (K9)	AS16 3174	ChIP, Dot, IF, IHC, WB
H3T6pK9me2 Histone H3 dimethylated Lys9, p Thr6	AS16 3175	ChIP, IF, IHC, WB
H3T6pK9me3 Histone H3 trimethylated Lys9, p Thr6	AS16 3176	ChIP, Dot, IF, IHC, WB
H4K16ac Histone H4 acetylated Lys16	AS16 3189	ChIP, Dot, IF, IHC, WB
Methylated Lysine	AS15 3021	ELISA, IHC, IP, WB
m6A N6-methyladenosine (monoclonal)	AS17 4120	Dot, RIP
m6A N6-methyladenosine (polyclonal)	AS17 4121	Dot



Search antibody by species: www.agrisera.com/search-by-species

DNA/RNA/cell cycle – Nuclear signaling

Product name	Product number	Applications
H8-Hydroxyguanosine DNA/RNA oxidative damage	AS10 708-100	AP, ELISA, IHC-Fr-P
H1 Histone H1	AS11 1801	ICC, WB
H3 Histone H3 (affinity purified)	AS10 710A	ChIp-qPCR, WB
...ALP-conjugated (AS10 710-ALP), Biotin-conjugated (AS10 710B), HRP-conjugated (AS10 710-HRP)		
DyLight® 488-conj. (AS10 710-DL488), DyLight® 594-conj. (AS10 710-DL594), DyLight® 650-conj. (AS10 710-DL650)		
H3 Histone H3 (chicken antibody)	AS15 2855	WB
H3 Histone H3 (rabbit antibody)	AS10 710	ChIp-qPCR, ICC, WB
HDT1 Histone deacetylase	AS11 1792	WB
HDT3 Histone deacetylase HDT3	AS16 3968	IP, WB
HTA9 Probable histone H2A variant 3	AS10 718	WB
HTR12 Histone H3-like centromeric protein	AS12 2226-100	ELISA, IHC, WB
LexA SOS function regulatory protein	AS12 2614	WB
PARP2 Poly [ADP-ribose] polymerase 2	AS16 3838	WB
PEL1 Pelota	AS11 1798	WB
SUN1,2 (nuclear envelope protein) (<i>Arabidopsis thaliana</i>)	AS15 2856	WB

DNA/RNA/cell cycle – Plant RNA

Product name	Product number	Applications
AGO, Argonaute set 4 antibodies	AS18 4248	WB
AGO1 Argonaute 1	AS09 527	WB
...ALP-conjugated (AS09 527-ALP), Biotin-conjugated (AS09 527B), HRP-conjugated (AS09 527-HRP)		
DyLight® 488-conj. (AS09 527-DL488), DyLight® 594-conj. (AS09 527-DL594), DyLight® 650-conj. (AS09 527-DL650)		
AGO1 Argonaute 1 (<i>Chlamydomonas</i>)	AS14 2776	WB
AGO10 Argonaute 10	AS15 3071	WB
AGO2 Argonaute 2	AS13 2682	WB
AGO4 Argonaute 4	AS09 617	ICC, IP, WB
AGO5 Argonaute 5	AS10 671	IP, WB
AGO6 Argonaute 6	AS10 672	WB
AGO9 Argonaute 9	AS10 673	IP, WB
AGO1-PAZ Argonaute 1 PAZ domain (<i>Chlamydomonas</i>)	AS14 2797	WB
CBP20 Nuclear cap-binding protein subunit 2	AS09 530	IP, WB
CBP80 Nuclear cap-binding protein subunit 1	AS09 531	RIP, WB
CCS Chloroplastic copper chaperone for SOD	AS07 219	WB
CSD2 Chloroplastic Cu/Zn superoxide dismutase	AS06 170	WB
DCL3 Dicer-like protein 3	AS12 2103	WB
DCL5 Zea mays Dicer-like 102	AS22 4722	WB
HEN1 HUA ENHANCER 1	AS15 3095	WB
HYL1 Hyponastic leave phenotype ds-RNA binding protein	AS06 136	RIP, WB
PELOTA Protein pelota homolog	AS16 3984	WB
SE Serrate RNA effector molecule (rabbit antibody)	AS09 532A	IL, RIP, WB
SE Serrate RNA effector molecule (chicken antibody)	AS15 2836	WB

Product highlight

Product #: AS18 4248

AGO, Argonaute set | 4 antibodies

This set contains:

- Four Anti-AGO antibodies of your choice
- Matching secondary antibody, HRP-conjugated (AS09 602-trial)
- Chemiluminescent reagent, femtogram detection range (AS16 ECL-S-10)



DNA/RNA/cell cycle – RNA metabolism

Product name	Product number	Applications
PRP39a Pre-mRNA-processing factor 39	AS14 2784	WB
PRP40B Pre-mRNA-processing protein 40B	AS14 2785	WB
U1 snRNP protein A U1 small nuclear ribonucleoprotein A	AS14 2777	WB

DNA/RNA/cell cycle – Transcription regulation

Product name	Product number	Applications
A12.2 RNA polymerase I subunit (homolog of Pol II Rpb9)	AS07 225	WB
Acetylated Lysine	AS15 3018	ICC, IF, IP, WB
ARP6 Actin-related protein 6 (clone 12A2.A3.C2)	AS20 4507-1ml	ELISA, IF, WB
ARP8 Actin-related protein 8, (clone 12F5.D4.C3), C-Terminal	AS20 4510-1ml	ELISA, ICC, IF, WB
ARP8 Actin-related protein 8, (clone 13F10.A4.G6), N-Terminal	AS20 4509-1ml	ELISA, ICC, IF, WB
CO Constans (chicken antibody)	AS16 3958	WB
CO Constans (goat antibody)	AS16 3160	WB
DCL2 Dicer-like protein 2	AS15 3100	WB
DRB4 Double-stranded RNA-binding protein 4	AS15 3104	WB
GI Gigantea	AS12 1864A	WB
HDA6 Histone deacetylase 6	AS14 2787	WB
KUA1 MYB transcription factor	AS15 2989	WB
LUX Transcription factor LUX	AS16 4106	WB
Methylated Lysine	AS15 3021	ELISA, WB, IHC, IP
MLP3.6 protein Transcription factor jumonji (JmjC) domain-containing prot	AS13 2679	WB
PHR1 Phosphate starvation response 1 (monocots)	AS18 4222	WB
PIF3 Phytochrome interacting factor 3 (goat antibody)	AS16 3954	WB
PIF4 Phytochrome interacting factor 4 (goat antibody)	AS16 3955	WB
PIF4 Phytochrome interacting factor 4 (rabbit antibody)	AS16 3157	WB
PIF5 Phytochrome interacting factor 5	AS12 2112	WB
RDR2 RNA-dependent RNA polymerase 2	AS15 3097	IP, WB
RDR6 RNA-dependent RNA polymerase 6	AS15 3098	IP, WB
RPB1 RNA polymerase II subunit B1	AS11 1804	IP
RpoA RNA polymerase alpha subunit (chloroplast)	AS15 2866	WB
SGS3 Protein suppressor of gene silencing 3	AS15 3099	WB
SiR Sulfite reductase [ferredoxin], chloroplastic	AS20 4424	ELISA, WB
SOC1 Suppressor of constans overexpression 1	AS12 1856	WB
STM Homeobox protein SHOOT MERISTEMLESS	AS11 1764	WB
TOP2 DNA topoisomerase II	AS05 096	IL, WB
TGA1 TGACG motif-binding factor 1, bZIP transcription factor	AS16 3208	WB
TPL Transcription factor TOPLESS (rabbit antibody)	AS16 3207	WB
U1 snRNP protein A U1 small nuclear ribonucleoprotein A	AS14 2777	WB
WUS WUSCHEL protein	AS11 1759	WB
RPB2 DNA-directed RNA polymerase II subunit 2	AS20 4376	WB



Publication record: www.agrisera.com/publication-record

DNA/RNA/cell cycle – Translation

Product name	Product number	Applications
Acetylated Lysine (monoclonal)	AS10 707-100	ICC, IHC, IP, WB
Acetylated Lysine (polyclonal)	AS15 3018	ICC, IF, IP, WB
CSP41b Ribosome associated endonuclease (CRB)	AS08 298	WB
eEF1a Elongation factor 1-alpha	AS10 934	WB
eEF1b Elongation factor 1-beta	AS07 265	WB
eEF1B-alpha1 an 2 Elongation factor 1B-alpha 1 and 1B-alpha 2	AS10 678	WB
eEF1B-alpha2 Elongation factor 1B-alpha 2	AS10 679	WB
eEF1B-beta1 and 2 Elongation factor 1-beta1 and 1-beta2	AS10 677	WB
eEF1B-gamma1 and 2 Elongation factor 1-gamma 1 and 2	AS10 676	WB
EF1A Elongation factor 1-alpha / EF-1-alpha	AS11 1633	WB
EF-G1 Elongation factor G1	AS13 2652	WB
eIF1 Eukaryotic initiation factor eIF1	AS19 4253	WB
eIF2-alpha Eukaryotic translation initiation factor 2 subunit alpha	AS20 4371	WB
eIF2-alpha-P Phosphoryl. Eukaryotic transl. init. factor 2 subunit alpha	AS20 4447	WB
eIF4A Eukaryotic initiation factor eIF4A	AS19 4251	WB
eIF5 Eukaryotic initiation factor eIF5	AS19 4252	WB
L7/L12 Ribosomal protein	AS08 331	WB
L13-1 60S ribosomal protein L13-1	AS13 2650	WB
L16 Mitochondrial ribosomal large subunit protein L16	AS15 3069	WB
L32 50S ribosomal protein L32 (chloroplatic)	AS22 4864	WB
Methylated Lysine, APC conjugated	AS15 3022	ELISA, IHC, IP, WB
Methylated Lysine, FITC conjugated	AS15 3023	ELISA, IHC, IP, WB
NAB1 nucleic acid binding protein 1, Chlamydomonas	AS23 4921	WB
RD N-terminal arginylation	AS15 3050A	Dot
RE N-terminal arginylation	AS15 3050	Dot
RPL1 50S ribosomal protein L1	AS11 1738	WB
RPL4 ribosomal protein L4 (chloroplatic)	AS22 4787	WB
RPL33 50S ribosomal protein L33 (chloroplatic)	AS16 4082	WB
RPL37 Ribosomal protein L37 (cytoplasmic)	AS12 2115	WB
RPS1 30S ribosomal protein S1	AS08 309	WB
RPS12 Ribosomal protein S12 (chloroplatic)	AS12 2114	WB
RPS14 40S ribosomal protein S14-1	AS12 2111	WB
RPS14 Ribosomal protein S14 (mitochondrial)	AS16 4094	WB
RPS15 30S ribosomal protein S15, chloroplatic	AS14 2779	WB
RPS6A 40S ribosomal protein S6-1	AS19 4292	WB
RPS6A-P Phosphorylated (Ser240) 40S ribosomal protein S6-1	AS19 4302	WB
RPS6A-P237 Phosphorylated (Ser237) 40S ribosomal protein S6-1	AS19 4291	WB
S10 Mitochondrial ribosomal small subunit protein S10	AS15 3067	WB
S4 Mitochondrial ribosomal small subunit protein S4	AS15 3068	WB
S6K1/2 Ribosomal S6 kinase 1/2	AS12 1855	WB
S6K1-2 Ribosomal-protein S6 kinase homolog 1,2 - phosphorylated	AS13 2664	WB

Environmental stress – Cold stress

Product name	Product number	Applications
ClpB1 Chaperone protein ClpB1 (cyanobacterial)	AS16 4039	WB
ClpB2 Chaperone protein ClpB2 (cyanobacterial)	AS16 4040	WB
COR14b Cor14b-encoded cold regulated protein	AS06 169	WB
CPT6 Cis-prenyltransferase 6	AS14 2768	WB
Enolase	AS10 651	WB
ERD7 Early Response to Dehydration 7	AS19 4317	WB
GORK Potassium channel GORK	AS14 2795	WB
LEA4-5 Late embryogenesis abundant protein 4-5	AS13 2758	WB
LEA4-5 Late embryogenesis abundant protein 4-5 (affinity purified)	AS13 2758A	WB
LEA6-3 Late embryogenesis abundant protein 6-3	AS13 2756	WB
S6K1-2 Ribosomal-protein S6 kinase homolog 1,2 - phosphorylated	AS13 2664	WB
SUS1 Sucrose synthase 1	AS15 2830	WB

Environmental stress – Drought stress

Product name	Product number	Applications
AHB2 Hemoglobin 2	AS13 2745	WB
AP24 Osmotin, AP24	AS19 4336	ELISA, WB
ATG5 Autophagy-related protein 5	AS15 3060	WB
ATG8 Autophagy-related protein	AS14 2769	IL, WB
Cat Catalase (peroxisomal marker)	AS09 501	WB
CL03 Caleosin-3	AS20 4418	WB
Dehydrin	AS07 206	WB
Dehydrin (affinity purified)	AS07 206A	WB
Dehydrin ERD10	AS16 4101	SPR
EIN2 Ethylene insensitive 2	AS12 1865	WB
ERD7 Early Response to Dehydration 7	AS19 4317	WB
FAAH Fatty acid amide hydrolase	AS16 3972	WB
GLDH Galactono-1,4 lactone dehydrogenase	AS06 182	WB
GLN1 GLN2 GS1 GS2 glutamine synthetase global antibody	AS08 295	WB
GLN2 GS2, chloroplastic form of glutamine synthetase	AS08 296	WB
GORK Potassium channel GORK	AS14 2795	WB
ICE1 Inducer of CBF expression 1	AS16 3971	WB
LEA4-2 Late embryogenesis abundant protein 4-2	AS22 4807	WB
LEA4-25 Group 4-late embryogenesis abundant protein	AS13 2757	WB
LEA4-5 Late embryogenesis abundant protein 4-5	AS13 2758	WB
LEA4-5 Late embryogenesis abundant protein 4-5 (affinity purified)	AS13 2758A	WB
LEA4-5 (1-77) Late embryogenesis abundant protein LEA4-5 (N-terminal)	AS22 4830	WB
LEA4-5 (78-158) Late embryogenesis abundant protein 4-5 (C-terminal)	AS22 4831	WB
LEA6 Late embryogenesis abundant protein 6	AS21 4596	WB
LEA6-1 Late embryogenesis abundant protein LEA6-1	AS22 4836	WB
LEA6-3 Late embryogenesis abundant protein 6-3	AS13 2756	WB
LOX Lipoxygenase	AS06 128	WB
LOX Lipoxygenase (affinity purified)	AS06 128A	WB
LOX-C Lipoxygenase (chloroplastic)	AS07 258	WB
PDF1 Plant defensin 1	AS16 3973	WB
PIP2-1-7 Plasma membrane aquaporin isoforms 1-7 (C-terminal)	AS12 2110	WB
PR-1 Pathogenesis-related protein 1	AS10 687	WB
SAM1-4 S-adenosylmethionine synthase	AS16 3148	WB
SUS1 Sucrose synthase 1	AS15 2830	WB
ZEP Zeaxanthin Epoxidase	AS15 3092	WB

Environmental stress – Heat shock

Product name	Product number	Applications
ABI2 Abscisic acid insensitive 2	AS12 1871	WB
ACD Alpha crystalline domain of sHSP	AS15 3029	WB
AHB2 Hemoglobin 2	AS13 2745	WB
ATPase AAA2 domain	AS11 1754	WB
CDJ1 Chloroplast DnaJ homolog 1	AS06 179	IP, WB
CGE1 Alfa-CGE1, chloroplastic GrpE homolog	AS06 176	IP, WB
ClpB-P ClpB3	AS09 459	WB
DnaJ Prokaryotic heat shock protein	AS07 271	WB
DnaK Chloroplast stromal chaperone	AS07 270	WB
DnaK2 Heat shock protein 70-2 (HSP70-2)	AS08 350	WB
EIN2 Ethylene insensitive 2	AS12 1865	WB
HSF1 Heat shock factor 1	AS06 178	WB
HSP101 ClpB heat shock protein, C-terminal	AS08 287	WB
HSP101 ClpB heat shock protein, N-terminal (rabbit antibody)	AS07 253	WB
HSP101 ClpB heat shock protein, N-terminal (chicken antibody)	AS08 283	WB
HSP101 Nuclear/cytoplasmatic heat shock protein	AS08 290	WB

Environmental stress – Heat shock

Product name	Product number	Applications
HSP16.6 Class I heat shock protein 16.6 (cytosolic)	AS08 286	WB
HSP17.6 Cytosolic class I heat shock protein 17.6 (rabbit antibody)	AS07 254	WB
HSP17.6 Cytosolic class I heat shock protein 17.6 (chicken antibody)	AS08 284	WB
HSP17.7 Cytosolic class II heat shock protein 17.7	AS07 255	WB
HSP18.5 Class IV heat shock protein	AS11 1628	WB
HSP21 Chloroplastic heat shock protein	AS08 285	WB
HSP23.5 Heat shock protein 23.5 (mitochondrial)	AS21 4524	WB
HSP23.6 Heat shock protein 23.6 (mitochondrial)	AS15 2980	WB
HSP26.5 Heat shock protein 26.5 (mitochondrial)	AS15 2981	WB
HSP70 Heat shock protein 70 (cytoplasmic)	AS08 371	IP, WB
HSP70 Heat shock protein 70 (chloroplastic)	AS08 348	IP, WB
HSP70 Heat shock protein 70 (mitochondrial)	AS08 347	WB
HSP70B Stromal alfa-HSP70	AS06 175	IP, WB
HSP90-1 Heat shock protein 90-1	AS08 346	WB
HSP90-2 Heat shock protein 90-2	AS11 1629	WB
HSP90C Alfa-HSP90C, heat shock protein	AS06 174	IP, WB
slr0156 ATP-dependent chaperone clpB	AS08 355	WB
slr1641 ATP-dependent chaperone clpB	AS08 344	WB

Environmental stress – Heavy metal stress

Product name	Product number	Applications
ALD Fructose-1,6 biphosphate aldolase	AS08 294	WB
APX L-ascorbate peroxidase	AS08 368	WB
CCS Chloroplastic copper chaperone for SOD	AS07 219	WB
CSD2 Chloroplastic Cu/Zn superoxide dismutase	AS06 170	WB
Cu/ZnSOD Cu/Zn superoxide dismutase (chicken antibody)	AS10 652	WB
Cu/ZnSOD Cu/Zn superoxide dismutase (rabbit antibody)	AS18 4243	WB
FeSOD Chloroplastic Fe-dependent superoxide dismutase	AS06 125	WB
Gamma-glutamyl-cysteine	AS11 1811	ICC, IG
GPX Glutathione peroxidase, chloroplastic	AS04 055	ELISA, WB
GR Glutathione reductase	AS06 181	IL, IP, WB
IRT1 Iron regulated transporter 1	AS11 1780	WB
KrP Kelch repeat-containing protein / galactose oxidase (At3g07720)	AS14 2764	WB
LOX Lipoxygenase	AS06 128	WB
LOX Lipoxygenase (affinity purified)	AS06 128A	WB
LOX-C Lipoxygenase, chloroplastic	AS07 258	WB
MerA Mercuric Ion Reductase (clone 10A9)	AS16 3145-1ml	ELISA
MerB Organomercurial Lyase (clone 10E2)	AS16 3146-1ml	WB
MnSOD Manganese superoxide dismutase	AS09 524	WB
MT1a Metallothionein type1	AS13 2684	IL, WB
MT2a Metallothionein 2a	AS13 2685	IL, WB
NtrC Thioredoxin reductase (TR/TRxR)	AS06 159	WB
NtrC Thioredoxin reductase (TR/TRxR)	AS07 243	WB
RGA DELLA protein RGA	AS11 1630	WB
SUS1 Sucrose synthase 1	AS15 2830	WB
ZCP1 Zinc Chaperone Protein	AS14 2770	WB
ZCP2 Zinc Chaperone Protein	AS12 1848	WB

Environmental stress – Hypoxia

Product name	Product number	Applications
ADH Alcohol dehydrogenase (hypoxia marker)	AS10 685	WB
ADH/ALDH Alcohol/acetaldehyde dehydrogenase (bacterial/algae)	AS10 748	WB
PDC Pyruvate decarboxylase	AS10 691	WB
Sub1C Submergence-1C	AS11 1770	WB
SUS1 Sucrose synthase 1	AS15 2830	WB

Environmental stress – Oxidative stress

Product name	Product number	Applications
3-nitroY Nitrotyrosine	AS10 706-100	ELISA, IHC, IP, WB
AAO L-ascorbate oxidase	AS19 4337	ELISA, WB
ACO1 Aconitase	AS09 521	WB
AHB2 Hemoglobin 2	AS13 2745	WB
ANN-1 Annexin-1	AS18 4166	WB
AO Ascorbate oxidase	AS09 384	ELISA, IHC, WB
AO Ascorbate oxidase, Biotin conjugated	AS09 383	ELISA, WB
AOX1 Alternative oxidase 1	AS06 152	WB
AOX1/2 Plant alternative oxidase 1 and 2	AS04 054	IL, WB
AOX2 Plant alternative oxidase 2	AS21 4532	WB
APX L-ascorbate peroxidase	AS08 368	WB
ATG4 Autophagy protein 4	AS15 2831	WB
cAPX Ascorbate peroxidase (cytosolic)	AS23 4940	WB
Cat Catalase (algal antibody)	AS15 2991	WB
Cat2 Catalase-2	AS21 4531	WB
CCS Chloroplastic copper chaperone for SOD	AS07 219	WB
CSD1 Cu/Zn superoxide dismutase 1 (cytosolic)	AS22 4842	WB
Cu/ZnSOD Cu/Zn superoxide dismutase	AS10 652	WB
DHAR1 Dehydroascorbate Reductase 1	AS11 1746	WB
DHAR2 Dehydroascorbate Reductase 2	AS11 1747	WB
DMPO DMPO nitron adduct	AS11 1632	ICC, IP, IT, WB
EDS1 Enhanced disease susceptibility 1	AS13 2751	WB
FeSOD Chloroplastic Fe-dependent superoxide dismutase	AS06 125	WB
Gamma-ECS Gamma glutamylcysteine synthase	AS06 186	IL, WB
Gamma-glutamyl-cysteine	AS11 1811	ICC, IG
GDP-L-Galactose phosphorylase	AS10 723	WB
GH Gamma-glutamyl hydrolase	AS19 4347	ELISA, WB
GOX Glycolate oxidase 1,2,3	AS14 2772	WB
GPX Glutathione peroxidase (chloroplastic)	AS04 055	ELISA, WB
GR Glutathione reductase	AS06 181	IL, IP, WB
Grx5 Monothiol glutaredoxin-S5	AS15 3108	WB
GS Glutathione synthase, GSH-S	AS06 183	IL, WB
HRP Horseradish peroxidase	AS16 3951	ELISA, WB
HRP Horseradish peroxidase (mouse monoclonal) (clone HP-03)	AS21 4617	ELISA, ICC, WB
KatG Catalase peroxidase (HPI), Cyanobacterial	AS08 374	WB
MC4 Metacaspase-4	AS19 4318	WB
MnSOD Manganese superoxide dismutase	AS09 524	WB
MnSOD3 Superoxide dismutase (Algal)	AS21 4523	WB
NBR1 Autophagy substrate NBR1 (affinity purified)	AS14 2805A	WB
Nitrotyrosine (mouse monoclonal) (clone EM-30)	AS21 4622	IHC, WB
PrxQ Peroxiredoxin, thioredoxin reductase	AS05 093	WB
PsbA D1 protein of PSII, C-terminal	AS05 084	WB
RB0HD Respiratory burst oxidase homolog protein D	AS15 2962	WB
RGA DELLA protein RGA	AS11 1630	WB
GrxS3,4,5 Monothiol glutaredoxin-S3, S4, S5	AS13 2703	WB
Oxidative Stress Antibodies Set 5 antibodies	AS19 4294	WB

Environmental stress – Pathogen attack

Product name	Product number	Applications
AG02 Argonaute 2	AS13 2682	WB
ATG4 Autophagy protein 4	AS15 2831	WB
ATG7 Ubiquitin-like modifier-activating enzyme atg7	AS15 3061	WB
ATG5 Autophagy-related protein 5	AS15 3060	WB
ATG8 Autophagy-related protein	AS14 2769	IL, WB
BIK1 Botrytis-induced kinase 1	AS16 4030	WB
CALS12/PMR4 Callose synthase 12	AS21 4567	WB
CERK1 Chitin elicitor receptor kinase 1	AS16 4037	WB
COI1 Coronate insensitive 1 (rabbit antibody)	AS12 2637	WB
Cp2 Cysteine protease	AS16 3110	WB
CPK-EF Calcium-dependent protein kinase EF domain	AS11 1807	WB
EDS1 Enhanced disease susceptibility 1	AS13 2751	WB
EIN2 Ethylene insensitive 2	AS12 1865	WB
FLS2 Flagellin-sensitive 2	AS12 1857	WB
GOX Glycolate oxidase 1,2,3	AS14 2772	WB
HRP Horseradish peroxidase	AS16 3951	ELISA, WB
NBR1 Autophagy substrate NBR1	AS14 2805	WB
NBR1 Autophagy substrate NBR1 (affinity purified)	AS14 2805A	WB
NPR1 Nonexpresser of PR genes 1	AS12 1854	WB
OLE2 Oleosin 21.2 kDa	AS20 4411	WB
PAL 1-4 Phenylalanine ammonia-lyase 1-4	AS21 4614	WB
Patatin	AS12 1842	IP, IL, WB
Patatin (affinity purified)	AS12 1842A	IP, IL, WB
PBP1 PYK10-binding protein 1 (C-terminal)	AS20 4413	IF, WB
PBP1 PYK10-binding protein 1 (N-terminal)	AS20 4414	IF, WB
PDLP1 Plasmodesmata-located protein 1	AS21 4610	WB
PDR8 ABC transporter G family member 36	AS22 4846	WB
PP2A Serine/threonine prot. phosphatase 2A 59 kDa reg. subunit B' gamma iso.	AS13 2747	IL, WB
PR-1 Pathogenesis-related protein 1	AS10 687	WB
PR-2 GLU I Class I beta-1,3-glucanase	AS07 208	IL, WB
PR-2 Pathogenesis-related protein 2	AS12 2366	WB
PR-3 / CHN Class I chitinase	AS07 207	IL, IP, WB
PR-4 Pathogenesis-related protein 4 (<i>Arabidopsis thaliana</i>)	AS12 2369	WB
PR-5 Pathogenesis-related protein 5 (<i>Arabidopsis thaliana</i>)	AS12 2373	WB
PRN2 Pirin-like protein	AS14 2794	WB
PROPEP1 (cleaved and matured)	AS15 3070	WB
RPS4 Disease resistance protein RPS4	AS16 3992	WB
RTA Ricin toxic A chain	AS17 4143	ELISA
RTB Ricin toxic B chain	AS17 4144	ELISA
SAM1-4 S-adenosylmethionine synthase	AS16 3148	WB
SYP121 Syntaxin 121	AS22 4827	WB
TM2 Tobacco mosaic virus resistance-2	AS15 3062	WB
UBQ11 Ubiquitin	AS08 307	WB
UBQ11 Ubiquitin (affinity purified)	AS08 307A	WB

Product highlight

Product #: [AS19 4294](#)

Oxidative Stress Antibodies Set | 5 antibodies

This set contains:

- Five oxidative stress-related antibodies of your choice
- Matching secondary antibody, HRP-conjugated (AS09 602-trial)
- Chemiluminescent reagent, low pico to mid femtogram detection (AS16 ECL-N-10)

**APX | Cat | Cu/ZnSOD | FeSOD
HRP | Gamma-ECS | GR | GS
MnSOD | RBOHD**

Environmental stress – Salt stress

Product name	Product number	Applications
AC01 Aconitase	AS09 521	WB
AG01 Argonate 1 Blocking peptide	AS09 527P	NeA
ALD Fructose-1,6 bisphosphate aldolase	AS08 294	WB
EIN2 Ethylene insensitive 2	AS12 1865	WB
FAAH Fatty acid amide hydrolase	AS16 3972	WB
GAI DELLA protein GAI	AS11 1631	WB
GORK Potassium channel GORK	AS14 2795	WB
H+ATPase Plasma membrane H+ATPase	AS07 260	IF, IL, WB
...ALP-conjugated (AS07 260-ALP), Biotin-conjugated (AS07 260B), HRP-conjugated (AS07 260-HRP)		
DyLight®488-conj. (AS07 260-DL488), DyLight®594-conj. (AS07 260-DL594), DyLight®650-conj. (AS07 260-DL650)		
ICE1 Inducer of CBF expression 1	AS16 3971	WB
MKK2 Mitogen-activated protein kinase kinase 2	AS15 2905	WB
Na+/H+ antiporter, sodium/hydrogen exchanger	AS09 484	ELISA, WB
PDF1 Plant defensin 1	AS16 3973	WB
PIP2-1-7 Plasma membrane aquaporin isoforms 1-7 (C-terminal)	AS12 2110	WB
RGL2 RGA-like protein 2 (DELLA protein)	AS11 1803	WB
SAL1 Sal1 phosphatase	AS07 256	WB
SAM1-4 S-adenosylmethionine synthase	AS16 3148	WB
V-ATPase Epsilon subunit of tonoplast H+ATPase (rabbit antibody)	AS07 213	IF, IHC, WB
V-ATPase Epsilon subunit of tonoplast H+ATPase (goat antibody)	AS09 577	WB
V-ATPase Epsilon subunit of tonoplast H+ATPase (affinity purified, goat antibody)	AS09 577A	IF, WB

Environmental stress – UV radiation

Product name	Product number	Applications
Phly DNA photolyase (At4g25290)	AS15 2864	WB
Phly DNA photolyase (At4g25290) (N-terminal part)	AS15 2863	WB
UVR3 Protein UV repair defective 3	AS16 4069	WB
UVR8 Ultraviolet-B receptor UVR8	AS22 4716	WB

Environmental stress – Wounding

Product name	Product number	Applications
AHB2 Hemoglobin 2	AS13 2745	WB
COI1 Coronate insensitive 1 (rabbit antibody)	AS12 2637	WB
GSNOR S-nitrosoglutathione reductase	AS09 647	WB
HRP Horseradish peroxidase	AS16 3951	ELISA, WB
MC4 Metacaspase-4	AS19 4318	WB
PPO Polyphenol oxidase	AS10 1585	WB
VSP Vegetative storage protein 1	AS21 4522	WB



Search antibody by species: www.agrisera.com/search-by-species

Fermentation

Product name	Product number	Applications
ADH/ALDH Alcohol/acetaldehyde dehydrogenase (bacterial/algal)	AS10 748	WB
FMR Fumarate reductase	AS12 2618	WB
HydA Iron-hydrogenase HydA1/HydA2	AS09 514	WB
HydA2 Iron-hydrogenase HydA2	AS09 600	WB
MME4 Malic enzyme	AS12 2617	WB
PTA Phosphate acetyltransferase	AS07 276	WB

Food proteins/Allergens

Product name	Product number	Applications
Acrylamid Prop-2-enamide	AS13 2732	IAC
Ahy-3 Arachin Ahy-3	AS19 4343	ELISA
ALTA1 Major allergen Alt a1	AS19 4332	ELISA
Api g1 Major allergen Api g1, isoallergen 2	AS19 4335	ELISA
Ara h1, clone 17	AS16 3977	ELISA
Ara h6 Conglutin allergen Ara h6	AS19 4342	ELISA
Bromelain	AS09 552	ELISA, IF, IHC, WB
Cha o2 Major pollen allergen Cha o2	AS19 4344	ELISA
Conglutin gamma Lupin-specific globulin	AS08 335	WB
Cry j2 Major pollen allergen Cry j2	AS19 4338	ELISA
Dac g3 Pollen allergen Dac g3	AS19 4334	ELISA
Dac g4 Major pollen allergen Dac g4	AS19 4333	ELISA
Gad c1 Allergen Gad c1	AS19 4341	ELISA
LOLPIB Major pollen allergen Lol p5a	AS19 4346	ELISA
OLE9 Major pollen allergen Ole e9	AS19 4348	ELISA, WB
Omega-gliadin (Fragment)	AS19 4340	ELISA
Peanut protein	AS09 566	ELISA, WB
PPI Papain	AS09 545	ELISA, IF, IHC, WB
Ricin (RTA subunit), clone MMA	AS09 648	ELISA, IHC
Ricin (whole molecule), clone MMH	AS09 649	ELISA, IHC
Soy protein	AS09 569	ELISA, WB
Soy protein, HRP conjugated	AS20 4449	ELISA, WB
Sporamin	AS10 697	WB
Wheat gliadin	AS19 4331	ELISA, WB
Wheat gluten	AS09 571	ELISA, WB

Product highlight

Product #: AS08 300

1 | PEB (4x) | protein extraction buffer

Extraction buffer for quantitative isolation of total soluble/membrane protein from plant tissue and algal/bacterial cells, optimized for subsequent western blot detection in denatured conditions.



Hormones – Abscisic acid

Product name	Product number	Applications
14-3-3 GRF General regulatory element	AS12 2119	WB
ABA Abscisic acid (C1) (for IL)	AS09 446	IF, IL
ABA Abscisic acid ELISA quantitation kit	AS20 4392	ELISA
ABF3 Abscisic acid-insensitive 5-like 6	AS13 2639	WB
ABI5 Abscisic acid insensitive 5 (protein)	AS19 4272	WB
ABI2 Abscisic acid insensitive 2	AS12 1871	WB
ABI1 Abscisic acid insensitive 1	AS12 1861	IP, WB
ABI5 Abscisic acid insensitive 5	AS12 1863	IL, WB
MYC2 Transcription factor MYC2	AS12 1869	WB
PYR1 Abscisic acid receptor RCAR11	AS13 2634	WB
SnRK2.2, SnRK2.3, SnRK2.6 Ser/Thr-protein kinase SnRK	AS14 2783	WB
SRK2E Ser/Thr-protein kinase SnRK2.6	AS13 2635	IP, PdA, WB
VP1 Viviparous 1 (ABI3)	AS13 2636	WB

Hormones – Auxins

Product name	Product number	Applications
ABP1 Auxin-binding protein 1	AS16 3950	IL, WB
ABP1 Auxin-binding protein 1 (tomato)	AS16 3945	WB
ABP4 Auxin-binding protein 4 (maize)	AS16 3947	WB
AUX1 Auxin transporter protein 1 (rabbit antibody)	AS16 3159	WB
AUX1 Auxin transporter protein 1 (goat antibody)	AS16 3957	WB, IL
CHS Chalcone synthase	AS12 2615	WB
IAA Auxin ELISA quantitation kit	AS11 1749	WB
IAA Indole 3 acetic acid	AS06 193	ELISA, IL
IAA Indole-3-acetic acid (C1') (for IL)	AS09 445	IL
IAA Indole-3-acetic acid (N1) (for IL)	AS09 421	IL
IBA Indole-3-butyric acid (chicken antibody)	AS15 3053	ELISA, IAC
PIF4 Phytochrome interacting factor 4 (goat antibody)	AS16 3955	WB
PIF4 Phytochrome interacting factor 4 (rabbit antibody)	AS16 3157	WB

Hormones – Biosynthesis/regulation

Product name	Product number	Applications
ABF3 Abscisic acid-insensitive 5-like 6	AS13 2639	WB
ABP1 Auxin-binding protein 1	AS16 3948	WB
ACC 1-Aminocyclopropane-1-carboxylic acid	AS11 1800	IG
ACC synthase 7 1-aminocyclopropane-1-carboxylate synthase 7	AS14 2774	WB
ACC synthase 8 1-aminocyclopropane-1-carboxylate synthase 8	AS19 4350	ELISA, WB
BIN2 Brassinosteroid insensitive 2	AS16 3203	WB
CHS Chalcone synthase	AS12 2615	WB
COI1 Coronate insensitive 1	AS12 2637	WB
EIN2 Ethylene insensitive 2	AS12 1865	WB
GAI DELLA protein GAI	AS11 1631	WB
NPR1 Nonexpresser of PR genes 1	AS12 1854	WB
RGA DELLA protein RGA	AS11 1630	WB
RGL2 RGA-like protein 2 (DELLA protein)	AS11 1803	WB
SAM1-4 S-adenosylmethionine synthase	AS16 3148	WB
SAM1-4 S-adenosylmethionine synthase (affinity purified)	AS16 3148A	WB
SNE18 Rossmann-fold NAD(P)-binding domain-containing protein	AS12 2118	WB

Hormones – Brassinosteroids

Product name	Product number	Applications
BAK1 Brassinosteroid insensitive 1-associated receptor kinase 1	AS12 1858	IP, WB
BIN2 Brassinosteroid insensitive 2	AS16 3203	WB
BRI1 Brassinosteroid insensitive 1	AS12 1859	IP, WB
TGG1 Myrosinase 1 (BGL38)	AS20 4416	ELISA, IG, IHC, WB
TGG2 Myrosinase 2 (BGL37)	AS20 4415	ELISA, IL, WB

Hormones – Cytokinins

Product name	Product number	Applications
Cytokinin Cis-zeatin riboside (1mg)	AS09 419	ELISA, RIA
Cytokinin Cis-zeatin riboside (for IL)	AS09 431	ICC
Cytokinin Dihydrozeatin riboside (1mg)	AS09 416	ELISA, RIA
Cytokinin Dihydrozeatin riboside (for IL)	AS09 437	IL
Cytokinin Kinetin riboside (1 mg)	AS09 443	ELISA, RIA
Cytokinin Meta-topolin riboside (1 mg)	AS09 417	ELISA, RIA
Cytokinin Meta-topolin riboside (for IL)	AS09 440	IL
Cytokinin N6-benzyladenosine (1 mg)	AS09 425	ELISA, RIA
Cytokinin N6-benzyladenosine (for IL)	AS09 438	IL
Cytokinin N6-isopentenyladenosine (1 mg)	AS09 415	ELISA, RIA
Cytokinin N6-isopentenyladenosine (for IL)	AS09 435	IL
Cytokinin Ortho-topolin riboside (1 mg)	AS09 418	ELISA, RIA
Cytokinin Ortho-topolin riboside (for IL)	AS09 442	IL
Cytokinin Trans-zeatin riboside (1mg)	AS09 414	ELISA, RIA

Hormones – ELISA kits

For ELISA kits to various plant hormones, please visit: www.agrisera.com/ELISA-kits.



Hormones – Ethylene

Product name	Product number	Applications
ACC synthase 7 1-aminocyclopropane-1-carboxylate synthase 7	AS14 2774	WB
EIN2 Ethylene insensitive 2	AS12 1865	WB
EIN3 Ethylene insensitive 3	AS23 4896	WB
SAM1-4 S-adenosylmethionine synthase	AS16 3148	WB

The Global Plant Event Calendar

In February of 2019, Plantae and Agrisera launched **The Global Plant Events Calendar**, which lists hundreds of worldwide meetings, congresses, seminars and workshops each year. This platform celebrates its 5th anniversary in 2024, and will continue to collect and present events over the years to come. This resource serves as a useful tool for plant scientists in their planning of conference attendance and event organization, as well as for discovering of new, exciting meetings!



plantae.org/events-calendar/

Free antibodies for testing

Receive 50 µg of antigen-affinity-purified antibodies for Western blot, ChIP and immunolocalization, **free of charge**, in return for experimental results. For Western blot testing, we also include a high-titer matching secondary antibody and outstanding chemiluminescence detection reagents for free.

All Agrisera antibodies are validated in at least two independent laboratories before becoming available for purchase, and we are always interested in finding test labs. Apply to become a test lab by sending an email to support@agrisera.com.

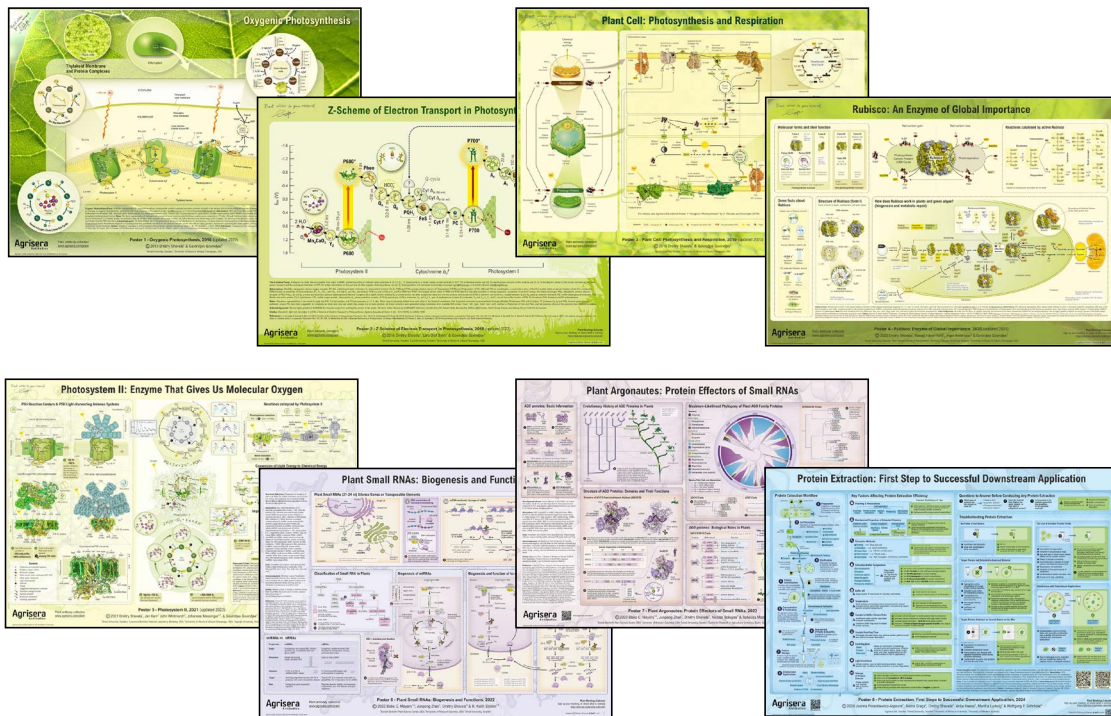
The list of antibodies available for testing contains **over 100 products**, and is regularly updated. Check out the full list at:



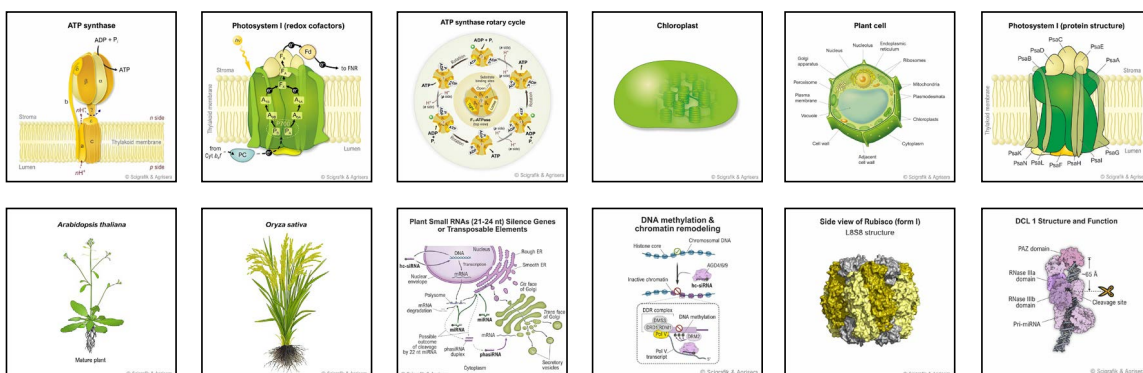
www.agrisera.com/en/antibodies-for-testing

Free educational posters and schemes

Agrisera's free-of-charge educational posters were developed together with leading scientists in the covered fields. The posters can be ordered as hard copies for free, or downloaded as pdf files on our website. The posters cover the topics Oxygenic Photosynthesis, Z-Scheme, Photosynthesis and Respiration, Rubisco, Photosystem II, Plant small RNAs, Plant Argonautes and Protein Extraction. Stay tuned for more posters to come!



As another gift to the plant community, Agrisera offers free-of-charge images of graphics and schemes extracted from the posters. All images can be downloaded on our website, to be used on your website or in your publications.



... and many more!

Request your hard poster copies for free, and access poster graphics for download at:

www.agrisera.com/en/educational-posters
www.agrisera.com/en/images-for-download



Hormones – Gibberellins

Product name	Product number	Applications
14-3-3 GRF General regulatory element	AS12 2119	WB
GAI DELLA protein GAI	AS11 1631	WB
GID1c Gibberellin receptor GID1C	AS14 2800	WB
GID2 F-BOX protein GID2 (SLEEPY 1)	AS13 2638	WB
PIF3 Phytochrome interacting factor 3 (goat antibody)	AS16 3954	WB
RGA DELLA protein RGA	AS11 1630	WB
RGL2 RGA-like protein 2 (DELLA protein)	AS11 1803	IL, WB

Hormones – Jasmonates

Product name	Product number	Applications
COI1 Coronate insensitive 1 (rabbit antibody)	AS12 2637	WB
JA Jasmonic acid	AS11 1799	IL
JAR1 Jasmonic acid-amido synthetase JAR1	AS16 3688	WB
JAZ1 Jasmonate ZIM-domain protein 1	AS13 2648	WB
NPR1 Nonexpresser of PR genes 1	AS12 1854	WB

Hormones – Salicylic acid

Product name	Product number	Applications
CERK1 Chitin elicitor receptor kinase 1	AS16 4037	WB
EDS1 Enhanced disease susceptibility 1	AS13 2751	WB
NPR1 Nonexpresser of PR genes 1	AS12 1854	WB
ICS1 Isochorismate synthase 1, chloroplastic	AS16 4107	WB
RPS4 Disease resistance protein RPS4	AS16 3992	WB



Publication record: www.agrisera.com/publication-record

Mitochondria/Respiration

Product name	Product number	Applications
AC01 Aconitase	AS09 521	WB
AOX1 Alternative oxidase 1	AS06 152	WB
AOX1/2 Plant alternative oxidase 1 and 2	AS04 054	IL, WB
AtpB Beta subunit of ATP synthase, chloroplastic + mitoch (chicken antibody)	AS03 030	IL, WB
AtpB Beta subunit of ATP synthase, chloroplastic + mitoch (rabbit antibody)	AS05 085	BN-PAGE, IF, U-ExM, WB
AtpB Beta subunit of ATP synthase, mitochondrial	AS16 3976	BN-PAGE, IF, WB
Beta-CA1, beta-CA2 Carbonic anhydrase mitochondrial <i>Chlamydomonas</i>	AS11 1737	IF, WB
COX11 Cytochrome c oxidase assembly protein	AS10 938	WB
COXII Cytochrome oxidase subunit II	AS04 053A	BN-PAGE, WB
COXII Cytochrome oxidase subunit II	AS04 052	WB
COXIIb Cytochrome oxidase subunit II b	AS06 151	WB
Cyt c Cytochrome c	AS08 343A	WB
DEGP12 Putative protease Do-like 12 (mitochondrial)	AS19 4345	ELISA, WB
DHAR1 Dehydroascorbate Reductase 1	AS11 1746	WB
FtsH10 ATP-dependent zinc metalloprotease FtsH10 (mitochondrial)	AS07 251	BN-PAGE, IP, WB
FtsH1-11 ATP-dependent zinc metalloprotease FtsH1-11	AS11 1789	BN-PAGE, WB
FtsH3 + FtsH10 ATP-dep. zinc metalloprotease FtsH3 + FtsH10 (mitochondrial)	AS07 204	BN-PAGE, WB
FtsH4 ATP-dependent zinc metalloprotease FtsH4 (mitochondrial)	AS07 205	WB
Gamma CA Gamma Carbonic anhydrases	AS17 4114	WB
GDC-H H protein of glycine decarboxylase complex (GDC)	AS05 074	WB
GDH2 Glutamate dehydrogenase 2	AS16 4034	WB
GLDH Galactono-1,4 lactone dehydrogenase	AS06 182	WB
HSP23.5 Heat shock protein 23.5 (mitochondrial)	AS21 4524	WB
AC01 Aconitase	AS09 521	WB
HSP23.6 Heat shock protein 23.6 (mitochondrial)	AS15 2980	WB
HSP26.5 Heat shock protein 26.5 (mitochondrial)	AS15 2981	WB
HSP70 Heat shock protein 70, mitochondrial	AS08 347	WB
IDH Isocitrate dehydrogenase	AS06 203A	WB
L16 Mitochondrial ribosomal large subunit protein L16	AS15 3069	WB
NAD6 NADH-ubiquinone oxidoreductase chain 6	AS15 2926	WB
NAD-ME Mitochondrial NAD-dependent malic enzyme	AS16 3932	IL, IP, WB
NDPK Nucleoside diphosphate kinase	AS08 302	WB
PDHE1-A Pyruvate dehydrogenase E1 component subunit alpha-1, mitochondrial	AS23 4974	WB
PDHE1-B Pyruvate dehydrogenase E1 component subunit beta-1, mitochondrial	AS23 4975	WB
S10 Mitochondrial ribosomal small subunit protein S10	AS15 3067	WB
S4 Mitochondrial ribosomal small subunit protein S4	AS15 3068	WB
SHMT Serine hydroxymethyltransferase	AS05 075	WB
SHMT1 Serine hydroxymethyltransferase 1, mitochondrial	AS23 4913	WB
STO1 Stomatin-like protein 1	AS17 4148	WB
TIM8 Mitochondrial import inner membrane translocase subunit TIM8	AS18 4236	WB
TIM9 Mitochondrial import inner membrane translocase subunit TIM9	AS18 4237	WB
TIM10 Mitochondrial import inner membrane translocase subunit TIM10	AS23 4950	WB
Tom 9 Mitochondrial import receptor subunit TOM9	AS15 2902	WB
TOM40-1/2 Mitochondrial import receptor subunit TOM40-1/2	AS22 4845	WB
UCP Uncoupling protein	AS12 1850	WB
VDAC1-5 Voltage-dependent anion-selective channel protein 1-5	AS07 212	BN-PAGE, IL, WB
...ALP-conjugated (AS07 212-ALP), Biotin-conjugated (AS07 212B), HRP-conjugated (AS07 212-HRP)		
DyLight®488-conj. (AS07 212-DL488), DyLight®594-conj. (AS07 212-DL594), DyLight®650-conj. (AS07 212-DL650)		



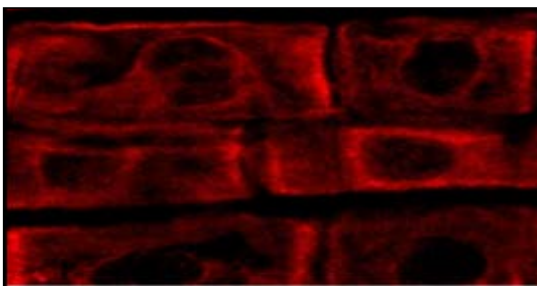
Search antibody by species: www.agrisera.com/search-by-species

Membrane transport – Endomembrane

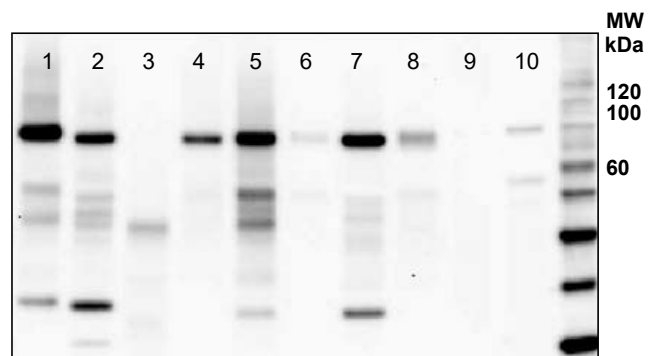
Product name	Product number	Applications
2S3M 2S seed storage protein 3 (2S3 Albumin)	AS20 4404	ELISA, IL, WB
2S3P 2S seed storage protein 3	AS20 4405	ELISA, IL, WB
ACA2 Calcium-transporting ATPase 2	AS17 4155	WB
ARF1 ADP-ribosylation factor 1	AS08 325	IF, IG, WB
BG1 Beta-glucosidase 1	AS20 4419	IL, WB
BiP Lumenal-binding protein	AS09 481	ELISA, IF, IG, WB
...ALP-conjugated (AS09 481-ALP), Biotin-conjugated (AS09 481B), HRP-conjugated (AS09 481-HRP)		
DyLight® 488-conj. (AS09 481-DL488), DyLight® 594-conj. (AS09 481-DL594), DyLight® 650-conj. (AS09 481-DL650)		
ECA1 Calcium-transporting ATPase 1, endoplasmic reticulum-type	AS17 4156	WB
FREE1 Protein FREE1	AS22 4702	WB
HDEL Endoplasmic reticulum retention signal (monoclonal)	AS10 683	IF, IG, WB
KDEL Endoplasmic reticulum retention signal (polyclonal)	AS13 2665	IHC, WB
PIP (PIP1;1, PIP1;2, PIP1;3, PIP1;4, PIP1;5) Aquaporins	AS09 487	WB
...ALP-conjugated (AS09 487-ALP), Biotin-conjugated (AS09 487B), HRP-conjugated (AS09 487-HRP)		
DyLight® 488-conj. (AS09 487-DL488), DyLight® 594-conj. (AS09 487-DL594), DyLight® 650-conj. (AS09 487-DL650)		
RPS12 Ribosomal protein S12 (chloroplasmic)	AS12 2114	WB
RPS14 40S ribosomal protein S14-1	AS12 2111	WB
Sec21p Gamma subunit, COP vesicles	AS08 327	IF, WB
SMT1 Sterol methyltransferase 1	AS07 266	IL, WB
BiP Lumenal-binding protein (chicken antibody)	AS09 614	IF, WB
BiP Lumenal-binding protein (goat antibody)	AS09 615	IF, WB
Clathrin heavy-chain 1,2	AS10 690	IF, IL, WB
...ALP-conjugated (AS10 690-ALP), Biotin-conjugated (AS10 690B), HRP-conjugated (AS10 690-HRP)		
DyLight® 488-conj. (AS10 690-DL488), DyLight® 594-conj. (AS10 690-DL594), DyLight® 650-conj. (AS10 690-DL650)		
CNX1/2 CALNEXIN HOMOLOG 1/2	AS12 2365	WB
GPXh Glutathione peroxidase	AS15 2882	WB
GST1 Glutathione-S-transferase	AS15 2883	WB
HDEL Endoplasmic reticulum retention signal (25 µg)	AS10 683-25	IF, IG, WB
L13-1 60S ribosomal protein L13-1	AS13 2650	WB
MEB1 Membrane protein of ER body 1	AS20 4423	ELISA, IP, WB
MEB2 Membrane protein of ER body 2	AS20 4422	IHC, WB
NAI2 TSA1-like protein, C-terminal	AS20 4420	WB
Phy Phytochrome (clone Oat-23)	AS20 4505-1ml	ELISA, IF, IP, WB
PYK10 Beta-Galactosidase (C-terminal)	AS20 4410	IHC, WB
PYK10 Beta-Galactosidase (internal) (ER marker, immunolocalisation)	AS20 4409	IF, IHC, IP, WB
RPL37 Ribosomal protein L37, cytoplasmic	AS12 2115	WB
Sar1 Secretion-associated and Ras-related protein 1	AS08 326	IG, WB
VPS26A Vacuolar protein sorting 26A	AS13 2632	WB
VPS29 Vacuolar protein sorting 29	AS13 2633	WB
VSR1 Vacuolar-sorting receptor 1	AS20 4407	IF, WB
VPS29 Vacuolar protein sorting-associated protein 29	AS20 4401	IP, WB

Application examples

Anti-BiP Product #: AS09 481



BiP immunolocalization in 3-day-old *T. aestivum* roots. Courtesy of Dr. Taras Pasternak, Freiburg University.



WB using Agrisera BiP antibody on 5 µg of total protein from (1) *A. thaliana*, (2) *H. vulgare*, (3) *P. sativum*, (4) *Z. mays*, (5) *C. sativus*, (6) *S. tuberosum*, (7) *S. oleracea*, (8) *S. lycopersicum*, (9) *P. patens* and (10) *C. reinhardtii*. BiP is detected at 80 kDa.

Membrane transport – Plasma membrane

Product name	Product number	Applications
AHA2 p ATPase 2 phosphorylated, plasma membrane-type	AS22 4789	WB
AKT1 Potassium channel AKT1	AS09 516	WB
GORK Potassium channel GORK	AS14 2795	WB
H+ATPase Plasma membrane H+ATPase (chicken antibody)	AS13 2671	WB
H+ATPase Plasma membrane H+ATPase	AS07 260	IF, IL, WB
...ALP-conjugated (AS07 260-ALP), Biotin-conjugated (AS07 260B), HRP-conjugated (AS07 260-HRP)		
DyLight®488-conj. (AS07 260-DL488), DyLight®594-conj. (AS07 260-DL594), DyLight®650-conj. (AS07 260-DL650)		
KAT1 Potassium channel protein	AS17 4150	WB
KC1 potassium channel KAT3	AS09 515	WB
MIP1 Aquaporin, glycerol transport activity	AS15 2826	IG, WB
PDR8 ABC transporter G family member 36	AS22 4846	WB
PIP (PIP1;1, PIP1;2, PIP1;3, PIP1;4, PIP1;5) Aquaporins	AS09 487	WB
...ALP-conjugated (AS09 487-ALP), Biotin-conjugated (AS09 487B), HRP-conjugated (AS09 487-HRP)		
DyLight® 488-conj. (AS09 487-DL488), DyLight® 594-conj. (AS09 487-DL594), DyLight® 650-conj. (AS09 487-DL650)		
PIP1;1, PIP1;2, PIP1;3, PIP1;4, PIP1;5 Aquaporins	AS22 4816	WB
PIP2-1-7 Plasma membrane aquaporin isoforms 1-7 (C-terminal)	AS12 2110	WB
PIP2;1, PIP2;2, PIP2;3 Plasma membrane intrinsic protein 2-1, 2-2, 2-3	AS22 4810	WB
Sec6 Exocyst complex subunit	AS13 2686	WB
Sec8 Exocyst complex component SEC8	AS13 2708	WB

Membrane transport – Vacuolar membrane

Product name	Product number	Applications
AtCCaP1 vacuolar calcium-binding protein-related	AS09 483	ELISA, WB
CNX Calnexin (monoclonal, clone 11A1)	AS17 4164	IL, IP, WB
Delta-VPE Vacuolar-processing enzyme delta-isozyme	AS20 4408	IF, IL, WB
Ligand-gated ion channel 1,3	AS09 475	ELISA, WB
Na+/H+ antiporter, sodium/hydrogen exchanger	AS09 484	ELISA, WB
TIP1;1, TIP1;2 tonoplast intrinsic protein 1-1, 1-2 (gamma)	AS22 4844	WB
TIP2 Tonoplast intrinsic protein 2;1, 2;2, 2;3	AS12 2619	WB
V-ATPase Epsilon subunit of tonoplast H+ATPase	AS07 213	IF, IHC, WB
V-ATPase Epsilon subunit of tonoplast H+ATPase (goat antibody)	AS09 577	WB
V-ATPase Epsilon subunit of tonoplast H+ATPase (affinity purified)	AS09 577A	IF, WB
V-ATPase, B Vacuolar H+ATPase subunit B	AS14 2775	WB
V-ATPase, C Vacuolar H+ATPase, subunit C (16 kDa)	AS09 468	WB
V-PPase Vacuolar H+-pyrophosphatase	AS12 1849	WB
V-ATPase, a1 Vacuolar H+ATPase subunit a isoform 1	AS14 2822	ELISA, WB
V-ATPase, a3 vacuolar H+ATPase subunit a isoform 3	AS20 4369	WB
V-ATPase holoenzyme	AS17 4158	WB
V-ATPase, subunit 36 kDa (Avena sativa) (clone 7A3)	AS17 4163	IP, WB
VPS35 Vacuolar protein sorting-associated protein 35B (marker of PVC)	AS20 4402	ELISA, IF, IP, WB



Publication record: www.agrisera.com/publication-record

Nitrogen metabolism

Product name	Product number	Applications
ALEU Thiol protease aleurain	AS20 4406	WB
ASN Glutamine-dependent asparagine synthetase	AS20 4425	ELISA, IHC, WB
GDH1 Glutamate dehydrogenase 1	AS05 068	IL, WB
GLN1 GLN2 GS1 GS2 glutamine synthetase global antibody	AS08 295	WB
GLN2 GS2, chloroplastic form of glutamine synthetase	AS08 296	WB
GlnA Glutamine synthetase	AS01 018	WB
GltBD NADPH-dependent glutamate synthase	AS20 4427	ELISA, WB
Glutamine synthetase (leaf,root)	AS20 4426	ELISA, WB
GOGAT Glutamine oxoglutarate aminotransferase	AS07 242	WB
NifH Nitrogenase iron protein	AS01 021A	IF, IHC, WB
NodGS Nodulin / glutamate-ammonia ligase-like protein	AS15 3030	IF, IP, WB
NodGS Nodulin / glutamate-ammonia ligase-like protein	AS15 3030A	IF, IP, WB
NR Nitrate reductase, assimilatory	AS08 310	WB
NRT1.1 Nitrate transporter 1.1	AS12 2611	IL, WB
NRT2.1 Nitrate transporter 2.1	AS12 2612	WB
NtcA Global nitrogen regulator	AS12 1873	WB
Urease	AS09 559	ELISA, IF, IHC, WB

Photosynthesis – ATP synthase

Product name	Product number	Applications
AtpA Alpha subunit of ATP synthase, chloroplastic	AS08 304	IP, WB
AtpB Beta subunit of ATP synthase, chloroplastic + mitoch (chicken antibody)	AS03 030	IL, WB
AtpB Beta subunit of ATP synthase, chloroplastic + mitoch (rabbit antibody)	AS05 085	BN-PAGE, IF, U-ExM, WB
AtpC Gamma subunit of ATP synthase, chloroplastic	AS08 312	WB
AtpD CF1 delta subunit of ATP synthase, affinity purified	AS10 1590	WB
AtpD CF1 delta subunit of ATP synthase	AS10 1591	WB
AtpE Epsilon subunit of ATP synthase	AS10 1586	WB
AtpF CF0I subunit of ATP synthase	AS10 1604	WB
AtpG ATPsynthase subunit II b', chloroplastic	AS09 457	WB
AtpH ATP synthase subunit c, chloroplastic	AS05 071	WB
AtpH ATP synthase subunit c, chloroplastic	AS09 591	WB
AtpI CFoIV subunit of ATP synthase	AS10 1583	WB
CGL160 Conserved in green lineage 160	AS12 1853	WB
CGL40	AS13 2641	WB
PSA2 Photosystem I assembly factor 2	AS13 2654	IP, WB

Photosynthesis – Biogenesis/architecture

Product name	Product number	Applications
ARC5 Dynamin-like protein ARC5	AS13 2676	WB
ARSA Targeting of tail-anchored proteins	AS15 3083	WB
ClpR4 ATP-dep. Clp protease proteolytic subunit-rel. prot. 4, chloroplastic	AS16 4057	WB
ClpT1 ATP-dependent Clp protease ATP-binding subunit CLPT1, chloroplastic	AS16 4058	WB
CURT1A Curvature thylakoid 1A	AS08 316	2D BN/SDS-PAGE, WB
CURT1C Curvature thylakoid 1C	AS19 4287	2D BN-PAGE, WB
CURT1D Curvature thylakoid 1D	AS19 4288	2D BN-PAGE, WB
DRP5B Dynamin related protein 5B	AS12 2634	WB
GUN4 Regulatory subunit of Mg-chelatase	AS15 3090	WB
Nucleomorph HLIP Nucleomorph high-light induced protein	AS17 4117	WB
PAB Protein in chloroplast atpase biogenesis	AS15 2833	WB
PLAP6 PAP fibrillin domain-containing protein	AS22 4784	IF
RBP40 38 kDa RNA-binding protein	AS14 2820	IP, WB
RPL33 50S ribosomal protein L33 (chloroplastic)	AS16 4082	WB
SRP43 Signal recognition peptide 43	AS12 2105	WB
SVR4 Suppressor of variegation 4	AS13 2725	WB
SVR4-like Suppressor of variegation 4 - like	AS13 2726	WB
TAB3 Nucleus-encoded factor involved in PsaB translation	AS15 3089	WB

Photosynthesis – Carotenoid metabolism

Product name	Product number	Applications
IPP isomerase Isopentyl pyrophosphate isomerase	AS13 2710	WB
LCY Lycopene beta-cyclase, chloroplastic	AS15 3079	WB
LUT1 Beta-carotene hydroxylase	AS15 3084	WB
LUT5 Beta-carotene hydroxylase	AS15 3085	WB
LYC Lycopene beta cyclase, chloroplastic	AS13 2709	WB
NtrC Thioredoxin reductase (TR/TRxR) (algal)	AS06 159	WB
NtrC Thioredoxin reductase (TR/TRxR) (higher plants)	AS07 243	WB
PSY Phytoene synthase	AS16 3991	WB
ZEP Zeaxanthin Epoxidase (anti-protein)	AS15 3092	WB

Photosynthesis – Chaperones/Transport

Product name	Product number	Applications
CGE1 Alfa-CGE1, chloroplastic GrpE homolog	AS06 176	IP, WB
ClpB1 Chaperone protein ClpB1 (cyanobacterial)	AS16 4039	WB
ClpB2 Chaperone protein ClpB2 (cyanobacterial)	AS16 4040	WB
ClpB-P ClpB3	AS09 459	WB
ClpD Chaperone protein ClpD, chloroplastic	AS16 4048	WB
ClpP1 ATP-dependent Clp protease proteolytic subunit 1 (cyanobacterial)	AS16 4041	WB
ClpP2 ATP-dependent Clp protease proteolytic subunit 2 (cyanobacterial)	AS16 4042	WB
ClpP3 ATP-dependent Clp protease proteolytic subunit 3 (cyanobacterial)	AS16 4043	WB
DnaK Chloroplast stromal chaperone	AS07 270	WB
LTP Vesicle-inducing protein in plastids (VIPP1)	AS06 145	WB
PAB Protein in chloroplast atpase biogenesis	AS15 2833	WB
Tic40 Inner envelope membrane translocon complex protein (chloroplast)	AS10 709	IF, WB
Toc75 Protein TOC75-3, chloroplastic, POTRA domain 1	AS08 345	FACS, IL, WB
Toc75 Protein TOC75-3, chloroplastic, POTRA domain 3	AS08 351	FACS, IL, WB

Photosynthesis – Chlorophyll

Product name	Product number	Applications
ACD1 Accelerated cell death 1	AS11 1783	WB
CHLH (GUN5) Magnesium-chelatase subunit ChlH, chloroplastic	AS22 4712	WB
CPX1 Coproporphyrinogen-III oxidase 1	AS13 2753	WB
CPX1 Coproporphyrinogen III oxidase, isoform 1	AS06 123	WB
CRD1 Cyanobacterial homolog of plant CHL27 cyclase	AS06 122	WB
G4 Chlorophyll synthase (chloroplastic)	AS14 2793	WB, CN-PAGE
GluTR Glutamyl -tRNA reductase	AS10 689	WB
GUN4 Regulatory subunit of Mg-chelatase	AS15 3090	WB
HemC Porphobilinogen-Deaminase (PBG)	AS08 375	WB
HemH Protoporphyrin ferrochelatase	AS07 228	WB
NtrC Thioredoxin reductase (TR/TRxR) (algal)	AS06 159	WB
NtrC Thioredoxin reductase (TR/TRxR) (higher plants)	AS07 243	WB
POR Protochlorophyllide oxidoreductase	AS05 067	WB

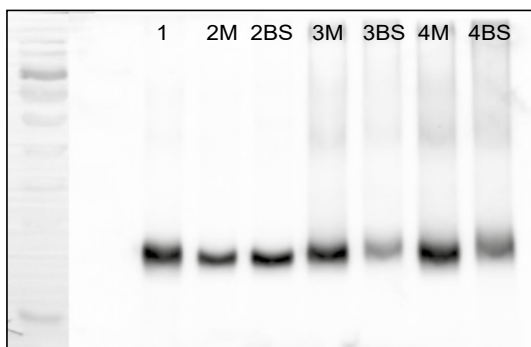
Photosynthesis – Electron transfer

Product name	Product number	Applications
Cyt b6/PetB Thylakoid membrane cytochrome b6 protein, N terminal	AS18 4169	WB
Cyt c6 Thylakoid lumen cytochrome c6 protein	AS06 202	WB
Cyt f Cytochrome f protein (PetA) of thylakoid Cyt b6/f-complex	AS06 119	WB
Cyt f Cytochrome f protein (PetA) of thylakoid Cyt b6/f-comp.(higher plants)	AS20 4377	WB
Fd Ferredoxin 1 (chloroplastic)	AS11 1757	WB
Fd-GOGAT Ferredoxin-dependent Glutamate synthase	AS20 4428	ELISA, WB
Fd1, Fd2, Fd3, Fd4 Ferredoxin 1,2,3,4	AS20 4431	ELISA, WB
Fd1 Ferredoxin 1 (chloroplastic)	AS20 4434	ELISA, WB
Fd2 Ferredoxin 2 (chloroplastic)	AS20 4433	ELISA, WB
Fd3 Ferredoxin 3	AS20 4432	ELISA, WB
FdC1 Ferredoxin-C1	AS20 4430	ELISA, WB
FDX1 Ferredoxin	AS06 121	WB
Fdx2 Ferredoxin 2	AS16 3114	WB
Fdx3 Ferredoxin 3	AS07 224	WB
Fdx6 Ferredoxin 6	AS07 223	WB
FNR Ferredoxin-NADP+-oxidoreductase	AS15 2909	WB
FNR Ferredoxin NADP Reductase (root)	AS20 4436	ELISA, WB
FNR1 Ferredoxin NADP Reductase, isoprotein 1 (leaf)	AS20 4439	ELISA, WB
FNR2 Ferredoxin NADP Reductase, isoprotein 2 (leaf)	AS20 4438	ELISA, WB
FNR3 Ferredoxin NADP Reductase, isoprotein 3 (leaf)	AS20 4437	ELISA, WB
NdbA Thylakoid Localized Type 2 NAD(P)H Dehydrogenase	AS19 4297	WB
NdhB NAD(P)H-quinone oxidoreductase subunit B (chloroplastic)	AS16 4064	WB
NdhH NAD(P)H-quinone oxidoreductase subunit H (chloroplastic, <i>Z. mays</i>)	AS16 4065	WB
NdhS NAD(P)H-quinone oxidoreductase subunit S (chloroplastic)	AS16 4066	WB
PC Plastocyanin	AS06 141	IG, WB
PetC Rieske iron-sulfur protein of Cyt b6/f complex	AS08 330	WB
PetC Rieske iron-sulfur protein of Cyt b6/f complex, protein standard	AS08 330S	WB
PetD Cytochrome b6-f complex subunit 4	AS22 4711	WB
PetL Cytochrome b6-f complex subunit 6	AS22 4883	WB
PGR5 Protn gradient regulation 5	AS16 3985	IP, WB
PGRL1 PGR5-like protein 1A (chloroplastic)	AS19 4311	WB
Pre-apoplastocyanin	AS06 118	WB
PrxQ Peroxiredoxin, thioredoxin reductase	AS05 093	WB
PsbE Alfa subunit of Cytochrome b559 of PSII	AS06 112	WB
PTOX Plastid terminal oxidase	AS23 4895	WB
TROL Thylakoid rhodanese-like protein	AS19 4257	WB

Application example

Anti-Cytb6

Product #: AS18 4169



MW
kDa

180
130
95
72
55
43
34
26
17

-- Cyt b6 / PetB

WB using Agrisera Cyt b6 / PetB antibody.
Samples: chlorophyll from *Pisum sativum* thylakoids (1), and from mesophyll (M) and bundle sheath (BS) thylakoids of *Zea mays* (2), *Panicum miliaceum* (3) and *Echinochloa crus-galli* (4).

Photosynthesis – GreenCut

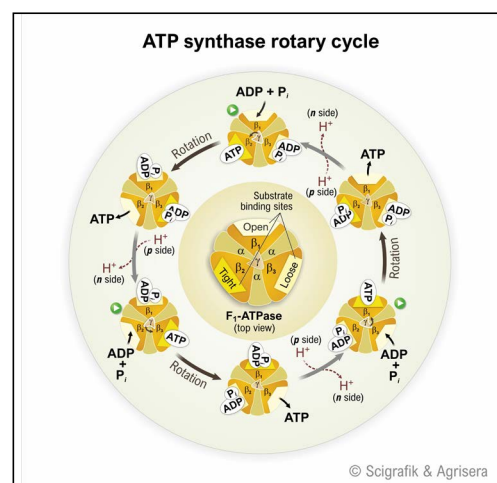
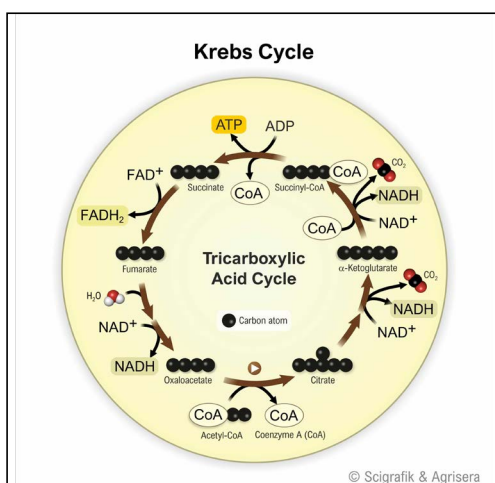
Product name.....	Product number	Applications
At2g21960.....	AS15 2834	WB
CGL160 Conserved in green lineage 160.....	AS12 1853	WB
CGLD27 Conserved in the Green Lineage and Diatoms 27.....	AS13 2683	WB
CGL40.....	AS13 2641	WB
CGL78 YCF54.....	AS10 936	WB
CGLD27.....	AS13 2683	WB
CGLD27B (At5g11840).....	AS14 2762	WB
CNfU1 NifU-like protein 1 (chloroplastic).....	AS13 2642	WB
PSA2 Photosystem I assembly factor 2.....	AS13 2654	IP, WB
PSB33 Rieske (2Fe-2S) domain-containing protein.....	AS12 1852	WB
RIQ1 Reduced induction of non-photochemical quenching 1.....	AS15 2835	WB
SNE18 Rossmann-fold NAD(P)-binding domain-containing protein.....	AS12 2118	WB
VDR1 Violaxanthin de-epoxidase-related protein.....	AS12 2117	WB

Photosynthesis – Kinases

Product name.....	Product number	Applications
cpCK2 Casein kinase II subunit alpha (chloroplastic).....	AS16 3211	WB
STN8 Serine/threonine-protein kinase STN8 (chloroplastic).....	AS10 1601	WB
STT7 Serine/threonine-protein kinase STT7 (chloroplastic).....	AS15 3080	WB

Free images for download

As gift to the plant community, Agrisera offers free-of-charge images of graphics and schemes extracted from our educational posters. All images can be downloaded on our website, to be used on your website or in your publications.



www.agrisera.com/en/images-for-download

Photosynthesis – LHC

Product name	Product number	Applications
95 kDa Lcm (phycobilisome - to- thylakoid core linker with phycocyanobilin)	AS08 281	WB
Alb3.2 Inner membrane ALBINO3-like protein 2, chloroplastic	AS22 4733	WB
APC Allophycocyanin alpha and beta	AS08 277	IL, WB
b-PE Phycoerythrobilin	AS08 279	WB
B-PE Phycoerythrobilin and phycourobilin	AS08 280	WB
FCP Fucoxanthin Chla/c protein	AS17 4116	WB
Lhc1 PS 1 light harvesting holo-complex	AS08 282	WB
Lhca1 PSI type I chlorophyll a/b-binding protein	AS01 005	WB
Lhca2 PSI type II chlorophyll a/b-binding protein	AS01 006	WB
Lhca3 PSI type III chlorophyll a/b-binding protein	AS01 007	WB
Lhca4 PSI type IV chlorophyll a/b-binding protein	AS01 008	WB
Lhca5 PSI type V chlorophyll a/b-binding protein	AS05 082	WB
Lhcb1 LHCII type I chlorophyll a/b-binding protein	AS09 522	WB
Lhcb1 LHCII type I chlorophyll a/b-binding protein (<i>Arabidopsis</i> specific)	AS09 522	WB
Lhcb1-P LHCII type I chlorophyll a/b-binding protein, phosphorylated	AS13 2704	WB
Lhcb2 LHCII type II chlorophyll a/b-binding protein	AS01 003	IP, WB
Lhcb2-P LHCII type II chlorophyll a/b-binding protein, phosphorylated	AS13 2705	WB
Lhcb3 LHCII type III chlorophyll a/b-binding protein	AS01 002	WB
Lhcb4 CP29 (Lhcb4) homolog, <i>Chlamydomonas</i>	AS06 117	WB
Lhcb4 CP29 (Lhcb4) homolog, <i>Ostreococcus tauri</i>	AS09 512	WB
Lhcb4 CP29 chlorophyll a/b binding protein of plant PSII	AS04 045	WB
Lhcb5 CP26 (Lhcb5) homolog, <i>Chlamydomonas</i>	AS09 407	WB
Lhcb5 CP26 (Lhcb5) homolog, <i>Ostreococcus tauri</i>	AS09 513	WB
Lhcb5 CP26 chlorophyll a/b-binding protein of plant PSII	AS01 009	IHC, WB
Lhcb6 CP24 chlorophyll a/b-binding protein of plant PSII	AS01 010	WB
LHCB9 Light-harvesting complex	AS15 3088	WB
Lhcbm5 Chlorophyll a-b binding protein of LHCII	AS09 408	WB
LHCR4 Protein fucoxanthin chlorophyll a/c protein	AS19 4303	WB
LHCSR1	AS14 2819	WB
LHCSR1 (<i>Physcomitrella patens</i>)	AS15 3081	WB
LHCSR3	AS14 2766	ELISA, WB
Lhcx6 Lhc subclade of fucoxanthin Chl a/c proteins	AS17 4115	WB
LHL4 LHC-like protein 4	AS07 250	WB
R-PC R-phycocyanin	AS08 278	WB

Photosynthesis – Light acclimation

Product name	Product number	Applications
CURT1A Curvature thylakoid 1A	AS08 316	WB, 2D BN/SDS-PAGE
CURT1B Curvature thylakoid 1B	AS19 4289	WB
CURT1C Curvature thylakoid 1C	AS19 4287	2D BN-PAGE, WB
CURT1D Curvature thylakoid 1D	AS19 4288	2D BN-PAGE, WB
Elip2 Early light inducible protein 2	AS03 036	WB
Lhcb1 LHCII type I chlorophyll a/b-binding protein	AS09 522	WB
Lhcb2 LHCII type II chlorophyll a/b-binding protein	AS01 003	IP, WB
PPH1/TAP38 Protein phosphatase 1	AS16 4084	WB
PGR5 Proton gradient regulation 5	AS16 3985	IP, WB
PGRL1 PGR5-like protein 1A, chloroplastic	AS19 4311	WB
RIQ1 Reduced induction of non-photochemical quenching 1	AS15 2835	WB
STN7 Serine/threonine-protein kinase STN7, chloroplastic	AS16 4098	WB
STN8 Serine/threonine-protein kinase STN8, chloroplastic	AS10 1601	WB
STT7 Serine/threonine-protein kinase STT7, chloroplastic	AS15 3080	WB
VDE Violaxanthin de-epoxidase	AS15 3091	WB
VDR1 Violaxanthin de-epoxidase-related protein	AS12 2117	WB
ZEP Zeaxanthin Epoxidase	AS23 4947	WB

Photosynthesis – Proteases

Product name	Product number	Applications
ClpC Chloroplastic form of HSP100	AS01 001	IHC, IP, WB
ClpP1 ATP-dependent Clp protease proteolytic subunit 1, chloroplastic	AS16 4049	WB
ClpP3 ATP-dependent Clp protease proteolytic subunit 3, chloroplastic	AS16 4050	WB
ClpP4 ATP-dependent Clp protease proteolytic subunit 4, chloroplastic	AS16 4051	WB
ClpP5 ATP-dependent Clp protease proteolytic subunit 5, chloroplastic	AS16 4052	WB
ClpP6 ATP-dependent Clp protease proteolytic subunit 6, chloroplastic	AS16 4053	WB
ClpP6 Chloroplast ClpP6 proteolytic subunit	AS13 2655	WB
ClpR1 ATP-dep. Clp protease proteolytic subunit-rel. prot. 1, chloroplastic	AS16 4054	WB
ClpR2 ATP-dep. Clp protease proteolytic subunit-rel. prot. 2, chloroplastic	AS16 4055	WB
ClpR3 ATP-dep. Clp protease proteolytic subunit-rel. prot. 3, chloroplastic	AS16 4056	WB
ClpR4 ATP-dep. Clp protease proteolytic subunit-rel. prot. 4, chloroplastic	AS16 4057	WB
ClpT1 ATP-dep. Clp protease ATP-binding subunit CLPT1, chloroplastic	AS16 4058	WB
Deg1 Chloroplastic DegP-type serine protease 1	AS07 246	WB
Deg2 Chloroplastic DegP-type serine protease 2	AS10 1581	WB
Deg5 Protease Do-like 5, chloroplastic	AS10 703	WB
Deg8 Protease Do-like 8, chloroplastic	AS14 2767	WB
DegP7 Protease Do-like 7	AS11 1756	WB
FtsH1 + FtsH5 ATP-dep. zinc metalloprotease FtsH1 + FtsH5, chloroplastic	AS16 3930	WB
FtsH2 + FtsH8 ATP-dep. zinc metalloprotease FtsH2 + FtsH8, chloroplastic	AS16 3929	WB
FtsH6 ATP-dependent zinc metalloprotease FtsH6, chloroplastic	AS05 094A	WB
FtsH9 ATP-dependent zinc metalloprotease FtsH9, chloroplastic	AS06 130	WB
HtrA Putative serine protease	AS10 1602	WB
slr1239 PntA	AS15 2910	WB

Photosynthesis – PSI (Photosystem I)

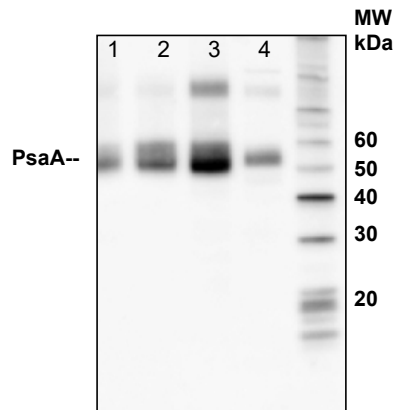
Product name	Product number	Applications
Hcf101 High chlorophyll fluorescence phenotype protein	AS06 163	IL, WB
PsaA PSI-A core protein of photosystem I	AS06 172	IG, WB
PsaB PSI-B core subunit of photosystem I	AS10 695	WB
PsaC PSI-C core subunit of photosystem I	AS10 939	WB
PsaD PSI-D subunit of photosystem I	AS09 461	IP, WB, CN-PAGE
PsaD PSI-D subunit of photosystem I (algal)	AS22 4730	WB
PsaE PSI-E subunit of photosystem I (affinity purified)	AS08 324A	WB
PsaE PSI-E subunit of photosystem I (algal)	AS22 4731	WB
PsaE PSI-E subunit of photosystem I (monocot)	AS04 047	WB
PsaF PSI-F subunit of photosystem I	AS06 104	WB
PsaF PSI-F subunit of photosystem I (algal)	AS22 4732	WB
PsaG PSI-G subunit of photosystem I	AS20 4368	WB
PsaG PSI-G subunit of photosystem I, <i>Chlamydomonas</i>	AS06 144	WB
PsaH PSI-H subunit of photosystem I	AS06 105	WB
PsaH PSI-H subunit of photosystem I, <i>Chlamydomonas</i>	AS06 143	WB
PsaK PSI-K subunit of photosystem I	AS23 4919	WB
PsaL PSI-L subunit of photosystem I	AS06 108	WB
PsaN PSI-N subunit of photosystem I	AS06 109	WB
PsaO PSI-O subunit of photosystem I	AS04 050	WB
PSA3 Photosystem I Assembly 3	AS15 2872	WB
TAB3 Nucleus-encoded factor involved in PsaB translation	AS15 3089	WB
Ycf3 Photosystem I assembly protein ycf3	AS07 273	WB
Ycf4 Photosystem I assembly protein ycf4	AS07 274	WB

Photosynthesis – PSII (Photosystem II)

Product name.....	Product number	Applications
CP43' IsiA homolog of plant CP43.....	AS06 111	WB
Psb27-H1 Photosystem II repair protein 27.....	AS22 4788	WB
Psb29 Thylakoid membrane formation 1, THF1.....	AS07 240	IP, WB
PsbA D1 protein of PSII, C-terminal.....	AS05 084	WB
PsbA D1 protein of PSII, C-terminal.....	AS01 016	WB
PsbA D1 protein of PSII, DE-loop.....	AS10 704	WB
PsbA D1 protein of PSII, N-terminal.....	AS11 1786	WB
PsbA D1 protein of PSII, phosphorylated.....	AS13 2669	WB
PsbB CP47 protein of PSII.....	AS04 038	WB
PsbC CP43 protein of PSII.....	AS11 1787	WB
PsbD D2 protein of PSII.....	AS06 146	WB, CN-PAGE
PsbE Alfa subunit of Cytochrome b559 of PSII.....	AS06 112	WB
PsbE Cytochrome b559 subunit alpha (Algal).....	AS19 4330	WB
PsbF Beta subunit of Cytochrome b559 of PSII.....	AS06 113	WB
PsbH Small subunit H of PSII.....	AS06 157	IP, WB
PsbI Small subunit I of PSII (cyanobacterial).....	AS10 692	WB
PsbI Small subunit I of PSII.....	AS06 158	WB
PsbN Photosystem II reaction center protein N.....	AS14 2786	WB
Psb0 33 kDa of the oxygen evolving complex (OEC) of PSII.....	AS05 092	IHC, IP, WB
Psb0 Photosystem II manganese-stabilizing polypeptide (algal).....	AS21 4689	WB
Psb01 33 kDa of the oxygen evolving complex (OEC) of PSII.....	AS14 2824	IP, WB
Psb02 33 kDa of the oxygen evolving complex (OEC) of PSII.....	AS14 2825	IP, WB
PsbP 23 kDa protein of the oxygen evolving complex (OEC) of PSII.....	AS06 142-23	WB
PsbP 23 kDa protein of the oxygen evolving complex (OEC) of PSII.....	AS08 305	WB
PsbP 23 kDa protein of the oxygen evolving complex (OEC) of PSII.....	AS06 167	WB
PsbP-like protein (sll1418) cyanobacterial.....	AS10 682	WB
PsbQ 16 kDa protein of the oxygen evolving complex (OEC) of PSII.....	AS06 142-16	WB
PsbR 10 kDa protein of PSII.....	AS05 059	WB
PsbS 22 kDa Lhc-like PSII protein (chicken antibody).....	AS03 032	WB
PsbS 22 kDa Lhc-like PSII protein (rabbit antibody).....	AS09 533	WB
PsbW Small subunit W of PSII.....	AS05 060	WB
PsbX Small subunit X of PSII.....	AS05 066	WB
PsbY Small subunit Y of PSII.....	AS06 114	WB
PsbTn Tn protein of PSII.....	AS06 171	WB
Tlp18.3 Thylakoid lumen 18.3 kDa protein.....	AS08 369	WB

Application example

Anti-PsaA
Product #:AS06 172



WB using Agrisera PsaA antibody on 2 µg of total protein from (1) *A. thaliana* leaf, (2) *H. vulgare* leaf, (3) *C. reinhardtii* total cell, (4) *Synechococcus* sp. 7942 total cell.

Photosynthesis – RUBISCO/Carbon metabolism

Product name	Product number	Applications
CAH3 Carbonic anhydrase	AS05 073	IF, IG, WB
CPN60A1 Chaperonin 60 subunit alpha 1, chloroplastic	AS12 2613	WB
CsoS1A/B/C Major carboxysome shell protein 1A, AB, 1C	AS14 2760	WB
EPSP synthase 3-phosphoshikimate 1-carboxyvinyltransferase (chloroplastic)	AS14 2782	WB
EPYC1 Essential Pyrenoid Component 1	AS19 4312	WB
Lci5 Low carbon dioxide induced protein number 5	AS05 090	IHC, WB
NADP-ME NADP-malic enzyme, chloroplastic (dicots/monocots)	AS21 4580	WB
PEPC Phosphoenolpyruvate carboxylase	AS09 458	IL, WB
...ALP-conjugated (AS09 458-ALP), Biotin-conjugated (AS09 458B), HRP-conjugated (AS09 458-HRP)		
DyLight®488-conj. (AS09 458-DL488), DyLight®594-conj. (AS09 458-DL594), DyLight®650-conj. (AS09 458-DL650)		
PEPCK PEP carboxykinase	AS07 241	WB
PRK ribulose-5-P-kinase Phosphoribulokinase	AS07 257	WB
...ALP-conjugated (AS07 257-ALP), Biotin-conjugated (AS07 257B), HRP-conjugated (AS07 257-HRP)		
DyLight®488-conj. (AS07 257-DL488), DyLight®594-conj. (AS07 257-DL594), DyLight®650-conj. (AS07 257-DL650)		
RA Rubisco activase	AS22 4868	WB
RAF2 Rubisco accumulation factor 2	AS13 2729	WB
RbcL Rubisco large subunit, form I (chicken)	AS01 017	IL, WB
RbcL Rubisco large subunit, form I (rabbit)	AS03 037	IF, IG, TP, WB
RbcL Rubisco large subunit, form I (affinity purified)	AS03 037A	WB
...ALP-conjugated (AS03 037-ALP), Biotin-conjugated (AS03 037B), HRP-conjugated (AS03 037-HRP)		
DyLight® 488-conj. (AS03 037-DL488), DyLight® 594-conj. (AS03 037-DL594), DyLight® 650-conj. (AS03 037-DL650)		
RbcL II Rubisco large subunit, form II	AS15 2955	IF, WB
RbcS Rubisco small subunit (SSU)	AS07 259	WB
RbcS Ribulose-1,5-bisphosphate carboxylase/oxygenase small subunit (Algal)	AS22 4825	WB
Rubisco 557 kDa hexadecamer	AS07 218	IL, WB
Rubisco ELISA quantitation kit	AS15 2994	WB
SBPase Sedoheptulose-1,7-bis phosphatase	AS15 2873	WB
TKL1 Transketolase (chloroplastic)	AS15 2903	IP, WB
Trxf1/2 Thioredoxin F1/F2 (chloroplastic)	AS14 2808	WB
TrxM1/M2 Thioredoxin M1/M2 (chloroplastic)	AS14 2809	WB

Photosynthesis – Sucrose metabolism

Product name	Product number	Applications
BAM1 Beta amylase 1 (chloroplastic)	AS15 2895	WB
cFBPase Cytosolic fructose-1,6-bisphosphatase	AS04 043	WB
GAPC1/2 Glyceraldehyde-3-phosphate dehydrogenase	AS15 2894	WB
SPS Sucrose phosphate synthase (maize)	AS06 185	IL, WB
SPS Sucrose phosphate synthase, global	AS03 035A	WB
...ALP-conjugated (AS03 035-ALP), Biotin-conjugated (AS03 035B), HRP-conjugated (AS03 035-HRP)		
DyLight®488-conj. (AS03 035-DL488), DyLight®594-conj. (AS03 035-DL594), DyLight®650-conj. (AS03 035-DL650)		
SPSA1 Sucrose phosphate synthase isoform A1	AS15 2995	WB
SPSC Sucrose phosphate synthase isoform C	AS15 2997	WB
SUS1 Sucrose synthase 1	AS15 2830	WB
UAGPase UDP-GlcNAc pyrophosphorylase	AS14 2829	WB
UGPase UDP-glucose pyrophosphorylase (cytoplasm marker)	AS14 2813	WB
UGPase UDP-glucose pyrophosphorylase (cytoplasm marker) (<i>Hordeum vulgare</i>)	AS14 2813	WB

Plant pathogens – Fungi

Product name	Product number	Applications
Ergotamine, Total IgG (0.2 mg)	AS11 1650	ELISA
SOBIR1 Suppressor of BIR1 (chicken antibody)	AS16 3959	IP, WB
SOBIR1 Suppressor of BIR1 (rabbit antibody)	AS16 3204	IP, WB

Plant pathogens – Viruses

Product name	Product number	Applications
2b protein [Cucumber mosaic virus]	AS16 3981	WB
2b protein [Tomato aspermy virus]	AS16 3982	WB
p15 [Peanut clump virus]	AS16 3983	WB
TSWV Tomato Spotted Wilt Virus (Glycoprotein G1)	AS16 3137-1ml	ELISA, IHC, WB
TSWV Tomato Spotted Wilt Virus (Glycoprotein G2)	AS16 3138-1ml	ELISA, IHC, WB
TYLCV C1 Tomato yellow leaf curl virus coat protein C1	AS15 3055	IF
TYLCV C2 Tomato yellow leaf curl virus coat protein C2	AS15 3056	IF
TYLCV C3 Tomato yellow leaf curl virus coat protein C3	AS15 3057	IF
TYLCV C4 Tomato yellow leaf curl virus coat protein C4	AS15 3058	IF

Protein modifications

Product name	Product number	Applications
P-Tyr Phosphotyrosine	AS10 705	IF, IHC, IP, WB
RD N-terminal arginylation (affinity purified)	AS15 3050A	Dot
RE N-terminal arginylation	AS15 3050	Dot

Protein modifications Autophagy-related and ubiquitin-like proteins

Product name	Product number	Applications
ATG1a Serine/threonine-protein kinase ATG1a	AS19 4274	WB
ATG3 Autophagy-related protein 3	AS19 4275	WB
ATG5 Autophagy protein 5	AS19 4276	WB
ATG7 Autophagy-related protein 7	AS19 4277	WB
ATG12b Autophagy-related protein 12b	AS19 4278	WB
ATG13a Autophagy-related protein 13a	AS19 4279	WB
ATG16 Autophagy-related protein 16	AS19 4280	WB
NBR1 Protein NBR1 homolog	AS19 4281	WB
SAE1a SUMO-activating enzyme subunit 1A	AS19 4284	WB
SCE1 SUMO-conjugating enzyme SCE1	AS19 4285	WB
SUMO3 Small ubiquitin-like modifier protein 3 (protein antibody)	AS19 4283	WB
UBQ11 Ubiquitin	AS08 307	WB
UBQ11 Ubiquitin (affinity purified)	AS08 307A	WB

Protein modifications – Plant proteasome

Product name	Product number	Applications
PA200 Proteasome activator PA200	AS19 4269	WB
PAC1 20S Proteasome alpha subunit C1	AS19 4258	WB
PAG1 20S Proteasome alpha subunit G1	AS19 4259	WB
PBA1 20S Proteasome beta subunit A1	AS19 4260	WB
PBF1 20S proteasome beta subunit F-1	AS19 4261	WB
Phosphotyrosine Purified (mouse monoclonal) (clone P-Tyr-01)	AS21 4618	Flowcyt, ICC, WB
RAD23b Rad23 UV excision repair protein family	AS19 4270	WB
RAD23c Ubiquitin receptor RAD23c	AS19 4271	WB
RPN1a 26S proteasome regulatory subunit RPN1a	AS19 4264	WB
RPN5a 26S proteasome regulatory subunit, putative (RPN5)	AS19 4265	WB
RPN10 26S proteasome regulatory subunit RPN10	AS19 4266	WB
RPN11 26S proteasome regulatory subunit RPN11	AS19 4267	WB
RPN12a 26S proteasome regulatory subunit RPN12a	AS19 4268	WB
RPT2a Regulatory particle triple-A ATPase subunit 2a	AS19 4262	WB
RPT4a 26S proteasome AAA-ATPase subunit RPT4a	AS19 4263	WB

Toxins – Mycotoxins

Product name	Product number	Applications
Aflatoxin M1, Total IgG (goat antibody, 0.5 mg)	AS15 2827	ELISA
Aflatoxin M1, Total IgG (rabbit antibody, 0.5 mg)	AS15 2828	ELISA
Bisphenol A (rabbit polyclonal)	AS16 4029	ELISA
DON Deoxynivalenol, Serum (0.1 ml)	AS11 1654	ELISA

Toxins – Plant toxins/Other compounds

Product name	Product number	Applications
Acrylamid Prop-2-enamide	AS13 2732	IAC
Atrazine 2-chloro-4-(ethylamino)-6-(isopropylamino)-s-triazine	AS13 2734	ELISA, IAC
BoNT-A Botulinum toxin A	AS16 4086	ELISA
BoNT-A Botulinum Neurotoxin A (Heavy Chain Binding Domain)(Biotin conjugated)	AS24 5040	ELISA, WB
BoNT-A Botulinum Neurotoxin A (Heavy Chain Binding Domain) (HRP conjugated)	AS24 5043	ELISA, WB
BoNT-B Botulinum toxin B	AS16 4087	ELISA
BoNT-B Botulinum Neurotoxin B (chicken antibody)	AS20 4467	ELISA, WB
BoNT-B Botulinum Neurotoxin B, FITC-conjugated (chicken antibody)	AS20 4468	IHC
BoNT-E Botulinum toxin E	AS16 4088	ELISA
BoNT-E Botulinum neurotoxin E, light chain	AS21 4698	ELISA, WB
BoNT-E Botulinum neurotoxin E, light chain (Biotin conjugated)	AS21 4699	ELISA, WB
BoNT-E Botulinum neurotoxin E, light chain (HRP conjugated)	AS21 4700	ELISA, WB
Glyphosate	AS13 2739	ELISA, IAC
RTA Ricin toxic A chain	AS17 4143	ELISA
RTB Ricin toxic B chain	AS17 4144	ELISA



Customer testimonials: www.agrisera.com/en/customer-testimonials

Detection reagents – Chromogenic detection

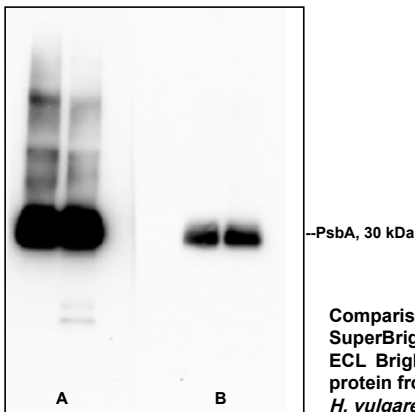
Product name.....	Product number	Applications
Agrisera BCIP/NBT ALP Substrate (100 ml).....	AS19 BCIP-NBT	WB
Agrisera BCIP/NBT Plus ALP Substrate (100 ml).....	AS19 BCIP-NBT-PLUS	WB

Detection reagents – ECL

Product name.....	Product number	Applications
Agrisera ECL kit (Bright/SuperBright) (10 ml).....	AS16 ECL-S-N-10	WB
AgriseraECL Bright (10 ml).....	AS16 ECL-N-10	WB
AgriseraECL SuperBright (10 ml).....	AS16 ECL-S-10	WB

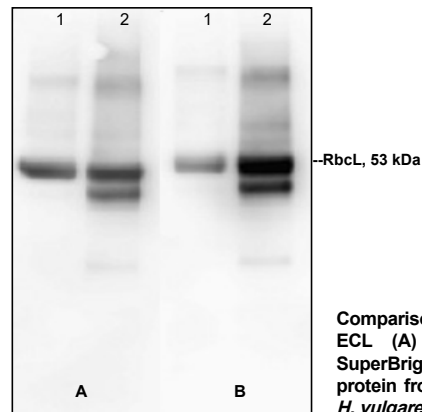
Application examples

Product #:AS16 ECL-S & AS16 ECL-N
Extreme low femtogram & mid-picogram detection range



Comparison of Agrisera ECL SuperBright (A) and Agrisera ECL Bright (B). 10 µg of total protein from *A. thaliana* leaf (1), *H. vulgare* leaf (2).

Product #:AS16 ECL-S
Extreme low femtogram detection range



Comparison of Competitor's ECL (A) and Agrisera ECL SuperBright (B). 10 µg of total protein from *A. thaliana* leaf (1), *H. vulgare* leaf (2).

Detection reagents – ELISA

Product name.....	Product number	Applications
Agrisera HRP-Conjugate/Protein Stabilizer (10 ml or 100 ml).....	AS15 HRPstab	ELISA
AgriseraTMB Diluent (100 ml).....	AS15 Diluent	ELISA
AgriseraTMB HRP Substrate (10 ml, 100 ml or 1 L).....	AS15 TMB-HRP	ELISA
Streptavidin HRP Conjugated, for ELISA.....	AS15 2860	ELISA

Bacterial and Fungal antibodies

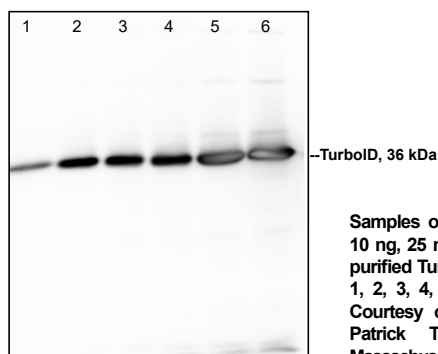
Product name.....	Product number	Applications
3-Phosphoglyceric phosphokinase, biotin conjugated, <i>Saccharomyces cerevisiae</i> ...	AS21 4646 ..	Dot,ELISA,i-IF,WB
3-Phosphoglyceric phosphokinase, <i>Saccharomyces cerevisiae</i>	AS21 4645 ..	Dot,ELISA,i-IF,WB
ADH/ALDH Alcohol/acetaldehyde dehydrogenase, bacterial/algal.....	AS10 748	WB
ADK Adenylate kinase.....	AS16 3155	WB
Alcohol dehydrogenase, <i>Saccharomyces cerevisiae</i>	AS21 4670 ..	Dot,ELISA,i-IF,WB
Aldehyde dehydrogenase, biotin conjugated, <i>Saccharomyces cerevisiae</i>	AS21 4668	Dot, ELISA, WB
Aldehyde dehydrogenase, <i>Saccharomyces cerevisiae</i>	AS21 4667 ..	Dot,ELISA,i-IF,WB
Alkaline phosphatase, biotin conjugated, <i>Escherichia coli</i>	AS21 4649 ..	Dot,ELISA,i-IF,WB
Alkaline phosphatase, <i>Escherichia coli</i>	AS21 4648 ..	Dot,ELISA,i-IF,WB
ATPase AAA2 domain.....	AS11 1754	WB
AtpB Beta subunit of ATP synthase, chloroplastic + mitoch (rabbit antibody)...	AS05 085 ..	BN-PAGE,IF,U-ExM,WB
beta-1,4-glucosidase (hyperthermophilic enzyme).....	AS15 3093	WB
Beta-Galactosidase (mouse monoclonal) (clone BG-02).....	AS21 4616	ICC, WB
Beta-Galactosidase, biotin conjugated, <i>Escherichia coli</i>	AS21 4660	Dot, ELISA, WB
Beta-Galactosidase, <i>Escherichia coli</i>	AS21 4659 ..	Dot,ELISA,i-IF,WB
Beta Tubulin (<i>Schizosaccharomyces pombe</i>).....	AS21 4556	ELISA, IF, WB
CBP CREB-binding protein homolog.....	AS13 2730	WB
Choline kinase, biotin conjugated, <i>Saccharomyces cerevisiae</i>	AS21 4665	Dot, ELISA, WB
Choline kinase, <i>Saccharomyces cerevisiae</i>	AS21 4664 ..	Dot,ELISA,i-IF,WB
CpxA Conjugative plasmid expression.....	AS13 2653	WB
CsoS1A/B/C Major carboxysome shell protein 1A, AB, 1C.....	AS14 2760	WB
DNA Photolyase (E.coli).....	AS21 4548	ELISA, IP, WB
DnaJ (<i>Yersinia pseudotuberculosis</i>).....	AS15 3072	WB
DnaK.....	AS15 3073	WB
Endo-beta-1,4 xylanase (hyperthermophilic enzyme).....	AS15 3087	WB
ExoS Exoenzyme S.....	AS05 056	WB
Fe-hydrogenase beta subunit (hyperthermophilic enzyme).....	AS15 3086	WB
Ferredoxin, apicoplast (<i>Plasmodium falciparum</i>).....	AS20 4429	ELISA, IF, WB
FnCel5A Endo-beta-1,4 glucanase (hyperthermophilic enzyme).....	AS15 3094	WB
FNR Ferredoxin NADP Reductase (<i>Plasmodium falciparum</i>).....	AS20 4435	ELISA, WB
Formate dehydrogenase, biotin conjugated, <i>Saccharomyces</i>	AS21 4663 ..	Dot,ELISA,ICC,IHC,WB
Formate dehydrogenase, <i>Saccharomyces</i>	AS21 4662 ..	Dot,ELISA,i-IF,WB
<i>Francisella tularensis</i>	AS16 4035	WB
FtsZ Procaryotic cell division GTPase.....	AS10 715	IF, WB
Glucuronate kinase, biotin conjugate, <i>Escherichia coli</i>	AS21 4642 ..	Dot,ELISA,i-IF,WB
Glucuronate kinase, <i>Escherichia coli</i>	AS21 4641 ..	Dot,ELISA,i-IF,WB
Glucose oxidase.....	AS20 4477	IP
Glutathion reductase, biotin conjugated, <i>Saccharomyces cerevisiae</i>	AS21 4657	Dot, ELISA, WB
Glutathion reductase, <i>Saccharomyces cerevisiae</i>	AS21 4656 ..	Dot,ELISA,i-IF,WB
Glyceraldehyde-3-phosphate dehydrogenase, <i>Saccharomyces cerevisiae</i>	AS21 4653 ..	Dot,ELISA,i-IF,WB
GTA MCP Gene Transfer Agent (GTA) major capsid protein (MCP).....	AS08 365	WB
HDEL Endoplasmic reticulum retention signal.....	AS10 683	IF, IG, WB
Hexokinase, biotin conjugated, <i>Saccharomyces cerevisiae</i>	AS21 4652	Dot, ELISA, WB
Hexokinase, <i>Saccharomyces cerevisiae</i>	AS21 4651 ..	Dot,ELISA,i-IF,WB
KatG Catalase peroxidase (HPI), cyanobacterial.....	AS08 374	WB
KDEL Endoplasmic reticulum retention signal.....	AS13 2665	IHC, WB
LacI Lactose operon repressor (clone 15C11).....	AS16 3144	WB
LexA LexA repressor.....	AS21 4541	ChIP. IL, WB
LexA LexA repressor (protein, positive control).....	AS21 4541P	WB
Luciferase, biotin conjugated, <i>Photobacterium fischeri</i>	AS21 4630 ..	Dot,ELISA,i-IF,WB
Luciferase, <i>Photobacterium fischeri</i>	AS21 4629 ..	Dot,ELISA,i-IF,WB
Methylated Lysine.....	AS15 3021 ..	ELISA, IHC, IP, WB
NADH-FMN Oxidoreductase, <i>Photobacterium fischeri</i>	AS21 4631 ..	Dot,ELISA,i-IF,WB
NpHR halorhodopsin.....	AS12 1851	IF, WB
Nuclease, biotin conjugated <i>Staphylococcus aureus</i>	AS21 4633 ..	Dot,ELISA,i-IF,WB
Nuclease, <i>Staphylococcus aureus</i>	AS21 4632 ..	Dot,ELISA,i-IF,WB
PCNA Proliferating cell nuclear antigen (<i>Saccharomyces cerevisiae</i>).....	AS21 4552	ChIP, IP, WB
PEPC Phosphoenolpyruvate carboxylase.....	AS09 458	IL, WB
...ALP-conjugated (AS09 458-ALP), Biotin-conjugated (AS09 458B), HRP-conjugated (AS09 458-HRP).....		
DyLight®488-conj. (AS09 458-DL488), DyLight®594-conj. (AS09 458-DL594), DyLight®650-conj. (AS09 458-DL650)		

Bacterial and Fungal antibodies

Product name.....	Product number	Applications
Peptostreptococcal Protein L.....	AS20 4473	ELISA, WB
Peptostreptococcal Protein L, FITC-conjugated.....	AS20 4474	IHC
Peptostreptococcal Protein L, HRP-conjugated.....	AS20 4475	ELISA, WB
Phosphoglucose isomerase, biotin conjugated, <i>Saccharomyces cerevisiae</i>	AS21 4644 ..	Dot,ELISA,i-IF,WB
Phosphoglucose isomerase, <i>Saccharomyces cerevisiae</i>	AS21 4643 ..	Dot,ELISA,i-IF,WB
POL I DNA Polymerase 1.....	AS21 4547	IP, WB
PS Phytochelatin Synthase.....	AS20 4489	ELISA, IF, WB
Rad22 DNA repair and recombination protein rad22 (<i>Saccharomyces pombe</i>).....	AS21 4554 ..	ELISA, IF, IP, WB
RAD51 DNA repair protein RAD51 (<i>Saccharomyces cerevisiae</i>) (ChIP grade).....	AS21 4549 ..	ELISA,ChIP,IF,IP,WB
RecA Recombinase A.....	AS21 4542 ..	ELISA, IF, IP, WB
RecA (protein, positive control).....	AS21 4542P	WB
RFA Baker's yeast replication factor A.....	AS07 214	ChIP, IP, WB
Rfa1 Replication factor protein 1 (<i>Saccharomyces cerevisiae</i>).....	AS21 4550	IP, WB
Rfa3/Rpa3 Replication factor A protein 3 (<i>Saccharomyces cerevisiae</i>).....	AS21 4551	WB
Rhp51 DNA repair protein rhp51 (<i>Saccharomyces pombe</i>).....	AS21 4553 ...	ChIP, IF, IP, WB
Ribonucleic acid polymerase, Escherichia coli.....	AS21 4634 ..	Dot, ELISA, i-IF, WB
Rnr1 Ribonucleoside-diphosphate reductase large subunit.....	AS16 3639	WB
Rnr3 Ribonucleoside-diphosphate reductase large chain 2.....	AS09 574	WB
RPS12 Ribosomal protein S12 (chloroplastic).....	AS12 2114	WB
RPS14 40S ribosomal protein S14-1.....	AS12 2111	WB
RPSA 30S ribosomal protein S1.....	AS19 4305	ELISA
RuvA Holliday junction ATP-dependent DNA helicase.....	AS21 4543	ELISA, WB
RuvA (protein, positive control).....	AS21 4543P	WB
RuvB Holliday junction ATP-dependent DNA helicase RuvB.....	AS21 4544	WB
RuvB (protein, positive control).....	AS21 4544P	WB
RuvC Holliday junction nuclease RuvC.....	AS21 4545	WB
RuvC (protein, positive control).....	AS21 4545P	WB
Sml1 Suppressor of Mec1 lethality.....	AS10 847	WB
Staphylococcal Protein A, agarose-conjugated.....	AS20 4470	IAC
Staphylococcal Protein A, FITC-conjugated.....	AS20 4471	IHC
Streptococcal Protein G, FITC-conjugated.....	AS20 4472	IHC
UmuD Protein UmuD.....	AS21 4546	WB

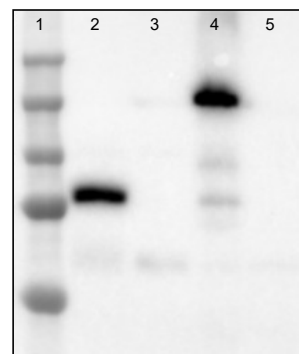
Application examples

Anti-TurboID
Product #:AS20 4440



Samples on the blot: 1 ng, 5 ng, 10 ng, 25 ng, 50 ng, and 75 ng of purified TurboID, loaded into wells 1, 2, 3, 4, 5, and 6, respectively. Courtesy of Eli Gordon and Dr. Patrick Treffon, University of Massachusetts Amherst, USA.

Anti-mNeonGreen
Product #:AS21 4525



Samples on the blot: Precision Plus Protein Standards (Bio-Rad) (1), *A. thaliana* expressing mNeonGreen-tagged fusion protein (2), *A. thaliana* wild type total cell extract (3), *C. reinhardtii* expressing mNeonGreen-tagged fusion protein (4), *C. reinhardtii* wild type cell extract (5). Molecular weight depends on used fusion partner. Courtesy of Hanie Khorshidi, University of Saskatchewan, Canada.

Epitope tag antibodies

Product name	Product number	Applications
6x Histidine, ALP Conjugated	AS15 2935	WB
6x Histidine, Biotin Conjugated	AS15 2934	WB
6x Histidine, conjugated to DyLight® 488	AS15 2928	HTS
6x Histidine, conjugated to DyLight® 550	AS15 2929	IL
6x Histidine, conjugated to DyLight® 650	AS15 2933	HTS, IF, IHC, WB
6x Histidine, conjugated to Europium	AS15 2932	HTS
6x Histidine, conjugated to SureLight® R-Phycoerythrin	AS15 2931	CBA, Flow cyt, MA
6x Histidine, HRP conjugated	AS15 2930	WB
6x Histidine, Unconjugated (1 mg)	AS15 2936	CBA, Flow cyt, MA
aadA1 Aminoglycoside adenyltransferase (chloroplast transformation marker)	AS09 580	WB
...ALP-conjugated (AS09 580-ALP), Biotin-conjugated (AS09 580B), HRP-conjugated (AS09 580-HRP)		
AtpA Alpha subunit of ATP synthase, chloroplastic (algal)	AS21 4674	WB
BAR Phosphinothricin N-acetyltransferase (36-50)	AS21 4613	WB
BAR Phosphinothricin N-acetyltransferase (170-183)	AS21 4612	WB
BC2-tag	AS20 4446	WB
...ALP-conjugated (AS20 4446-ALP), Biotin-conjugated (AS20 4446B), HRP-conjugated (AS20 4446-HRP)		
DyLight®488-conj. (AS20 4446-DL488), DyLight®594-conj. (AS20 4446-DL594), DyLight®650-conj. (AS20 4446-DL650)		
BFP, GFP, YFP Fluorescence Protein, clone 3A6	AS20 4485	ELISA, WB
Ble tag Bleomycin resistance protein	AS22 4832	WB
Blue Fluorescent Protein BFP , clone 7F10	AS20 4486	ELISA
BirA (mutated/TurboID)	AS20 4440	WB
...ALP-conjugated (AS20 4440-ALP), Biotin-conjugated (AS20 4440B), HRP-conjugated (AS20 4440-HRP)		
DyLight®488-conj. (AS20 4440-DL488), DyLight®594-conj. (AS20 4440-DL594), DyLight®650-conj. (AS20 4440-DL650)		
c-myc tag (mouse monoclonal) (clone 9E10)	AS21 4620	ELISA, IF, WB
c-myc, ALP conjugated	AS15 2940	WB
c-myc, Biotin conjugated (mouse monoclonal) (clone 9E10)	AS21 4625	IP, IHC, Flowcyt, WB
c-myc, DyLight® 488 conjugated	AS15 2945	HTS
c-myc, DyLight® 550 conjugated	AS15 2946	IL, WB
c-myc, DyLight® 650 conjugated	AS15 2942	HTS
c-myc, Europium conjugated	AS15 2943	HTS
c-myc, FITC conjugated (clone 9E10)	AS21 4627	Flowcyt
c-myc, HRP conjugated (clone 9E10)	AS21 4628	WB
c-myc, SureLight® R-Phycoerythrin conjugated	AS15 2944	CBA, Flow cyt
C-YFP C-terminal of YFP	AS11 1775	WB
...ALP-conjugated (AS11 1775-ALP), Biotin-conjugated (AS11 1775B), HRP-conjugated (AS11 1775-HRP)		
DyLight®488-conj. (AS11 1775-DL488), DyLight®594-conj. (AS11 1775-DL594), DyLight®650-conj. (AS11 1775-DL650)		
Cas9 CRISPR-associated endonuclease 9 (monoclonal)	AS17 4124	IF, IP, WB
Cas9 CRISPR-associated endonuclease 9 (polyclonal)	AS16 3690	IL, WB
...ALP-conjugated (AS16 3690-ALP), Biotin-conjugated (AS16 3690B), HRP-conjugated (AS16 3690-HRP)		
DyLight®488-conj. (AS16 3690-DL488), DyLight®594-conj. (AS16 3690-DL594), DyLight®650-conj. (AS16 3690-DL650)		
CBP	AS21 4686	ELISA, WB
CFP Cyan Fluorescence Protein (monoclonal)	AS15 3038	Dot, IHC, WB
Dendra2 tag	AS21 4623	ICC, FlowCyt, WB
DYKDDDDK (binds to Sigma FLAG®)	AS15 2871	Dot, IHC, IP, WB
DYKDDDDK (binds to Sigma FLAG®) (mouse monoclonal)	AS15 3036	IHC, IP, WB
DYKDDDDK (binds to Sigma FLAG®) (mouse monoclonal) (clone F-tag-01)	AS21 4619	ICC, WB
DYKDDDDK (binds to Sigma FLAG®) (rabbit polyclonal)	AS15 3037	IHC, IP, WB
DYKDDDDK (binds to Sigma FLAG®), ALP-conjugated	AS18 4180	WB
DYKDDDDK (binds to Sigma FLAG®), Biotin-conjugated	AS18 4181	WB
DYKDDDDK (binds to Sigma FLAG®), DyLight® 488 conjugated	AS15 2950	HTS
DYKDDDDK (binds to Sigma FLAG®), DyLight® 550 conjugated	AS15 2951	IL
DYKDDDDK (binds to Sigma FLAG®), DyLight® 650 conjugated	AS15 2947	HTS
DYKDDDDK (binds to Sigma FLAG®), Europium conjugated	AS15 2948	HTS
DYKDDDDK (binds to Sigma FLAG®), FITC-conjugated	AS18 4182	WB
DYKDDDDK (binds to Sigma FLAG®), HRP-conjugated	AS18 4183	WB
DYKDDDDK (binds to Sigma FLAG®), HRP conjugated, (Clone M2)	AS16 3222	WB
DYKDDDDK (binds to Sigma FLAG®), SureLight® R-Phycoerythrin conjugated	AS15 2949	CBA, Flow cyt, MA
EGFP Enhanced Green Fluorescence Protein	AS21 4583	ICC, WB
EGFP, S65T-GFP, RS-GFP, YFP Green Fluorescence Protein and its variants	AS20 4512	IF, IP, WB
FITC fluorescein isothiocyanate (monoclonal)	AS18 4213	ELISA, IF
FITC fluorescein isothiocyanate, Biotin-conjugated (monoclonal)	AS18 4214	ICC, IHC, Dot, WB

Epitope tag antibodies

Product name	Product number	Applications
FITC fluorescein isothiocyanate, HRP-conjugated (monoclonal)	AS18 4215	ICC, IHC, Dot, WB
GAL Beta galactosidase	AS20 4515	ELISA, IF, IP, WB
GFP Green Fluorescence Protein	AS20 4443	ChIP, IF, WB
...ALP-conjugated (AS20 4443-ALP), Biotin-conjugated (AS20 4443B), HRP-conjugated (AS20 4443-HRP)		
DyLight®488-conj. (AS20 4443-DL488), DyLight®594-conj. (AS20 4443-DL594), DyLight®650-conj. (AS20 4443-DL650)		
GFP Green Fluorescence Protein (affinity purified)	AS15 2987	ELISA, IF, WB
GFP Green Fluorescent Protein (monoclonal, clone GF28R)	AS20 4460	Dot, ELISA, IP, IHC, WB
GFP Green Fluorescence Protein, monoclonal (clone 2G4:F2)	AS21 4696	WB
GFP Green Fluorescence Protein (total IgY)	AS15 2998	ELISA, WB
GFP Green Fluorescent protein (VENUS)	AS18 4227	WB
...ALP-conjugated (AS18 4227-ALP), Biotin-conjugated (AS18 4227B), HRP-conjugated (AS18 4227-HRP)		
DyLight®488-conj. (AS18 4227-DL488), DyLight®594-conj. (AS18 4227-DL594), DyLight®650-conj. (AS18 4227-DL650)		
GFP Green Fluorescence Protein, clone 1A5 (rat monoclonal)	AS20 4511	ChIP, ELISA, IF, IP, WB
GFP Green Fluorescence Protein, peroxidase conjugated	AS15 3001	ELISA, IHC, WB
GFP Recombinant GFP protein	AS15 3002	WB
GST conjugated to DyLight® 488	AS15 2915	HTS
GST conjugated to DyLight® 550	AS15 2916	IL
GST conjugated to DyLight® 650	AS15 2912	CBA, FL
GST conjugated to Europium 1024	AS15 2913	HTS
GST conjugated to SureLight® R-Phycoerythrin	AS15 2914	CBA, Flow cyt, MA
GST-tag	AS20 4513	ELISA, IP, WB
GST-tag (mouse monoclonal)	AS21 4677	WB
GST tag (mouse monoclonal) (clone S-tag-05)	AS21 4621	IP, WB
GST-tag (rabbit polyclonal)	AS17 4147	ELISA, WB
...ALP-conjugated (AS17 4147-ALP), Biotin-conjugated (AS17 4147B), HRP-conjugated (AS17 4147-HRP)		
DyLight®488-conj. (AS17 4147-DL488), DyLight®594-conj. (AS17 4147-DL594), DyLight®650-conj. (AS17 4147-DL650)		
GST-tag, Biotin-conjugated (mouse monoclonal)	AS18 4186	ELISA, WB
GST-tag, FITC-conjugated (mouse monoclonal)	AS18 4187	ELISA, WB
GST-tag, HRP-conjugated (mouse monoclonal)	AS18 4188	ELISA, WB
GST-tag clone 21, mouse monoclonal	AS20 4514	IF, IP, WB
GUS Beta-glucuronidase	AS16 3689	WB
HA (chicken antibody)	AS20 4463	ELISA, Flow cyt, WB
HA (monoclonal)	AS18 4176	IP, IL, WB
HA (monoclonal, Clone 12CA5)	AS20 4453	WB
HA, conjugated to Alkaline Phosphatase	AS15 2921	WB
HA, conjugated to Biotin	AS15 2922	WB
HA, conjugated to DyLight® 550	AS15 2920	IL
HA, conjugated to DyLight® 650	AS15 2925	Flow cyt, CBA
HA, conjugated to DyLight®488	AS15 2919	FL, CBA
HA, conjugated to Europium 1024	AS15 2923	HTS
HA, conjugated to HRP	AS15 2924	WB
HA, conjugated to SureLight® R-Phycoerythrin	AS15 2918	CBA, FL, MA, MPI
HA, DyLight® 488 conjugated	AS15 2959	CBA, Flow cyt
HA, DyLight® 550 conjugated	AS15 2960	IL
HA, DyLight® 650 conjugated	AS15 2963	CBA, Flow cyt
HA, FITC-conjugated (chicken antibody)	AS20 4464	ELISA, WB
HA, SureLight® R-Phycoerythrin conjugated	AS15 2958	CBA, Flow cyt, MA
HA-tag	AS12 2220	WB
Halo Tag, derived from DhaA of Rhodococcus rhodochrous	AS21 4605	WB
His-tag 3xHis (polyclonal)	AS20 4441	WB
...ALP-conjugated (AS20 4441-ALP), Biotin-conjugated (AS20 4441B), HRP-conjugated (AS20 4441-HRP)		
DyLight®488-conj. (AS20 4441-DL488), DyLight®594-conj. (AS20 4441-DL594), DyLight®650-conj. (AS20 4441-DL650)		
His-tag 6xHis (clone HIS.H8 / EH158)	AS11 1771	Dot, ELISA, IL, IP, WB
His-tag 6xHis (100 µg, Clone AD1.1.10)	AS15 2937	CBA, FL, MA, MPI
His-tag 6xHis (monoclonal, Clone 2C5.1)	AS20 4457	WB
His-tag 6xHis (polyclonal)	AS19 4255	ELISA, WB
HSV	AS21 4681	ELISA, WB
KT3	AS21 4680	ELISA, WB
LUC Luciferase (firefly) (serum)	AS16 3691	WB

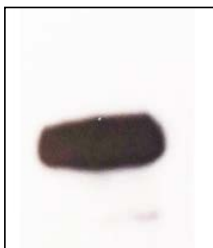
Epitope tag antibodies

Product name	Product number	Applications
LUC Luciferase (firefly) (affinity purified antibodies)	AS16 3691A	WB
...ALP-conjugated (AS16 3691-ALP), Biotin-conjugated (AS16 3691B), HRP-conjugated (AS16 3691-HRP)		
DyLight® 488-conj.(AS16 3691-DL488), DyLight® 594-conj.(AS16 3691-DL594), DyLight® 650-conj.(AS16 3691-DL650)		
LUC Luciferase (firefly), Biotin-conjugated	AS20 4480	ELISA, IF, WB
MBP Maltose Binding Protein (polyclonal)	AS15 3039	ELISA, WB
MBP Maltose Binding Protein (monoclonal)	AS21 4678	ELISA, WB
mCherry (monoclonal)	AS16 3967	ICC, WB
mCherry (chicken antibody)	AS18 4178	ICC, WB
mCherry (rabbit antibody)	AS18 4179	ICC, WB
mStrawberry	AS21 4675	WB
Myc tag (monoclonal)	AS21 4685	ELISA, WB
Myc tag (rabbit antibody, polyclonal)	AS21 4529	IF
N-YFP N-terminal of YFP	AS11 1776	WB
P-Ser Phosphoserine, clone 19D12	AS20 4487	ELISA
RFP Red Fluorescent Protein	AS15 3028	ELISA, Dot IP, WB
RFP Red Fluorescent Protein (mouse monoclonal)	AS15 3033	ELISA, IHC, IP, WB
S	AS21 4684	ELISA, WB
S, ALP conjugated	AS15 2974	WB
S, Biotin conjugated	AS15 2975	WB
S, DyLight® 488 conjugated	AS15 2972	CBA, Flow cyt
S, DyLight® 550 conjugated	AS15 2973	IL
S, DyLight® 650 conjugated	AS15 2970	CBA, Flow cyt
S, SureLight® R-Phycoerythrin conjugated	AS15 2971	CBA, Flow cyt, MA
Strep-tag®II-Tag	AS21 4682	ELISA, WB
T7	AS21 4679	ELISA, WB
T7, ALP conjugated	AS15 2976	WB
T7, Biotin conjugated	AS15 2977	WB
T7, DyLight® 488 conjugated	AS15 2983	CBA, Flow cyt
T7, DyLight® 550 conjugated	AS15 2984	IL
T7, DyLight® 650 conjugated	AS15 2978	CBA, Flow cyt
TAP	AS21 4687	ELISA, WB
TRITC tetramethylrhodamine isothiocyanate (monoclonal)	AS18 4225	ELISA, IIF
TRITC tetramethylrhodamine isothiocyanate, HRP-conjugated (monoclonal)	AS18 4226	ICC, IHC, Dot, WB
Trx Tag Thioredoxin 1 Fusion protein	AS21 4683	ELISA, WB
V5	AS15 3027	Dot, IHC, IP, WB
V5 (mouse antibody, monoclonal)	AS21 4676	IF, IP, WB
V5, DyLight® 550 conjugated	AS15 2967	IL
V5, DyLight® 650 conjugated	AS15 2968	CBA, Flow cyt
V5, ALP conjugated	AS15 2964	WB
V5, DyLight® 488 conjugated	AS15 2966	CBA, Flow cyt
V5, SureLight® R-Phycoerythrin conjugated	AS15 2969	CBA, Flow cyt, MA
YFP Yellow Fluorescent Protein (monoclonal)	AS18 4177	Dot, IP, IL, WB

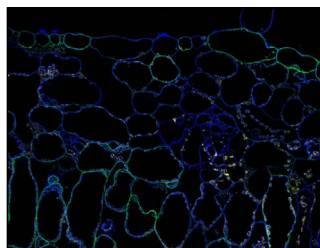
Application examples

Anti-GFP

Product #: [AS20 4443](#)



94 µg/well of total protein extracted freshly from tobacco. Blot was incubated in Agrisera matching secondary antibody (anti-rabbit IgG horse radish peroxidase conjugated, [AS09 602](#)) and developed for 2 min with Agrisera [ECL SuperBright](#). Courtesy of Delfina Gagliardi Instituto de Agrobiotecnología del Litoral (IAL), Argentina



Super-resolution image of immunofluorescent localization of GFP-fused protein in *Nicotiana tabacum* (tobacco) leaf tissue using Agrisera anti-GFP antibodies ([AS20 4443](#)) and donkey anti-rabbit IgG DyLight 650 conjugated secondary antibodies ([AS12 2254](#), Green). Calcofluor White (Blue) and Tissue Autofluorescence (Yellow). Courtesy of Dr. Kirk Czymmek, Donald Danforth Plant Science Centre, USA.

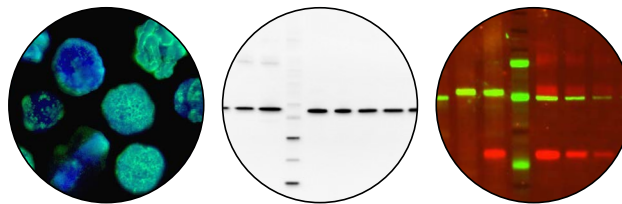
A selection of Agrisera secondary antibodies

Agrisera offers a collection of close to 1000 secondary antibodies, to different species and applications, with a wide range of different conjugations. Presented here is a small selection of the available secondary antibodies.

Anti-Biotin, product name	Product number
Goat anti-Chicken IgY (H&L), ALP conjugated	AS09 606
Goat anti-biotin, HRP conjugated	AS10 1454
Goat anti-biotin, DyLight® 350 conjugated	AS12 2481
Anti-Chicken, product name	Product number
Goat anti-Chicken IgY (H&L), ALP conjugated	AS09 606
Goat anti-Chicken IgY (H&L), DyLight® 594 conjugated	AS11 1823
Goat anti-Chicken IgY (H&L), HRP conjugated	AS09 603
Rabbit anti-Chicken IgY (H&L), HRP conjugated	AS10 1489
Anti-Goat, product name	Product number
Donkey anti-Goat IgG (H&L), HRP conjugated	AS10 1260
Rabbit anti-Goat IgG (H&L), HRP conjugated	AS09 605
Rabbit anti-Goat IgG (H&L), HRP conjugated, highly adsorbed	AS10 659
Anti-Guinea pig, product name	Product number
Goat anti-Guinea pig IgG (H&L), HRP conjugated	AS10 653
Rabbit anti-Guinea pig IgG (H&L), HRP conjugated	AS10 1496
Anti-Llama, product name	Product number
Rabbit anti-Llama IgG (H&L), DyLight® 488 conjugated	AS10 1519
Goat anti-Llama IgG (H&L), FITC conjugated	AS10 1419
Goat anti-Llama IgG (H&L), HRP conjugated	AS10 1420
Rabbit anti-Llama IgG (H&L), HRP conjugated	AS10 1517
Goat anti-Llama IgG (H&L), Affinity purified, Unconjugated	AS10 1416
Anti-Mouse, product name	Product number
Rabbit anti-Mouse IgG (H&L), ALP conjugated	AS09 629
Rabbit anti-Mouse IgG (H&L), ALP conjugated, highly adsorbed	AS10 1274
Goat anti-Mouse IgG (H&L), FITC conjugated	AS10 1223
Chicken anti-Mouse IgG (H&L), HRP conjugated	AS10 1033
Goat anti-Mouse IgM (H&L), HRP conjugated	AS16 3497
Goat anti-Mouse IgG (H&L), HRP conjugated	AS11 1772
Goat anti-Mouse IgG (H&L), HRP conjugated, highly adsorbed	AS10 1427
Rabbit anti-Mouse IgG (H&L), HRP conjugated	AS09 627
Goat anti-Mouse IgG (H&L), Affinity purified, Unconjugated	AS10 811
Anti-Rabbit, product name	Product number
Chicken anti-Rabbit IgG (H&L), ALP conjugated	AS10 829
Goat anti-Rabbit IgG (H&L), ALP conjugated	AS09 607
Chicken anti-Rabbit IgG (H&L), HRP conjugated	AS10 833
Donkey anti-Rabbit IgG (H&L), HRP conjugated	AS10 845
Goat anti-Rabbit IgG (H&L), HRP conjugated	AS09 602
Goat anti-Rabbit IgG (H&L), HRP conjugated, highly adsorbed	AS10 668
Goat anti-Rabbit IgG (H&L), DyLight® 488 conjugated	AS09 633
Goat anti-Rabbit IgG (H&L), DyLight® 488 conjugated, highly adsorbed	AS10 1216
Goat anti-Rabbit IgG (H&L), DyLight® 594 conjugated	AS11 1815
Goat anti-Rabbit IgG (H&L), DyLight® 594 conjugated highly adsorbed	AS12 2081
Goat anti-Rabbit IgG (H&L), DyLight® 800 conjugated	AS12 2456
Goat anti-Rabbit IgG (H&L), DyLight® 800 conjugated, highly adsorbed	AS12 2460
Goat anti-Rabbit IgG (H&L), FITC conjugated	AS10 1176
Goat anti-Rabbit IgG (H&L), FITC conjugated, highly adsorbed	AS10 1121
Goat anti-Rabbit IgG (H&L), TRITC conjugated	AS10 1196
Anti-Rat, product name	Product number
Goat anti-Rat IgG (H&L), DyLight® 488 conjugated	AS09 638
Chicken anti-Rat IgG (H&L), HRP conjugated	AS10 1224
Goat anti-Rat IgG (H&L), HRP conjugated	AS10 1187
Rabbit anti-Rat IgG (H&L), HRP conjugated	AS10 1524
Anti-Sheep, product name	Product number
Donkey anti-Sheep IgG (H&L), HRP conjugated	AS09 604
Donkey anti-Sheep IgG (H&L), HRP conjugated, highly adsorbed	AS10 1160
Donkey anti-Sheep IgG (H&L), Affinity purified, Unconjugated	AS10 1000

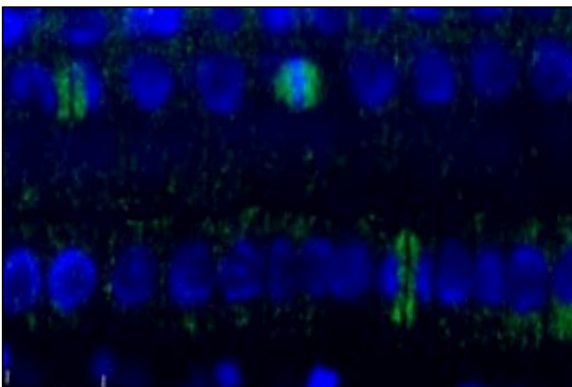
Blocking/control

Product name.....	Product number
Chicken Ig fraction (10 mg).....	AS10 863
Donkey normal serum (10 ml).....	AS10 1564
Goat normal serum (10 ml).....	AS10 1548
Goat Ig fraction.....	AS10 874
Goat purified IgG (10 mg).....	AS10 875
Guinea pig Ig fraction.....	AS10 870
Horse Ig fraction.....	AS10 866
Horse normal serum (10 ml).....	AS10 1562
Llama Ig Fraction.....	AS15 2842
Llama IgG Purified.....	AS15 2844
Mouse Ig fraction.....	AS10 911
Mouse normal serum (5 ml).....	AS10 1544
Rabbit Ig fraction.....	AS10 915
Rabbit normal serum (10 ml).....	AS10 1546
Rabbit purified IgG (10 mg).....	AS10 916
Rat IgG, Purified (100 mg).....	AS16 3682
Rat normal serum (5 ml).....	AS10 1552
Sheep Ig fraction.....	AS10 927
Sheep normal serum (10 ml).....	AS10 1550



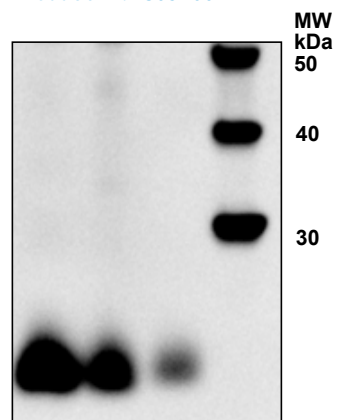
Application example

Goat anti-Rabbit IgG DyLight® 488-conjugated
Product #:AS10 1216



Tubulin beta localization in *A. thaliana* epidermis cells using Agrisera secondary antibody Goat anti-Rabbit IgG (H&L), DyLight® 488 conjugated pre-adsorbed (AS10 1216) combined with Agrisera primary anti-Tubulin (AS10 681) antibody, visualized in green.

Goat anti-Rabbit IgG HRP-conjugated
Product #:AS09 602



WB using Agrisera secondary antibody Goat anti-rabbit, HRP-conjugated (AS09 602), combined with Agrisera primary PsuC antibody (AS04 042) on total extract from (1) *H. vulgare* total leaf, (2) *Z. mays* and (3) *S. oleracea*.

Product validation

Agrisera antibodies are tested by at least two independent laboratories before being made available. For information about the current state of validation, or to obtain a test sample, please contact us at support@agrisera.com.

Product information

For the latest information and pricing of Agrisera products, please visit our website www.agrisera.com or contact us at orders@agrisera.com.

Appendix – applications

Application name.....	Abbreviation
Antibody Column.....	AC
Blue Native PAGE.....	BN-PAGE
Cell Based Assays.....	CBA
Chromogenic Immunohistochemistry.....	CIH
Clear-native PAGE.....	CN-PAGE
Co-ImmunoPrecipitation.....	Co-IP
Colloidal gold test strip.....	Rapid
Dot blot.....	Dot
Enzyme-Linked Immunosorbent Assay.....	ELISA
Flow cytometry.....	Flowcyt
Fluorescence Polarization.....	FPIA
ImmunoAffinity Chromatography.....	IAC
ImmunoAssay.....	IA
ImmunoCytoChemistry.....	ICC
ImmunoDifusion.....	ID
ImmunoFluorescence.....	IF
ImmunoGold.....	IG
ImmunoHistoChemistry.....	IHC
ImmunoLocalization.....	IL
ImmunoPrecipitation.....	IP
Immunosensor Detection.....	ID
Immuno-spin Trapping.....	IT
Indirect ELISA.....	i-ELISA
Indirekt ImmunoFluorescence.....	i-IF
MicroArrays.....	MA
Lateral Flow.....	LF
MicroPlate applications.....	MPI
Neutralization Assay.....	NeA
RadioImmunoAssay.....	RIA
RNA ImmunoPrecipitation.....	RIP
Surface Plasmon Resonance.....	SPR
Tissue Printing.....	TP
Ultrastructure Expansion Microscopy.....	U-ExM
Western Blot.....	WB

Appendix – conjugations

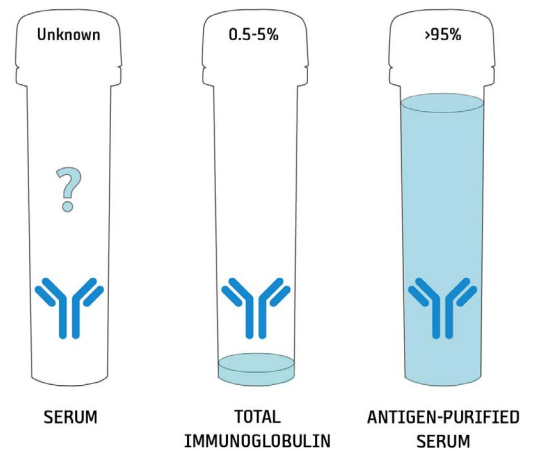
Conjugation.....	Abbreviation
Alkaline phosphatase conjugate.....	ALP
Biotin conjugate.....	B
Fluorescent conjugates for western blot and immunolocalization studies.....	DyLight®
Fluorescein-5-isothiocyanate conjugate.....	FITC
Horseradish peroxidase conjugate.....	HRP
Tetramethylrhodamine conjugate.....	TRITC

Specific antibody amount

How much of the antigen-specific antibody is there in serum?

The answer is that it varies between antibody productions, and that in serum, the specific antibody amount is not determined. When serum is subjected to affinity purification on Protein A or G, it yields a total immunoglobulin fraction, with the specific antibody constituting 0.5-5% of the total antibody pool.

Most antigen-specific antibodies are purified in a process called antigen affinity purification, where serum is passed through a column with antigen (protein or peptide) coupled to beads. Such an antibody format can be used in a broader range of techniques, and is the most suitable format for immunolocalization, immunoprecipitation and ChIP. The amount of specific antibody/tube will be the highest in antigen-purified serum antibody format, at >95%.



How to cite antibodies

As more than half of the antibodies used in research cannot be properly identified, it is absolutely crucial to start including information in the documentation of scientific research, to allow antibody identification by researchers who want to repeat your experiments.

If there are no recommendations from the journal where you intend to publish your work, citing an antibody can be done in the following way:

Antibody name, product number, (supplier name, country)

For example: **Anti-RbcL, AS03 037 (Agrisera, Sweden)**

Additional resources



Customer testimonials: www.agrisera.com/en/customer-testimonials



Agrisera antibodies publication record: www.agrisera.com/publication-record



Search antibody by species: www.agrisera.com/search-by-species

Suggest a new antibody and be the first to use it!

Contact support@agrisera.com with your suggestion!

Contact Agrisera

Ordering and shipping: orders@agrisera.com

Technical support: support@agrisera.com

Phone: +46 935 33 000

www.agrisera.com

Distributors of Agrisera

Agrisera has distributors all over the world.

Argentina | Australia | Austria | Balkans | Canada | Chile | China
Czech Republic | France | Germany | Greece | India | Israel | Italy
Japan | Korea | Malaysia | Mexico | Morocco | New Zealand
Nigeria | Portugal | Serbia | Singapore | South Africa | Spain
Switzerland | Taiwan | Turkey | UK/Ireland | United States

